



Skaneateles Lake Association

2023 **SPECIAL
REPORT**

PROTECTING + PRESERVING
SKANEATELES LAKE



Skaneateles Lake IS YOUR LAKE

Whether you live on it, play in it, look at it or drink from it, Skaneateles Lake is your lake. And you can help keep it pristine. There is only one organization solely dedicated to keeping Skaneateles Lake clear and pure. The Skaneateles Lake Association.

Our mission is to promote the protection of the water quality of Skaneateles Lake and environmentally sound regional management of its watershed. We offer unique programs, projects, approaches and collaborations that help make that a reality.

TABLE OF CONTENTS

Message from Our Board of Directors	4-5
Advisory Council and Science Advisors	6-7
Lake Ecology Team	8-9
SLA Overview, Initiatives, and Funding Sources	10-13
Legacy Fund Programs & Expenditures First 5 Years	14-15
Legacy Fund Lake Protection Plan & Costs Next 5 Years	16-17
Legacy Fund Financial Supporters	18-23
Research and Education Boat and Financial Supporters	24-25
Membership Fund Programs	26-27
SLA Members	28-37
SLA 2022 Financial Summary	38
Closing	39-41

Your support for the SLA Membership
Fund and Legacy Fund makes
programs & projects possible that keep
Skaneateles Lake *clear and pure*.



A Message from OUR BOARD

Dear SLA Supporters,

Thank you for all you do for Skaneateles Lake.

We are pleased to share this Special Report detailing continuing efforts to protect and preserve Skaneateles Lake. The threats to our clear and pure lake have grown substantially, but progress to address them has grown exponentially.

We are more encouraged than ever about the future of the lake and its watershed communities. The annually renewed support received for both the SLA Membership Fund and the SLA Legacy Fund is what makes this progress possible.

Skaneateles Lake is seen by many as a crystal-clear pristine jewel among the Finger Lakes. Recognized as one of the clearest and purest lakes in the nation, it is one of only a small handful of water bodies in the U.S. that is so clear that it provides **unfiltered drinking water** to over 200,000 people in the City of Syracuse and other surrounding communities. But the pristine status of our lake is under siege as never before with an unprecedented myriad of threats compromising the water quality of the lake, including:

- HABs (Harmful Algal Blooms) from increasing storm runoff and nutrient pollution
- HABs from increasing lake water temperatures
- HABs from invasive Hemlock Woolly Adelgid infestation killing the vital hemlock forests in the watershed causing soil erosion and increasing tributary water temperatures
- HABs from both agricultural and residential nutrient loading
- HABs intensified by invasive species such as zebra & quagga mussels, Eurasian watermilfoil, and others



Skaneateles Lake provides **unfiltered** drinking water to over **200,000 people** in the City of Syracuse and surrounding communities.



Please continue renewing your annual dues/donations to the **SLA Membership Fund** which has provided most of the support for fighting invasive species through the Milfoil Control Project since 2007, and Watercraft Stewardship/Inspection at the boat launches since 2012.

In addition, give generously to the **SLA Legacy Fund** (est. 2018) which has become so essential to sponsoring science-driven decision making, community outreach/education, and improving our watershed infrastructure in combating Harmful Algal Blooms.

Protecting Skaneateles Lake for the long term will require watershed-wide collaboration and a personal commitment from everyone who loves the lake. We know our community and the entire Central NY region is ready and willing to face this challenge. Your Skaneateles Lake Association is poised to help lead the way with your continued strong support. Thank you again for your continued commitment to Skaneateles Lake!

Sincerely,

The SLA Board of Directors

Paul F. Torrisi, MD
President
Co-Chair Legacy Fund

Buzz Roberts, MD
Vice President
Co-Chair Lake Ecology Team

Richard D. Hole, Esq.
Treasurer
Chair Finance Committee
Chair Inter-Municipal Relations

David Allyn

William Dean, PhD
Co-Chair Lake Ecology Team

Bill Hecht

Jed Delmonico

J.D. Delmonico, MBA

Robert DeWitt

Charles Driscoll, PhD

Fran Rotunno Fish, RN, MS
Chair Membership Fund
Co-Chair Legacy Fund

Joe Grasso, MILR

Dana Hall, PhD
Chair Watershed
Improvement Projects

Brian Harkins, MBA

Deborah M. Hole, MLS

Elizabeth Liddy, PhD

Robert Liegel, Esq.

Neil Murphy, PhD

Patricia Orr

Kim Persse

Peter Plumley, PhD

Kate Ryan

James Tift, MD
Chair Community Outreach &
Education

Frank Moses
Executive Director



Harmful Algal Blooms (HABs) indicate environmental changes *not only in the water but on land*, particularly runoff containing excess phosphorus and nitrogen nutrients.

SLA ADVISORY COUNCIL

The Advisory Council is comprised primarily of community members whose role is to advise the SLA Board on a variety of issues related to protecting Skaneateles Lake and its watershed.

Eric Allyn
Community Leader

Deborah Bobbett
Well Balanced Studio Co-Owner

Dave Birchenough
Member of SLA Legacy Fund
Appeal Committee

John Cohan
Margaritaville, Inc. CEO

Mac Cummings
Terakeet CEO & Reputation.com
Chairman

Ben Eberhardt
MidLakes Navigation Director of
Operations

Michael Hearn
Genesee Capital Advisors

Linda LeMura, PhD
LeMoyne College President

Joanie Mahoney
SUNY-ESF President

Dave Matthews, PhD
Upstate Freshwater Institute
Executive Director

Mike McMahon
SLWAP Board Chairman
& Agribusiness Leader

Jessica Millman
Soderberg Charitable
Foundation Executive Director

Jerry Morrisey
Finger Lakes Realty Partners

Andy Robinson
Newhouse School of
Communications (retired)

Sam Rowser
OnPoint for College
Executive Director

Maureen Soderberg, MD
Community Leader

Simon Solomon
CNY Land Trust
Executive Director

Paul Torrisi, Jr.
Morgan Stanley Armory Group
Senior VP

Jim Tuozzolo
Pyramid Companies Partner

Andy Zepp
Finger Lakes Land Trust
Executive Director

SLA COUNCIL OF SCIENCE ADVISORS

Helping to promote science driven solutions.

Bill Dean, PhD
SLA Board Member & Lake Ecology Team
Co-Chair

Buzz Roberts, MD
SLA Board VP & Lake Ecology Team
Co-Chair

Dana Hall, PhD
SLA Board Member & Watershed
Improvement Projects Sub-committee
Chair

Charley Driscoll, PhD
SLA Board Member
& Syracuse University Professor

Neil Murphy, PhD
SLA Board Member
& SUNY-ESF Professor

Jim Tifft, MD
SLA Board Member

Paul Torrisi, MD
SLA Board President

Bahram Salehi, PhD
SUNY-ESF - Salehi GeoLab Professor

Chris Scholz, PhD
Syracuse University Professor of
Paleolimnology and Rift Basin Evolution

David Matthews, PhD
9E Plan Modeling Team Member &
Upstate Freshwater Institute Director

Greg Boyer, PhD
SUNY-ESF Professor of Chemistry

Donald Leopold, PhD
SUNY-ESF Restoration Science Center
Co-Director

Aimee Clinkhammer
Watershed Coordinator at NYSDEC
Finger Lakes Water Hub

Frank Moses
SLA Executive Director

SLA LAKE ECOLOGY TEAM

Key Stakeholders, government and NGOs alike, working together toward a common goal.

SLA BOARD MEMBERS & STAFF

Bill Dean, PhD

SLA Board Member & Lake Ecology Team Co-Chair

Buzz Roberts, MD

SLA Board VP & Lake Ecology Team Co-Chair

Dana Hall, PhD

SLA Board Member & Watershed Improvement Projects Sub-committee Chair

JD Delmonico

SLA Board Member

Bob DeWitt

SLA Board Member & Town of Niles Planning Board Chair

Charley Driscoll, PhD

SLA Board Member & Syracuse University Professor

Fran Fish

SLA Board Member

Joe Grasso

SLA Board Secretary

Rich Hole

SLA Board Treasurer

Neil Murphy, PhD

SLA Board Member & SUNY-ESF Professor

Kim Persse

SLA Board Member & Village of Skaneateles Environmental Advisory Committee Chair

Jim Tiftt, MD

SLA Board Member

Paul Torrisi, MD

SLA Board President

Frank Moses

SLA Executive Director



The Harmful Algal Bloom (HAB) seen around our lake from 2017 Lakewide Bloom. HABs caused by excess nitrogen and phosphorus threaten drinking water purity, recreational use, tourism and property values.

GOVERNMENTAL/AGENCY REPRESENTATIVES

Hon. Janet Aaron

Town of Skaneateles Supervisor

Hon. Mary Sennett

Village of Skaneateles Mayor

Hon. Joan Jayne

Town of Niles Supervisor

Hon. Louis Martin

Town of Scott Supervisor

Hon. Chris Kozub

Town of Spafford Supervisor

Hon. Ben Walsh

City of Syracuse Mayor

Hon. Julie Abbott

Onondaga County District 6 Legislator

Hon. John Lemondes

NYS Legislator for Assembly District 126

Hon. Jeff Gallahan

NYS Legislator for Assembly District 131

Hon. Rachel May

NYS Senator for Senate District 48

Hon. Lea Webb

NYS Senator for Senate District 52

Hon. Brandon Williams

22nd US Congressional District Representative

Jim Greenfield

Town of Skaneateles Deputy Supervisor

Aimee Clinkhammer

New York State Department of Environmental Conservation
Finger Lakes Hub Watershed Coordinator

Rich Abbott

City of Syracuse Water Department Watershed Quality Coordinator

Greg Loh

City of Syracuse Chief Policy Officer

Mike Plochocki

Onondaga County Director of Water Quality Initiatives

Mark Burger

Onondaga County Soil & Water Conservation District Executive Director & Skaneateles Lake Watershed Agricultural Program Manager

Doug Kierst

Cayuga County Soil & Water Conservation District - Executive Director

Kathy McGrath

Cortland County Soil & Water Conservations District - Water Quality Specialist

WATERSHED ADVISORS AND CONSULTANTS

Aaron McKeon

CNY Regional Planning & Development Board - Program Manager

Max Heitner

Finger Lakes Land Trust Director of Conservation

Simon Solomon

CNY Land Trust - Executive Director

Olivia Green

The Nature Conservancy - Finger Lakes Water Quality Specialist

Camille Marcotte

Cornell Cooperative Extension Water & Ecology Educator

Brandeis Neveldine

SUNY-ESF Restoration Science Center - Development & Program Leader

Sam Quinn

SUNY-ESF Restoration Science Center - Research Assistant & Instructor

Bahram Salehi, PhD

SUNY-ESF - Salehi GeoLab Professor

Chris Scholz, PhD

Syracuse University Professor of Paleolimnology and Rift Basin Evolution

Richard Wiles

Environmental Consultant

Brian Madigan

Environmental Consultant

Mike McMahon

EZ Acres Farm Owner

Tim Johnson

Anchor QEA Partner & Principal Scientist

Liz Moran

9E Plan Consultant for Ramboll via EcoLogic

Tony Eallonardo, PhD

9E Plan Modeling Team Member & Ramboll Technical Manager

David Matthews, PhD

9E Plan Modeling Team Member & Upstate Freshwater Institute Director

Aimee Clinkhammer

Watershed Coordinator at NYSDEC Finger Lakes Water Hub

Rob Bellinger

Water Technologist Consultant

GET TO KNOW THE...

Skaneateles Lake Association (SLA)

CLEAR LAKE.
PURE WATER.

Since 2007, SLA has conducted *the most robust, continuous effort* of milfoil control in the Finger Lakes.

Let's get a minor point of confusion out of the way. Here is what we are not. The Skaneateles Lake Association is not a traditional lake association comprised of lake front property owners. That couldn't be further from the truth. We represent anyone and everyone that has an interest in a clear and pure Skaneateles Lake and deliver innovative programs, projects, approaches and collaborations that help make that a reality.

THE VERY REAL THREATS FACING SKANEATELES LAKE

Skaneateles Lake is seen by many as a crystal clear, pristine jewel among the Finger Lakes. Recognized as one of the cleanest and clearest lakes in the nation, Skaneateles is one of a small handful of water bodies in the U.S. that is so clean that it provides unfiltered drinking water to a metropolitan community. But the pristine status of our lake is under siege as never before with an unprecedented myriad of threats compromising the ecology and long-term quality of the lake, including among others:

- Harmful algal blooms
- Eurasian watermilfoil proliferation
- Hydrilla invasion threat
- Soil erosion & lake siltation
- Unabated storm runoff
- Increased nutrient pollution
- Watershed flora threats
- Faulty septic & pollution sources

While the challenges are complex, what we do is very straightforward. The SLA pursues projects, research, programs and communications that help to either eliminate or mitigate these risks. Whatever is in the best interests of the lake is a top priority for the SLA.



EURASIAN WATERMILFOIL



HARMFUL ALGAL BLOOMS



HEMLOCK WOOLLY ADELGID



SOIL EROSION / LAKE SILTATION

How SLA Initiatives Are Funded

FUNDING SOURCES

PROGRAMS & ACTIVITIES

Membership Fund

- Invasive Species: Milfoil Control**
 - Milfoil Removal Program
- Aquatic Invasive Species Prevention**
 - Watercraft Launch Stewardship

Legacy Fund

- Watershed Improvement Projects**
 - Stream Improvement Projects
 - Runoff & Erosion HOA Projects
 - Hemlock Forest Protection Program
 - Grant Seed Funding Projects
 - Partnering with ESF-Restoration Science Center
- Research & Monitoring**
 - Harmful Algal Bloom Monitoring & Response
 - Stream Monitoring
 - In-Lake Monitoring
 - Watershed Monitoring
- Community Education & Outreach**
 - Emerging Watershed Scientists Program
 - Lake Friendly Living Program
 - ESF-Restoration Science Center Community Education
 - Community Forums
- Research & Education Boat - The BOB**
 - Milfoil-Macrophyte Surveying
 - ESF Satellite Learning - Water Clarity Project
 - SU Lake Sediment Core Sampling
 - Harmful Algal Bloom Monitoring
 - Citizen Statewide Lake Assessment Program
 - On The Water Education Program

SLA LEGACY FUND:

Investing In A Clear, Pure Future

**YOUR LAKE. YOUR
LEGACY. OUR MISSION.**



AN INVESTMENT IN THE FUTURE OF OUR LAKE

The SLA Legacy Fund was established in 2018 in response to the 2017 crisis of a lake-wide Harmful Algal Bloom (HAB) that turned the entire lake green with the potential for producing harmful toxins to both animals and humans. This crisis prompted development of SLA’s Harmful Algal Bloom Response Plan. The four pillars of the plan focus on:

- Lake Ecology Team
- Education & Community Outreach
- Establishing Watershed Wide Governance
- Fund Development For Watershed Improvement Projects

The SLA Legacy Fund Lake Protection Plan is focused on directly addressing many of the greatest threats to the quality of our lake and funds the people, projects and progress that will keep Skaneateles Lake amongst the cleanest in the country. These plans fall into three primary categories of Watershed Improvement Projects, Research & Monitoring and Community Outreach & Education.

In the case of Skaneateles Lake, an ounce of prevention can be worth millions and millions of dollars and avert long-term irreversible damage to the ecosystem. An investment in the SLA Legacy Fund offers a multiplying effect that can deliver more than an ounce of prevention.

“So, how do we prevent blooms? The only thing we can do is nutrients. This is why there is a big focus on preventing nutrients from coming into the lake.”

- Dr. Greg Boyer, SUNY ESF

**SLA LEGACY FUND
LAKE PROTECTION PLAN:**

1 Watershed Improvement Projects	2 Research & Monitoring	3 Community Outreach & Education
--	-----------------------------------	--

SLA LEGACY FUND
EXPENDITURES AT WORK

\$828,018

First 5 Years

2018-2023

\$390,459

WATERSHED IMPROVEMENT
PROJECTS

\$362,270

RESEARCH & MONITORING

\$75,289

COMMUNITY OUTREACH
& EDUCATION

Projects Designed to Fight Algal Blooms

- Projects aimed at reducing excess nutrients from entering Skaneateles Lake
- Stormwater runoff protection buffer projects working with landowners, community partners, and scout groups
- Ditch improvement project with shared private road community and Soil & Water Conservation District
- Support of expertise from engineering consultants at Anchor QEA in development of improvement project program
- Dowling Creek Stream Stabilization Project with US Fish & Wildlife Service, the Nature Conservancy, SUNY ESF, Anchor QEA Engineers, and SCC
- Upper Willow Creek water control structure and detention basin improvement with local andowner and Anchor QEA Engineers
- Lower Willow Creek Sediment Reduction project leveraging SLA Legacy Fund investment with landowner and grant support from Great Lakes Commision Program
- Leveraging survey and project design support for additional investment from Onondaga County for shared private road community lake protection project
- Protection of Hemlock Trees in ravines and steep shorelines to help retain soil from washing into lake



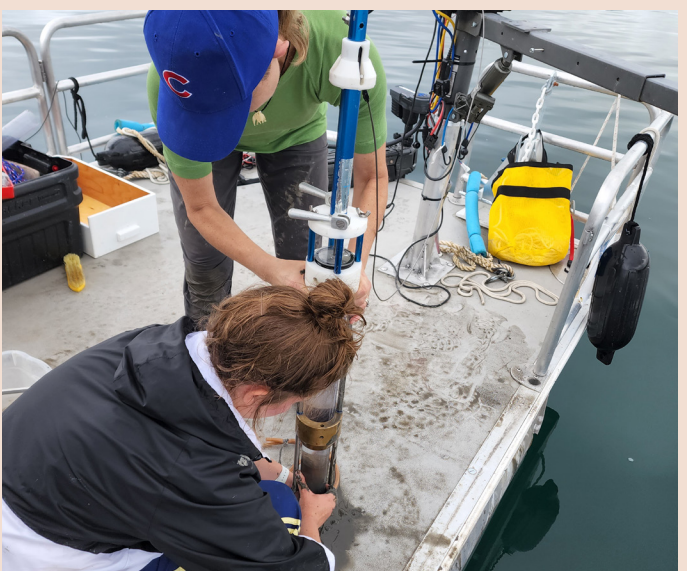
↑ SLA's inaugural collaborative Watershed Improvement Project, Dowling Creek, included The Nature Conservancy, who provided staff to develop initial designs with the US Fish & Wildlife; Anchor QEA Engineers, who helped finalize designs; SUNY-ESF, who provided expertise and plants to enhance the stream habitat; and the site host, the Skaneateles Country Club who, along with SLA, provided staff and financial support for the project.



← Capturing sediment and stabilizing Willow Creek at key locations while Leveraging Legacy Fund Investments with landowner cost-sharing, in-kind services from businesses like Brillo Excavation, and garnering federal dollars through the Great Lakes Commission. Willow Creek was given high priority due to its location being south of one of the City of Syracuse's drinking water intake pipes combined with a history of sediment loading and small algal blooms at the mouth of the stream.

Data Driving
Decisions in Lake
Protection

- Funded stream analysis by Upstate Freshwater Institute used to establish Nine Element Plan
- Syracuse University (SU) stream analysis
- SU Precipitation & associated nutrient loading studies
- SU lake bottom sediment sampling
- Bloom Optix Drone studies on stream nutrient loading
- SUNY ESF Satellite Artificial Intelligence and Machine Learning for measurement of lake clarity
- SUNY ESF eDNA studies in sourcing of nutrient in stormwater and watercourses
- Supporting boat pilot to facilitate on lake research



Inspiring and
Empowering Lake
Stewardship



↑ Skaneateles Lake Emerging Watershed Scientists - City of Syracuse students learn about drinking water stewardship as Anchor QEA Principal Tim Johnson showcases engineering and design of watershed improvement projects as a solution for improving water quality.

- Skaneateles Lake Emerging Watershed Scientists
- Lake Friendly Living initiative
- Landowner consultation
- Community education presentations
- Landscaping Workshops

← Lake bottom sediment core sampling research by SU supported by SLA Legacy Fund to better understand nutrients feeding Harmful Algal Blooms.

SLA LEGACY FUND AT WORK

5 Year Lake Protection Plan

2023-2027

GOAL

\$4,000,000

\$2,750,000

WATERSHED IMPROVEMENT PROJECTS

Projects Designed to Fight Algal Blooms

SLA's watershed improvement action plan for 2023 is budgeted just under \$300K, but will continue to be an area of increased investment for years to come.

The plan will cover core lake protection programs including:

- 2 main improvement projects in 2023 with increase in capacity to take on more projects
- Grants for shared private road communities enhancing watercourses
- Continuation of Hemlock tree protection
- Investment into ESF's Restoration Science Center land stewardship
- Establishment of a maintenance fund to subsidize landowner cost to ensure lake protection project integrity over time

With an increase of watershed wide planning, surmounting threats from more intense rain events, the need to sustain improvement project integrity, and identification of more problem areas requiring solutions in nutrient reduction and resilience, SLA will be garnering with the community \$2.75 million to invest back into the lake and its watershed over the next 5 years.

\$350,000

RESEARCH & MONITORING

Data Driving Decisions in Lake Protection

Investments in research will continue to:

- Support science that aids in prioritizing projects that help reduce nutrient loading and maintain integrity of aquatic life.
- Evaluate the effectiveness of programs & projects
- Pilot studies on emerging technologies and strategies designed for lake protection
- Continued research in support of monitoring:
 - in-lake water quality
 - stream stability
 - watershed integrity, and
 - impact from invasive species

NYS DEC, SUNY-ESF, Syracuse University, Finger Lakes Institute and other academic institutions and research groups with input from science advisors will be at the forefront.

\$600,000

COMMUNITY OUTREACH & EDUCATION

Inspiring and Empowering Lake Stewardship

SLA is targeting an investment of \$500,000 over the next 5 years to grow our community outreach & education initiatives. Activities and programs will include, but are not limited to:

- Advancement of the Skaneateles Lake Emerging Watershed Scientists (SLEWS) program to connect students with ongoing research and associated careers in water protection
- Development of a digital guide to Lake Friendly Living with continued workshops and impact events
- Bolstering of lake protection awareness campaigns and education lecture and forums
- Support of communications and engagement with Executive Director and Community Engagement Coordinator
- Investment in community education through ESF Restoration Science Center programs

SLA's community engagement plan for 2023 alone with investment in SLEWS, Lake Friendly Living, ESF Restoration Science Center, Dr. Robert Werner Research & Education efforts, staffing, and additional initiatives totals over \$100,000.

\$300,000

CAPITAL RESERVE FUND

Investing in Lake Protection Hardware

Establishing a reserve for capital costs through SLA's Legacy Fund will allow for responsible growth to maintain and replace critical equipment necessary for lake protection operations.

SLA anticipates the need for a \$300K fund over 5 years to support the following capital improvements:

- Maintenance and equipment upgrades for the Robert Werner Research & Education Boat - "The Bob"
- Upkeep and motor and pontoon replacements for Milfoil Control Vessels
- New purchase and repair and maintenance of Mifol Control Benthic Matting
- Upkeep of Milfoil Control Diving Equipment
- Purchase and maintenance of watercraft decontamination infrastructure to help prevent invasive species
- Purchase and upkeep of watershed improvement project infrastructure
- Support for lake monitoring research equipment

SLA LEGACY FUND

Investors

2018-2023
DONATIONS & PLEDGES

We extend our deep appreciation to each of our donors who have joined with us in all of our efforts to help prevent future Harmful Algal Blooms and keep our Lake clear and our Lake water pure.

“Water links us to our neighbor in a way more profound and complex than any other.”

- John Thorson



Founders

2018 - 2023 cumulative giving of more than \$100,000

- Allyn Family Foundation
- Jonathan & Louisa Cohan
- Maclaren & Rochelle Cummings
- Patrick & Jessica Danial
- Michael J & Noreen R Falcone & Family
- John & Kimberly Mezzalingua
- Steven & Jacquelyn Miron
- James Pulaski
- Peter & Elsa Soderberg
- Peer & Maureen Soderberg

Leaders

2018 - 2023 cumulative giving of \$25,000 to \$99,999

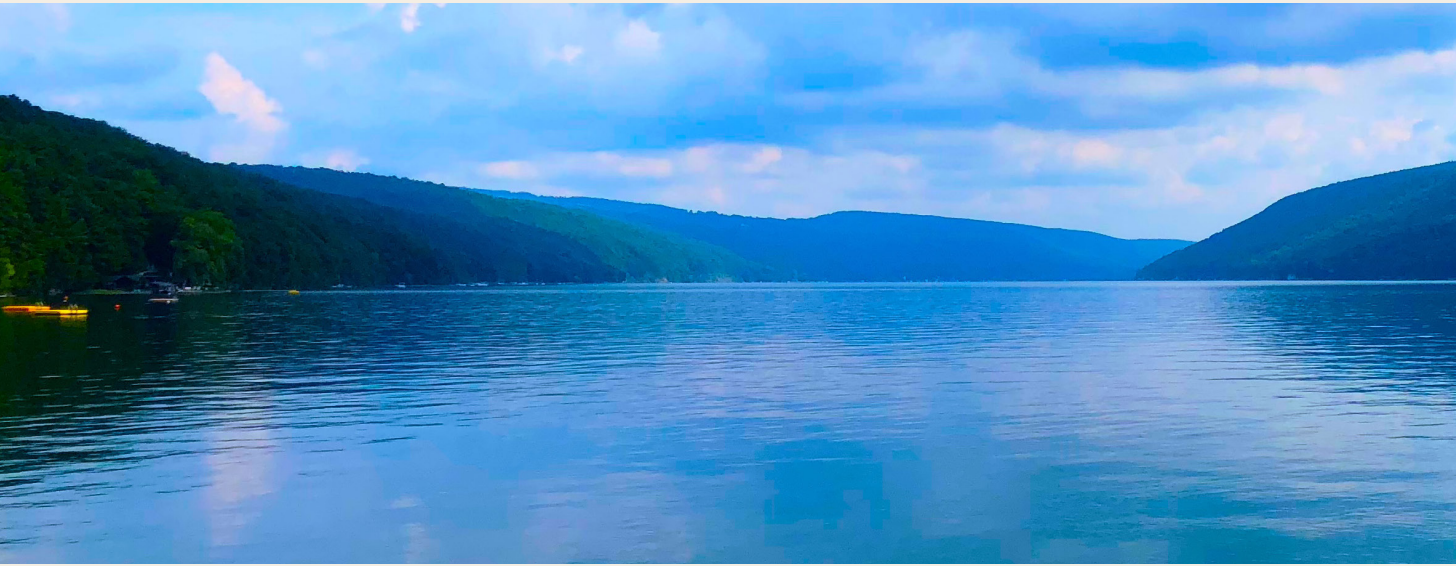
- Edward & Deborah Brennan
- Mark & Mara Charlamb
- Craig & Barbara Froelich
- Christopher & Amy Neumann
- Robert & Sally Neumann
- Sara Recktenwald
- Robert & Lynne Scheer
- Gary & Virginia Shanley
- Jennifer Sutherland

Benefactors

2018 - 2023 cumulative giving of \$5,000 to \$24,999

- Anonymous
- David & Amy Allyn*
- Mark & Allison Allyn*
- Walter Benson & Katherine Cogswell
- David Birchenough & Carrie Lazarus
- Mary Cotter
- Sid Devorsetz
- William & Barbara Dean
- Edward & Margaret Dienst
- Dwight W. Winkelman Foundation
- Holland Gregg & Patience Brewster
- Finger Lakes Realty Partners (Jerry & Kathleen Morrissey)
- Hamilton & Fran Rotunno Fish
- Joseph & Marie Grasso
- Dana & Susan Hall
- Joseph & Mary Ellen Hennigan
- Richard & Deborah Hole
- Bruce & Linda Kenan
- Darlene Kerr
- Max & Agnes Kunz
- Paul & Kathy Leone
- John MacAllister & Laurel Moranz
- John & Elizabeth McKinnell
- Gardner & Lynn McLean
- Mid Lakes Navigation (In-Kind)
- Jim & Julie Moore
- David Muir
- Thomas, Camille & Ashley Potter
- William & Gretchen Roberts
- Dan & Linda Roche
- Angelo & Margaret Scopelianos
- James & Deborah Tifft
- Paul & Mary Torrisi
- Salli & James Tuozzolo
- John Walsh

*indicates additional donation made via Allyn Family Foundation



Friends

2018 - 2023 cumulative giving
of up to \$4,999

Julie Abbott
Douglas Allis
Eric Allyn & Mef O'Connell*
William Allyn*
Robert & Barbara Amsler
Roland & Tacie Anderson
Anonymous
Anonymous
Anonymous
Anonymous
Armstrong Family
Sandra Attleson
George & Sharon Azzam
James & Catherine Baranello
John & Maureen Baringer
Edward & Sharon Barno
Annette Becker
Gwen Birchenough
Mark & Leokadia Bitz
Paul & Karen Black
Donald & Jane Blake
Kenneth & Marjorie Blanchard
Wendy Blewett
Edward & Mary Blum
James & Julie Boeheim
Carlile & Barbara Bolton-Smith
Michael Boudreau & Julie Stafford
James & Cynthia Bright

Virginia Bryce
Bryce Family Foundation
David & Mary Bundy
Richard & Joyce Campbell
Jeffrey & Mary Beth Carlberg
Colin & Carrie Carroll
Cayuga Tree Service
Peggy Chase
Steven Clymer & Brenda Sannes
Paul & Linda Cohen
William & Martha Cole
Columbian Foundation
Ellen Compton
Stephen & Alexandra Congel
Laurie Cottrell
Bill & Jane Cummings
William & Nicole Cummings
David & Lynne Curtin
Susan Dailey
John & Patricia Dale



Erika Davis
Peter & Colleen Dean
William & Deborah DeLaney
Jed & Barbara Delmonico
JD & Mary Delmonico
Patrick & Emma Delmonico
Delmonico Insurance Agency
Michael & Diane Dolcemascolo
Jane Downs
Patrick Doyle & Elizabeth Downes
Gregory & Michelle Drumm
David Duggan & Lynn Cleary
Nancy Easter
Barbara Egtvedt
F. J. Estlinbaum Barge & Crane
Elizabeth Etoll
Lois Exner
Anne Fairbanks
Floreck Family
Gianfranco & Johanna Frittelli
Christine Fry
William & Kimberly Gilberti
Goetzmann Family
Michael & Kathleen Gorr
David Graham
James & Emily Gregg
Hanley Family
Brian & Maureen Harkins
Robert & Martha Harris
John Havemeyer
Mark Heffernan

Daniel Hennigan
James & Ann Higbee
Ann Hinchliff
David Honold
Jayne Howard
Robert & Claire Howard
Robert & Marcia Hunt
Kenneth Hyde & Nellie Ramsden
Catherine Kane
Kathryn, Max & Isabella Karpinski
Mary Jacqueline Keady
Chris & Lynn Kelly
Margaret Kelly
Daniel & Virginia Kenney
David & Sherill Ketchum
Jeffrey Kirshner& Lorraine Rapp
Konrad Family
Robert (Chris), Karen & Georgia Kreidler
Judith Krieger
Kris-Tech Wire Co, Inc.
W. Theodore & Joan Kuck
Gary & Lucinda Kuhns
Kevin La Grow
Benjamin Lavery & Maura Swan
James Leonard & Patricia O'Shaughnessy
Liz Liddy
Joann Loftus
Thuan & Allison Loi
Eloise Luchsinger
Robert & Elizabeth Legg Madden
Mandana Barn (Tim & Heather Carroll)

Friends -continued
2018 - 2023 cumulative giving
of up to \$4,999

Nancy Marquardt
Todd & Jill Marshall
William Mayo
William & Patricia McAvoy
Joseph McCaffrey & Jacqueline K. Bays
David & Norma McCarthy
William & Cynthia McCauley
John McDevitt & Helen Tai
Edward & Charlene McGraw
Lindsay McMillan
Victoria Meyer
Daniel & Kathleen Mezzalingua
James Miller
Dave & Paula Miller
Toby & Jessica Millman
Robert Moses
Randall Mott
Lynsa Mura
Neil & Joanne Murphy
Nancy Murray
Michael Murray Memorial Donations
Kevin Nichols
Mr. & Mrs. Richard Nicklas
Town of Niles
North End Outdoors
(Jeff & Debbie Bobbett)
Sean & Laura O'Keefe
Patricia Orr

John Osborne
John & Sharon Paddock
Joseph & Debra Paduda
Lawrence Palmieri
John & Lynda Parsons
Peter & Ann Paullin
Nancy Peck
Jason & Kim Persse
Joseph Howard Phillips
Paul & Danielle Pimpinella
Michael Plochocki & Family
Alex & Carol Protasiewicz
Patrick Riccardi
Joseph & Lynne Romano
Christopher & Amy Rudolph
Daniel & Linda Scaia
Anne Hurley Scholl
Mark & Misty Schwab
Robert & Timothy Scott & Kathleen Gentile
Mary Sennett
Carol Shannon
David Sheppard
Stephen Shope
Christopher Short & Abigail Duggan
Ryan Sidebottom & Natasha Ginzburg
Nicholas & Cynthia Signorelli
Keith & Helen Simonelli
Skaneateles Garden Club
Skaneateles Sailing Club
Skaneateles Town Square
(Jeffrey & Kate Youle)

Skaneateles Winding Way Association
Slottje Family
James & Susan Solomon
Steven & Sharon Songer
William & Molly Spalding
Edward Spencer
Joseph & Robin Steencken
LaDorna Stephens
Martha Stephens
Warren Stoddard
Jeffrey Stregiel
Walter & Kathleen Sullivan
John & Anne Sveen
Ben & Kathleen Tarantino
Bruce & Patricia Texiera
Nancy Tiedemann
Laurie Timmons
Paul & Meredith Torrasi

Daniel & Susan Troup
Mary Tucker
Thomas & Leah Valenti
James Vitikus
Tom & Maureen Walsh
Robert Warfield, Jr.
Wegmans Food Markets, Inc.
Robert & Jo Werner
Peter White & Mary Socci
White & White Antiques, Inc.
(Steve & Bev White)
David & Marilee Williams
Patricia Woodcock
Jonathan Woodcock
Warren & Susan Wulff
Michael & Vanessa Yates
John & Carol Young

**indicates additional donation made via
Allyn Family Foundation*



The Dr. Robert Werner

RESEARCH AND
EDUCATION BOAT

For many years, the Skaneateles Lake Association’s (SLA) esteemed Board Member and Lake Ecologist, Dr. Robert Werner, (Bob) had conducted lake surveys, water sampling and other studies using his own pontoon boat in supporting the SLA’s efforts to protect Skaneateles Lake. While he was often assisted by other Board Members and colleagues, he carried out much of the work alone on his own boat. In 2019, Dr. Werner advised his fellow Board Members that he was no longer going to be able to conduct the lake surveys and be available to conduct the other sampling and studies he had conducted.

The SLA Board recognized that we were going to need to acquire our own boat in order to be able to continue to do all the work that Dr. Werner had done for years and even more including educational programs for youth and adults. It was immediately decided that the boat would be named for Dr. Werner.

An initial concept for the boat was developed and drawings of the concept were made. We were pleased to be able to share the concept, renderings, and proposed name for the boat before Bob passed. His comment on seeing the plans was brief ... “this will be good”.

The Board had already started to reach out to community members for donations to build and equip the boat. After Dr. Werner’s passing, donations in his honor and donations specifically for the boat poured in from friends, family, colleagues and many community members.



Special thanks to SLA volunteers Bill Dean and John Menapace for designing and fabricating this sophisticated research/education vessel which will serve our lake and watershed region for many years to come!

The Dr. Robert Werner Research & Education Boat, affectionately known and secondarily, named “The Bob”, was commissioned into action at the Skaneateles Country Club on June 27, 2022 and was only made possible by the generosity of all of the following:

- | | | |
|------------------------------------|---|--|
| David & Amy Allyn | Greenville LLC | Steven Phillippy & Janice Kemp Phillippy |
| Anonymous | Holland Gregg & Patience Brewster | Shirley Powers |
| Anonymous | Amy Lynn Gregory | Floramay Racz |
| Henry & Helga Beck | John David Hammond | N. Sondor & Kristy Racz |
| Dessa Bergen | Brian & Maureen Harkins | Yvonne Racz |
| David Birchenough & Carrie Lazarus | Kenneth & Barbara Hearst | William & Gretchen Roberts |
| Wendy Blewett | Donna Himmelfarb | Andy & Kitty Robinson |
| Brinson Marine | Richard & Deborah Hole | Daniel & Linda Roche |
| Virginia Bryce | Robert & Claire Howard | Scott Rogers |
| Laura Busby | Peter & Jane Hueber | Michael Schrader & Lauren Kochian |
| Jeffrey & Marybeth Carlberg | Jackie Keady | Sevey’s Boatyard |
| Delores Chappell | David & Sheril Ketchum | Skaneateles Country Club |
| Aimee Clinkhammer | Edward & Lena Kochian | Skaneateles Sailboat Shop |
| Paul & Linda Cohen | Richard & Mary Kokosa | Steve & Sharon Songer |
| The Columbian Foundation | Dorothy Krause | Wolfram & Elena Stahl |
| Stephen Congel | Judith Krieger | Mr. & Mrs. Robert A. Stevens |
| Suzanne Congel | Lakeview Auto & Marine (Bob, Terri & Rachel DeWitt) | Gene & Joan Tarolli |
| Jim & Sharon Cross | Carolyn Legg | Nancy Tiedemann |
| Robert & Roberta Culbertson | Brian & Jean Madigan | James & Deborah Tifft |
| Jeffrey & Barbara Culhane | Mary Marshall | Paul & Mary Torrisi |
| William & Barbara Dean | Kevin & Fran McCormack | Larry & Katherine Weiss |
| Merrill & Paula Denslow | Mercury Motor Company | Philip & Ashley Wesson |
| Sid & Suzanne Devorsetz | Jim & Julie Moore | Joe & Shasta White |
| Charles & Kimberly Driscoll | Judith Morrissey | Randall & Paula White & Frank Canastrano |
| Ham & Fran Rotunno Fish | Frank Moses | Charles Williams |
| Ronald & Rose Ann Gay | Patricia Orr | Lucy Williams |
| Sheila Goetzmann | Michael Paciorek | Marilyn Wurzburger |
| David Graham | Lawrence & Nan Pardee | |

SLA MEMBERSHIP FUND

Programs

The SLA Membership Fund is our primary funding source to support on-going prevention and remediation efforts to combat invasive species. SLA implements a Eurasian watermilfoil (*Myriophyllum spicatum*) control program on Skaneateles Lake that has now reduced that species coverage to a level only requiring “maintenance” control.



*Milfoil Control work boat with matting on board.
Photo courtesy of Ty Denslow.*

Patch of Eurasian Watermilfoil on Skaneateles Lake

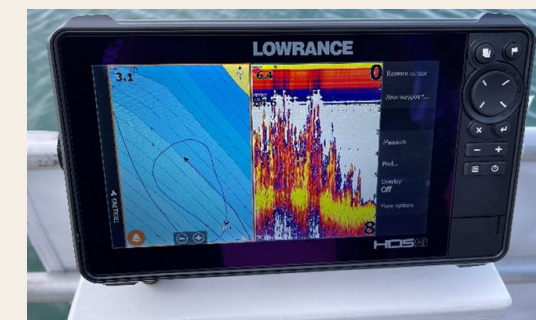
AIS Prevention and Milfoil Control yearly costs are close to \$250,000 **and primarily supported by annual membership funds.**

*Milfoil Control Operations in 2022*

Over 6 acres of matting designed to reduce Milfoil populations was strategically deployed by John Menapace and Aquatic Invasives, Inc. using sonar survey information collected by SLA.



Aboard “The Bob” – (Dr. Robert Werner Research & Education Boat) – SLA Board Members, Dr. Bill Dean, Co-Chair of Lake Ecology Team; Dr. Paul Torrisi, President; Dr. Buzz Roberts, VP, Lake Ecology Team Co-Chair, and volunteer Director of Watercraft Stewardship program since 2012, conducting a Milfoil Survey.



Side-scan Sonar imaging with Milfoil signature.

Aquatic Invasive Species Prevention with Watercraft Steward Program

Our neighbor, Cayuga Lake is both home to Hydrilla **and the #1 source of boaters coming to Skaneateles Lake.**

SLA Watercraft Steward Jim MacLachlan surveys incoming boats to protect Skaneateles Lake from any new threats of invasive species like Hydrilla.



L to R – City of Syracuse Mayor Ben Walsh with head SLA Boat Steward Marty Minet and Sr. Steward Roy Truswell. City of Syracuse continues to be a partner leveraging SLA membership funds in support of preventing new invasive species from entering Skaneateles Lake.

Skaneateles Lake Association MEMBERS

Just as clear, pure water is the lifeblood of Skaneateles Lake and the Skaneateles community, membership is the lifeblood of the Skaneateles Lake Association. A strong membership supports innovative and dynamic projects & programs that can help us all to achieve lasting results. We'd like to thank our Members which include individuals, families, businesses, and organizations.



MEMBER LIST - JANUARY, 1 2022 - MARCH 31, 2023

Janet Aaron	Anonymous 73	James & Catherine Baranello	Anonymous 43	Anonymous 79	David & Mary Bundy	Lee Casler	Kip & Becky Coerper
Mark & Diane Aberi	Curt & Susan Andersson		Paul & Karen Black	Ayham & Gillizn Boucher	Lance & Patty Burghardt	Christina Castle	Coffin Corner (Sarah Fitzgerald & Patricia Coffin)
Peter & Sharon Andrus	Armstrong Family	John & Maureen Baringer	Walter H. Blackler	Bouquet Holstein PLCC (Jeff & Cate Davis)	Phil & Kathy Byrne	Jane Cate	Paul & Linda Cohen
Paul Alciati	Michael & Kelly Arroyo	Edward & Sharon Barno	Patricia Blackwell	William & Julie Bourke	Joseph Calipari	Cayuga Tree Service (Christopher & Marianne Sandstrom)	John & Louisa Cohlan
Richard Alciati	Linda Merrill Arthur	Bartlett Tree Experts	Donald & Jane Blake	Jack & Katherine Boyce	Mark & Janet Calipari	Peter & Danielle Cerimeili	Larry Cole & Terry Askey-Cole
David & Amy Allyn	Aster Weddings & Events (Shannon Pratten)	Anonymous 70	Susan Blakney	Greg Boyer	Robert & Jane Calkins	Paul & Joy Chamandy	Martha Cole
Lew & Dawn Allyn		Ronald Beavers & Karen Lewis	Scott & Madeleine Blanchard	Mary Bradly	Brian & Romy Callahan	Anonymous 80	Ira Coleman & Debra Hurley
Mark & Allison Allyn	George & Charlene Atkinson	Henry & Helga Beck	Kenneth & Marjorie Blanchard	Dan & Judy Bragg	John & Elet Callahan	ChaseDesign	C. J. Collins
William Allyn	Sandra Attleson	Annette Becker & Family	Blewett Family	Anonymous 57	Anonymous 52	Chestnut Cottage	Columbian Foundation
Eric Allyn & Margaret O'Connell	Joseph & Deborah Augustine	Robert & Jodi Bellinger	Bluewater Grill	Edward & Deborah Brennan	Joan Callaway	Elizabeth Christopher	Comer Family
Nicole Way Allyn	George & Sharon Azzam	Andrea Belusko	Anonymous 78	Jim & Cindy Bright	Jeff & Caitlin Campbell	Paul & Maria Christou	Joseph & Katherine Compagni
Allyn Family Foundation	Donald Babcock & Caroline Kaye	Matt & Gina Benedict	Bobbett Family	Brinson's Marine Group	Richard & Joyce Campbell	David Churchill & Judy Sweet	Adam & Sarah Compton
Dawn Altmeyer	Anonymous 8	Benevity Community Impact Fund	Casmir Bobowski	George Bristol & Barbara Kay	Kenneth Cannon & Joanne Viggiano	Michael & Pamela Ciarla	Ellen Compton
Amber Well Drilling & Water Systems	Mary Ellen Banazek	Walter Benson & Katherine Cogswell	Christoper Bodell & Alicia Tsai	Jonathan Brodock & Beecher Graham	Anonymous 83	Jim & Sharon Cirincione	Compton Family
Anonymous 62	Christine Banke & Melinda Carney	William & Dessa Bergen	Orville & Diane Boden	Marilyn Brothers	Anonymous 82	Kimball Clark	Suzanne Congel
Bill & Susan Anderson	Robert & Lisa Banuski	Berkshire Hathaway CNY Realty (Mary MacKaig)	James & Julie Boenheim	Dillon & Katie Brown	Patti Carey	Anonymous 38	David & Ruth Conley
Roland & Tacie Anderson		Thomas Bersani & Joan Christy	Jeffrey & Kristine Bogart	Gerald Brown	Jeffrey & Marybeth Carlberg	Philip Clayton & Colleen Plimpton	Richard & Alison Conley
		Dave Birchenough & Carrie Lazarus	Connie Bohrer	Kay Bruening	Kathryn Carlson	Anonymous 89	Patrick & Deborah Connolly
		Margaret Bisgrove	Robert & Carina Bone	Marilyn Isler Brunger	Colin Carroll	Steven Clymer & Brenda Sannes	Barbara Connor
		Lee & Karen Bishop	Joseph Bongiovanni & Heather Lane	Virginia Bryce	Blake & Brittney Carter	Alan & Joan Coates	Bill & Pat Conole
			Michael & Margaret Bongiovanni	Anne Buehler	Anonymous 74	Bill & Betty Cochran	Nancy Coon
			Anonymous 61	Taber & Sara Buhl	Brian & Roni Carvalho		
					Burt Carver		

Due to the unfiltered Skaneateles Lake water supply, the City of Syracuse enjoys some of the *lowest water rates* in New York State and the nation.



Walter & Lucy Copeland	Robert Daubenspeck	Tim & Julie DiBagio	Forrest & Sara Earl	Rick & Cathy Fedrizzi	Jay & Karen FitzGerald	Mary Gardner	Garard & Francine Grannell
Patricia Coppe	Richard Dausman & Amy Tormey	David Dickinson	Guy & Nancy Easter	Holden & Karen Fenner	Paul & Erika Fiutak	Polly Gardner & Family	Joseph & Marie Grasso
Bob & Jane Corcoran	Jamie Davis	Dickman Farms	Patricia Eastman	Douglas B. & Carol Brewer Fenton	Robert Flannery	Paul Garrett	James & Emily Gregg
Michael & Carol Corcoran	Peter & Danette Davis	Greenhouse & Garden Center	Ecoscope Design	Gerald & Ann Ferro	Tom & Carol Fletcher	Adam Gasiorowski & Claudia Kosty	Holly Gregg & Patience Brewster
Mary Cotter	William & Donna Davis	Ed & Maggie Dienst	Elizabeth Edinger	Douglas & Jessica Fetterman	Ben Fliegel & Radhika Dewan	Dan Gastin & Annette Otis	Gregory Family
Anita Cottrell	Meagen Dean	Fouad & Michael Dietz	Edinger Family Lakehouse	Chris & Caitlin Fields	Floreck Families	Marjorie Gavin	Robert Gregory
Laurie Cottrell	Peter & Colleen Dean	Michael Dillon	D. W. & Marilyn Edington	Dave Figura & Laura Downs	Eleanor Follett	Eric Gebhard & Michelle Palenscar	Lance & Margaret Greve
Dan & Kathy Coughlin	Philip Dean	Joseph Dimento & Deborah Newquist	Eggleston & Krenzer Architects, Inc.	Thomas Filicia	Ray & Kimberly Forbes	Kyle & Liz Gebhart	Celeste Gudas
John Coughlin	Robert Dean & Virginia Calvert	Anthony & Suzanne DiNicola	Barbara Egtvedt	Anonymous 81	Steven Ford & Patricia Lynn-Ford	Wolfgang & Amandy Geihe	Lorraine Gudas
Michael Coughlin & Gretchen Geiger	William & Barbara Dean	Ronald & Janet Dippold	Carey Eidel	Bob & Beth Filiczowski	Diane Forney	James & Mary Fox	Sandra Hadley
Paul & Gail Cowley	Anonymous 31	Michael & Diane Dolcemascolo	Lorne & Gale Elder	Finger Lakes Chapter ACBS	James & Mary Fox	Anthony & Linda Geiss	Neb & Florie Hage
Dana & Dorothy Coye	JD & Mary Delmonico	Kevin Donnelly	Scott & Teri Elia	Finger Lakes Mechanical Sales & Service (Mike Foote)	Eugene & Tracy Franchini	Alex & Donna Giambartolomei	Hagen Family
Jim & Sharon Cross	Jed & Barbara Delmonico	Donohue Family Fund	Gregg & Meryl Eriksen	Finger Lakes Realty Partners (Jerry & Kathleen Morrissey)	Donald & Janet Frank	Charles & Jacqueline Giancola	Alan & Laurie Hahl
Robert & Rebecca Culbertson	Joel & Chris Delmonico	Anonymous 18	FJ Estlinbaum Barge & Crane	Fingerlakes Luxury Homes	Anonymous 46	Stephen Giglio	Richard & Lesia Haines
Bill & Jane Cummings	Matthew Delmonico	Vincent Dopulos & Christine Larsen	Elizabeth Etoll	Seth Fischer	Gianfranco & Johanna Frittelli	J Gilbane, III & Jeffrey M Towsey	Clayton & Patricia Hale
Maclaren & Rochelle Cummings	Patrick & Emma Delmonico	Gary Dower	Richard & Barbara Evans	Hamilton & Fran Rotunno Fish	Craig & Barbara Froelich	Dana & Susan Hall	Michael Hall
Brian & Christine Cunningham	Sean & Deanna Delmonico	Jane Downs	George & Mary Anne Drew-Evans	Daniel Fisher & Lori Ruhlman	Christine Fry	Ryan Hall	Douglas & Pamela Hamlin
Jim & Ceme Curley	Delmonico Insurance Agency	Judy Doyle	Lois Exner		Anonymous 68	William & Kimberly Gilberti	Allen Handelman & Barbara Cote
David & Lynne Curtin	Ralph DeMasi & Susan Scheuerman	Patrick Doyle & Elizabeth Downes	Anonymous 37		Kent & Linda Fuchs	Mary Giroux	Thomas & Jane Hanley
Susan Dailey	Merril & Paula Denslow	Charles & Kimberley Driscoll	Robert & Kathryn Fagliarone		Richard & Sarah Furlow	William & Marybeth Gleason	John & Kathy Hardy
John & Patricia Dale	John & Cynthia Desko	Anonymous 19	Fair Haven Enterprises Partnership (Kathleen Hudson)		Joseph & Mary Gaffney	Glen Cove LLC	Janice Hardy
Devin & Angela Daly	Sidney Devorsetz	David Duggan & Lynn Cleary	Anne Fairbanks		Robert & Louise Ganley	Joseph & Diana Goethe	Brian & Maureen Harkins
Patrick & Jessica Danial	Scott & Bethany DeWolf	Vic & Debbie Duniec	Michael & Nicole Falcone			Goetzmann Framily	Martin & Rosemary Harms
Steve Datz & Rachel Harms	Nicholas Diakow & Renee Laffer	Barbara Durr	Michael & Noreen Falcone			Goffe Cottage (Jack Moore & Gretchen Goffe)	Rich & Sheila Haswell
		Ellen Dusault	Patrick Fall & Margaret Clooney			Kevin & Sarah Goode	John Havemeyer
		Brad & Hannah Dusto	Paul & Patricia Fallon			Michael & Kathleen Gorr	Cheryl Hawkins
		Diane Dwire	Anonymous 24			Nancy Graham	David & Elizabeth Hayes & Anne Tracy
		David Dzielak	Farchione Family			Schuyler & Karen Graham	Kenneth & Barbara Hearst
		Thomas & Shirley Eagan				David Graham	

“

For many of us, clean water is so plentiful and readily available that we rarely, if ever, *pause to consider what life would be like without it.*”

- Marcus Samuelsson

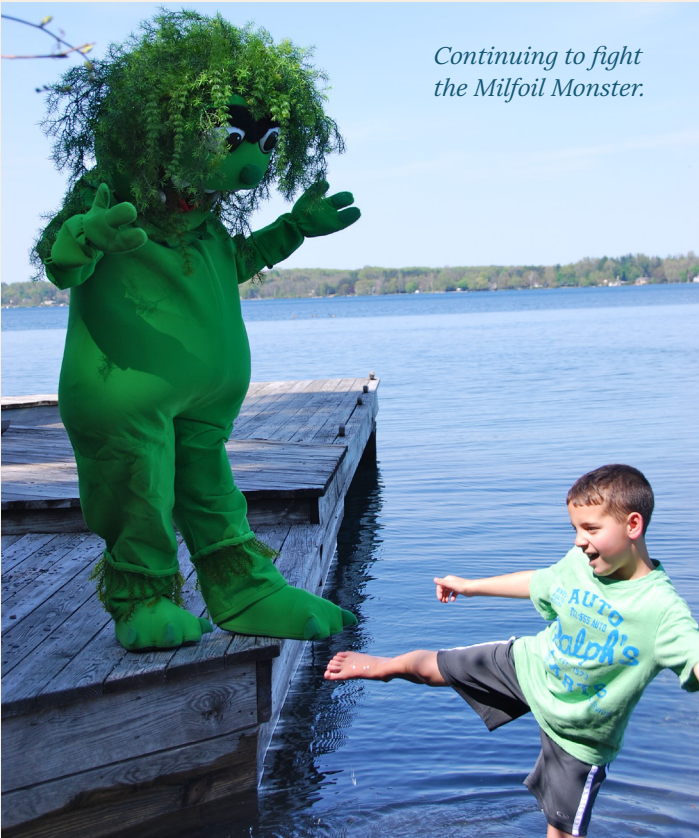


Bill & Lucienne Hecht
Anonymous 54
Edward & Janet Heinrich
James Helmer & Kathryn Pasqua
Sheila Hemami
David & Karen Hempson
Daniel Hennigan
Joe & Mary Ellen Hennigan
Richard & Joyce Herlihy
Hertig Family
Jim & Patty Hertz
Terry Cerquone Herzing
Eric & Leslie Heyer
Gary & Merrily Heyer
Philip & Judy Hider
Andrew & Alison Hider
James & Ann Higbee
Higgins Harbour Family
Donna Himelfarb
John Moss & Robin Hinchcliff
Gary & Deborah Hind
Kyle Hobart
Hobbit Hollow Farms
Donna Hogan
Sarah Holben
Thomas & Sandra Holbrook
Richard & Deborah Hole
Bob Honold
David Honold
Neal & Alice Houser
Jayne Howard
Robert & Claire Howard

Peter & Jane Hueber
Dorothea Hughes
Robert & Marcia Hunt
Richard Hurley
David & Ursula Hutton
Kenneth & Jeanne Hutton
Kenneth Hyde & Nellie Ramsden
Bill & Patricia Innerst
Peter Isler & Miriam Torres Brinkmann
Jim & Daisy Jacobs
Robert & Catherine Jamieson
Joan Jayne
Thomas & Gretchen Jeffers
Anonymous 71
Jermy Family
James & Emily Johnson
Tim Johnson
Chris Johnson & Jean Shook
Scott & Jolie Johnston
David & Beverly Jones
Robin & Joyce Jowaisas
Joseph Judge & Sheila Myers
Francis & Lauren Kaduc
Catherine Kane
David Kanter & Stacy Metcalf
Kathryn, Max & Isabella Karpinski
Mary Jacqueline Keady
Anonymous 80
Timothy Kelley

Emmett & Nicole Kelly
Margaret Kelly
Kelly Family
Bruce & Linda Kenan
Gregory Kenien & Mary Ellen Faughnan
Ginger Kenney
Darlene Kerr
David & Sherill Ketchum
Harry Kettmer & Martha Kendrick
Ann Kilian
Robert Kiltz
Christopher & Laura Kinder
Ted Kinder
Edward Kirk
Jeffrey Kirshner & Lorraine Rapp
Brian & Leisyl Kleinberg
Jordan & Olga Kligerman
Julia & Lori Klock

Lee Klosowski & Susanne Guske
Mary Knepper & Susan Mark
Michael Knoll & Lauren Steinfeld
Albert Knorr & Monica Bunkenburg Knorr
Edward & Lena Kochian
George & Dawn Kocsis
Mary Kokosa
Trevor & Emily Kolego
John & Wendy Kopley
Kay Kraatz
Richard & Shelly Kraetz
James & Kimball Kraus
Dorothy Krause
David & Alexa Krauter
Eric & Megan Krauter
Allan & Marion Krauter
Michael Krebs
Chris & Karen Kreidler
Jennifer Kreischer



John & Lynn Kreischer
Judith Krieger
Kris Tech Wire
Christopher & Fadia Kruse
Theodore & Joan Kuck
Gary Kuhns
Mark & Ellen Kulik
Max & Agnes Kunz
Raymond & Donna Kurlak
Wayne & Sue LaFrance
Daniel & Grace Labeille
Stephen Laffer
Kevin & Kathy LaGrow
Lake Country Construction & Contour (James & Kimberly Tracy)
Lake & Village Realty LLC (Michael Williams & Johan Visser)
Lakeview Auto & Marine (Bob, Terry & Rachael DeWiltt)
Don & Jill Lang
Marvin & Patti Langley
David & Joyce Larrison
Bob & Chris Latella
Steven & Hilde Lauber
Benjamin Lavery & Maura Swan
Linda Lavery
Lee Properties
William & Margaret Lee
Anonymous 50
Mark & Lisa Leesman
Chris Legg & Nancy Thomas

Lynn Lehihan
James Leonard & Patricia O'Shaughnessy
Anonymous 15
Robert & Betty Liegel
Lions Club of Skaneateles
Susan Littlehales
Littlefoot & Franklin Fund
The Local Branch
Cecelia Lockwood
Locust Lane Association
Joann Loftus
Joseph Logan
Thuan & Allison Loi
Dennis & Ashby Longwell
M. F. Loose
Roy & Carolyn Lootens
Eric Lorberfeld & Elizabeth Friedmann
Gard & K. C. Lorey
Gary & Mary Jane Lowery
Eloise Luchsinger
Lucky Dogs
James & Ellen Lutz
Christopher & Monica Lynch
Anne Lynn
Martin & Tara Lynn
M & T Bank
John MacAllister & Laurel Moranz
Clifford MacBroom & Lucille Solana
Jim & Wendy MacLachlan

Bob & Betsey Legg Madden
Brian & Jean Madigan
Anoymous 63
Robert & Diane Maguire
Bill & Miki Mahood
Charles Major
Michael Major
Mandana Barn (Tim & Heather Carroll)
John & Irene Manna
Chris Mandel & Kenneth & Catherine Maum
John & Peggy Manring
Justin A Marchuska II
David, Kristen & Mavenek Marks
Melissa Marquardt
Nancy Marquardt
William & Bridget Marquardt
John & Candace Marsellus
Mary Marshall
Todd & Jill Marshall
Ross Martin & Dr. Deborah Blazey-Martin
Fred & Virginia Marty
Mehdi & Kathie Marvasti
Ed Marx & Sherry Nichols
Sam & Sally Mason
Rodney & Andree Mastrosimone
Barry N. Maturevitz
Bill & Jennifer Mayo
Richard Mazzeo

William & Patricia McAvoy
Joseph McCaffrey & Jacqueline K. Bays
David & Norma McCarthy
Kevin & Kathryn McCarty
William & Cynthia McCauley
Steven & Stacey McClintic
Kevin & Frances McCormack
Margot McCormick
John McDevitt & Helen Tai
McDowell Family
Brenden McGinn & Rebecca Cohen
Edward & Charlene McGraw
Ben & Kayc McHone
Thomas & Lynne McKeown
John & Elizabeth McKinnell
Paul & Jennifer McKinnell
James & Dianne McLaughlin
Gardner & Lynn McLean
James McLennan
David & Meloney McMurry
Anonymous 53
John & Frances McNerney
Mark & Teresa McSwain
Matthew & Elaine Medwid

Larry & Lynne Meeske	Steve Mott	Sean & Laura O'Keefe	John & Pam Pidhirny	Jack & Linda Rade	Andrew & Kitty Robinson	Larry & Tracy Sala	Christopher & Carrie Scholz
Adam Meinstein & Odile Gelinard	David Muir	Charles O'Neil & Carolyn Legg	Gino & Susan Pietromonica	Raziur Rahman	Dan & Linda Roche	Mathew & Mary Ellen Salanger	Daniel & Mildred Schultz
Anonymous 11	Sandra Mulconry	Patricia Orr	Paul & Danielle Pimpinella	Thomas & Lisa Rainey	Karen Roche	Joseph & Alisa Salibra	Carolyn Schwab
John & Mary Menapace	Anne Munly	Joe Orsen & Jennifer Coughlin	Chris & Cathy Pinckney	Stephen & Elizabeth Ramsey	Chad & Kathleen Rogers	Elan & Anne Salzhauer	Mark & Misty Schwab
Greenville LLC	Cornelius & Joanne Murphy	Bill Osborne & Anne McArdle	Pine Bluff Homeowners Association	James & Lori Ranalli	Scott Rogers & Laura Michelman	Gregory & Catherine Sankey	Angelo & Margaret Scopelianos
Alan & Joyce Methelis	Dennis Murphy	John & Elizabeth O'Sullivan	The Pines	James & Heather Ranalli	Walter Rogers	Adele della Santina	Robert & Timothy Scott & Kathy Gentils
Richard & Victoria Meyer	Eileen Murphy	Richard & Anita O'Toole	Anonymous 48	Jack & Sharon Rappaport	Michael Rogus & Teresa Roche	Richard & Jill Sargent	Joseph & Julie Scuderi
Daniel & Kathleen Mezzalingua	Michael Murphy	Mark Overdyk & Joanie Mahoney	David Pittard	Derek Raymond & Catherine Blacker	Randy & Mary Rohrbeck	Charlie Saxon & Kim Dettor	Douglas & Darcy Sedgwick
John & Kimberly Mezzalingua	William & Anna Murphy	John & Sharon Paddock	Don & Maureen Plath	Anonymous 29	Rolands Men's & Boy's Wear	Anonymous 75	Mary Sennett
Michael DeRosa Exchange (Michael DeRosa & Kelly Ide)	Muscari Family Partnership	Joseph & Deborah Paduda	Trevor Plath	Joseph & Debbie Reagan	Joseph & Lynne Romano	Tony & Kelly Scalzo	Margaret Sennett
Andrew Middleton	Steve & Jen Musso	Daniel & Diane Pluff	Anonymous 77	Georgiana Rebhahn	Philip Romano	Anonymous 65	Aime Seymour
Mid Lakes Navigation	Kim A Myers	Peter & Diane Plumley	Julie Plochocki & Family	Sara Reckenwald	Mark Roney	Scheer Family	Alton & Shannon Shader
Dave & Paula Miller	Dr. & Mrs. David G. Nangle	Bud & Kathleen Poliquin	Daniel & Diane Pluff	Jack & Patty Reed	Richard & Romaine Rood	Steven & Kelly Scheinman	Shadowlawn Lakeshore Corporation
James Miller	Anna Nelson	Ray & Barb Poole	Peter & Diane Plumley	Stig & Inger Rehnmark	John & Laura Rooney	Ruth Schermerhorn	Shady Bend Land Corporation
Mary Ellen Miller	Michael & Eileen Nelson	Mont & Kate Pooley	Gregg & Ashley Palmer	Anonymous 9	Barbara Root	Paul Schoenhand & Nicole Jantzi	Shady Bend Corporation
Toby & Jessica Millman	Christopher & Amy Neumann	Nina Popow	Larry Palmieri	Patrick & Kuni Riccardi	Nicholas & Linda Rossi	Anne Hurley Scholl	Rahul Shah & Kelly Cummings
Jim & Lori Milne	Robert & Sara Neumann	Mark & Theresa Potenza	Jeff & Cheryl Palomaki	Tim Riccardi & Mary Swan	David & Susan Rossi	Kristopher Scholl	
Larry & Marty Minet	New Hope View Farm	Timothy & Linda Potter	David & Jan Panasci	Timothy & Elaine Rice	Anne Roth		
Steve & Jackie Miron	George & Jill Newton	Thomas & Camille Potter	Larry & Nan Pardee	Craig & Rhonda Richards	Thomas & Eileen Roth		
Scott Moe & Jennifer Tuozzolo	Robert Nichols & Katherine Sullivan	Tracy Prentice & Jill Austin	Michael & Carol Parker	Elmer Richards & Sons	Robert Rotondo		
Nigel & Christine Moll	Dr.& Mrs. R William Nichols, Jr.	John Priest & Lynne Boles	Thomas & Brenda Parkes	James Richardson	Arnold & Libby Rubinstein		
Caroline Moore	Richard & Alexandra Nicklas	Alex & Carol Protasiewicz	George & Sherry Parsons	Anonymous 72	Jeff Rudberg & Emily Gaffney		
James & Julie Moore	David & Shannon Nierenberg	Mihael & Kimberly Puc	John & Lynda Parsons	Richard Ridings	Rudnick Family		
Steven & Noreen Moore	Michael & Josn Niswender	James Pulaski	Peter & Ann Paullin	Jack Riley & Karen Yuhas	Lawrence & Janet Ruston		
W. Brewster Morris	Lenny Nocilly	John & Helen Purcell	Jordan & Melissa Pavlus	Dan & Lisa Riordan	Ed & Pam Ryan		
Jerry & Kathleen Morrissey	Sharon O'Connell	Steven Purcell	Anonymous 49	Forest & Sally Rittgers	Jeff & Carrie Ryan		
Mary Morrissey	Anonymous 66	Jerry & Alice Purdy	Judith Pearsall	John & Diane Rizzo	M Marlene Ryan		
Richard Morse & Claudine Labeille	Pat & Cathy O'Connor	Barry & Amy Quinn	Pennisi/Kelly Family	William & Gretchen Roberts	Travis & Kate Ryan		
Randall Mott	Michael & Pamela Odium	Ian & Kary Raddant	Pennock Pines, Inc.	Jeff Roberts & Carol Lynne Krumhansl	Ryu Family		
			Jason & Kim Persse	Judy Robertson	Eugene & Donna Sabini		
			Joseph A. Phillips				
			Todd & Molly Phillips				



Gerard & Virginia Shanley	Anonymous 23A	Peter & Elsa Soderberg	James & Kiki Strodel	George Thomas & Patty Wiese	Via Mondo Travel & Wellenss (Rosemary Mondo)	Geoffrey & Gina Wickwire	Sara Wingerath-Schlanger
Carol Shannon	Skaneateles Marina (John Cherundolo)	James & Susan Solomon	Neil & Christine Strodel	Bruce & Kathryn Thompson	John & Jean Vincent	John & Linda Wickwire	Dwight W. Winkelman Foundation, Inc.
Oleg & Anna Shapiro	Skaneateles Psychology Associates	Robert & Betsy Solsky	Kara Strods	Genevieve Thompson	James & Racquel Vlassis	2673 Widewaters LLC	Lilli & Christy Winkelman
Rich & Paula Hardy Sharkey	Skaneateles Rotary Foundation, Inc	Songer Family	Sal & Hope Strods	Mya Thompson	Demetra Vounas	Duane & Denise Wiedor	Thomas Wise
Liz Sharp	Skaneateles Sailing Club, Inc.	Sons of the American Legion Squad 239	Salvin & Anita Strods	Three Birds Properties	Ben & Eleanor Ware	Amy Wiles	Donald & Kendra Witter
Anonymous 86	Skaneateles Sunrise Rotary Club	434 Spafford Landing LLC	William & Sara Strong	Nancy Tiedemann	Robert Warfield & Alison Smith	David & Leanne Willard	Howard Wolhandler & Karen Lawitts
Steven Shehadi	Skaneateles Town Square (Jeffrey & Kate Youle)	John & Barbara Spain	Dan & Mary Pat Suits	James & Deborah Tifft	Bill & Jen Warning	Charles & Nancy Williams	Patricia Woodcock
John & Susan Shehadi	Skaneateles Volunteer Fire Department	Bill & Molly Spalding	Walter & Kathleen Sullivan	Michael & Judith Timmins	Dianne Washington	David & Marilee Williams	Duncan Wormer & Barbara Benedict
James & Carol Sheldon	Skaneateles Winding Way Association	Curtis & Patrice Spalding	Donald & Chacea Sundman	Laurie Timmons	Robert Waters & Linda Pietroski	David & Mary Jean Williams	Priscilla Sandford Worral
Philip Shepard	Henry & Jeannie Slauson	Jay Spalding & Irene Gonin	Douglas Sutherland	Julia Torrisi	Gay Wayne	Robert & Anne Williams	Warren & Susan Wulff
David Sheppard	Slottje Family	Ted Spencer	Jennifer Sutherland	Paul & Meredith Torrisi	John & Susan Weir	Ryan Williams & Linda Ahern	Robert & Leslie Wurzburger
Sherwood Inn/Bill Eberhardt	Tom & Bettina Smallman	Thomas & Martha Squire	John & Margaret Sutton	Margaret Tourville	Lawrence & Katharine Weiss	Mathew & Lisa Wilsey	Mike & Denise Yakutchik
Christopher Short & Abigail Duggan	Mona Smart	Carolyn Stafford	John & Anne Sveen	Jacob & Brandy Tracy	Joshua & Allison Wells	Joseph & Maureen Wilson	Michael & Vanessa Yates
Anonymous 23	Smiles of Skaneateles	Wolfram & Elena Stahl	Anonymous 36	Ralph & Patricia Troisi	Anonymous 78	Window Attire (Diana & Richard O'Brien)	Bruce & Katherine Yenny
Charles Sieving & Alison Beimler	Bolt & Barbara Bolton-Smith	Jeffrey & Virginia Stannard	John & Desiree Swygert	Anonymous 56	Jo Werner	Don & Mary Anne Winfield	Gary & Duane Zdan
Nicholas & Cynthia Signorelli	Doug & Bev Smith	Chad & Diane Steckel	Frank & Mary Szczech	Daniel & Susan Troup	2 West Lake Street (Clark Maher)	Fred & Mary Wingerath	Judy Zdep
Korinne Silverman	Glenn & Jane Melrose Smith	Andrew & Catherine Stephens	John Szczech	Stuart Trust	Thomas & Judith West	John Steele Wingerath	
Gregory& Maria Simmons	Kevin Smith	LaDorna Stephens	Edward & Christine Szemis	Roy & Jackie Truswell	West Side Lake Association		
Harvey & Doreen Simmons	Linda M. Smith & Family	Anonymous 59	Thomas & Sherry Sziosek	Mary Tucker	Michael & Lisa Wetzel		
Keith & Helen Simonelli	Lucinda Smith	John & Nancy Sternfeld	Richard & Joan Tackley	Carl Tucker	David & Heather Wheat		
Anonymous 76	Richard & Carolyn Smith	Charles & Pamela Stewart	Ben & Kathleen Tarantino	Jaime L Tuozzolo	Paula White		
Kevin & Betsy Sio	Thomas & Susan Smith	Jim Stoddard	Gene & Joan Tarolli	James & Salli Tuozzolo	Peter White & Mary Socci		
Skaneateles Central School Environmental Club	Blair Soars & Susan Birchenough	Eric Stohrer & Gail Calcagnino	Jim & Dannie Taylor	Michael Tutor & Susan Keefe	White & White Antiques (Steve & Bev White)		
Skaneateles Country Club	Peer & Maureen Soderberg	William & Carol Stokes-Cawley	John Teixeira Family	Twin Birch Dairy (Dirk & Karen Young)	Whitegate Homeowners Association		
Skaneateles Festival		Janet Stokoe & Michael Stokoe	Anonymous 88	Thomas & Leah Valenti	Douglas & Margaret Whitehouse		
Skaneateles Garden Club		David & Patricia Stone	Ten Mile Point South Cottage Homeowners Association	Guido & Nancy van der Ven	Andrew Whiting & Roberta Ripberger		
Skaneateles Holdings (Judd Seales)		Mike & Renee Strangeway	Philip & Diane Tennant	Sara Van Norstrand			
			Nancy Testani	John & Judy Varney			
			George & Lucille Teufel	Vermont Green Mountain Specialty Company			
			Bruce & Patti Texeira				
			Seth & Lynn Thibault				

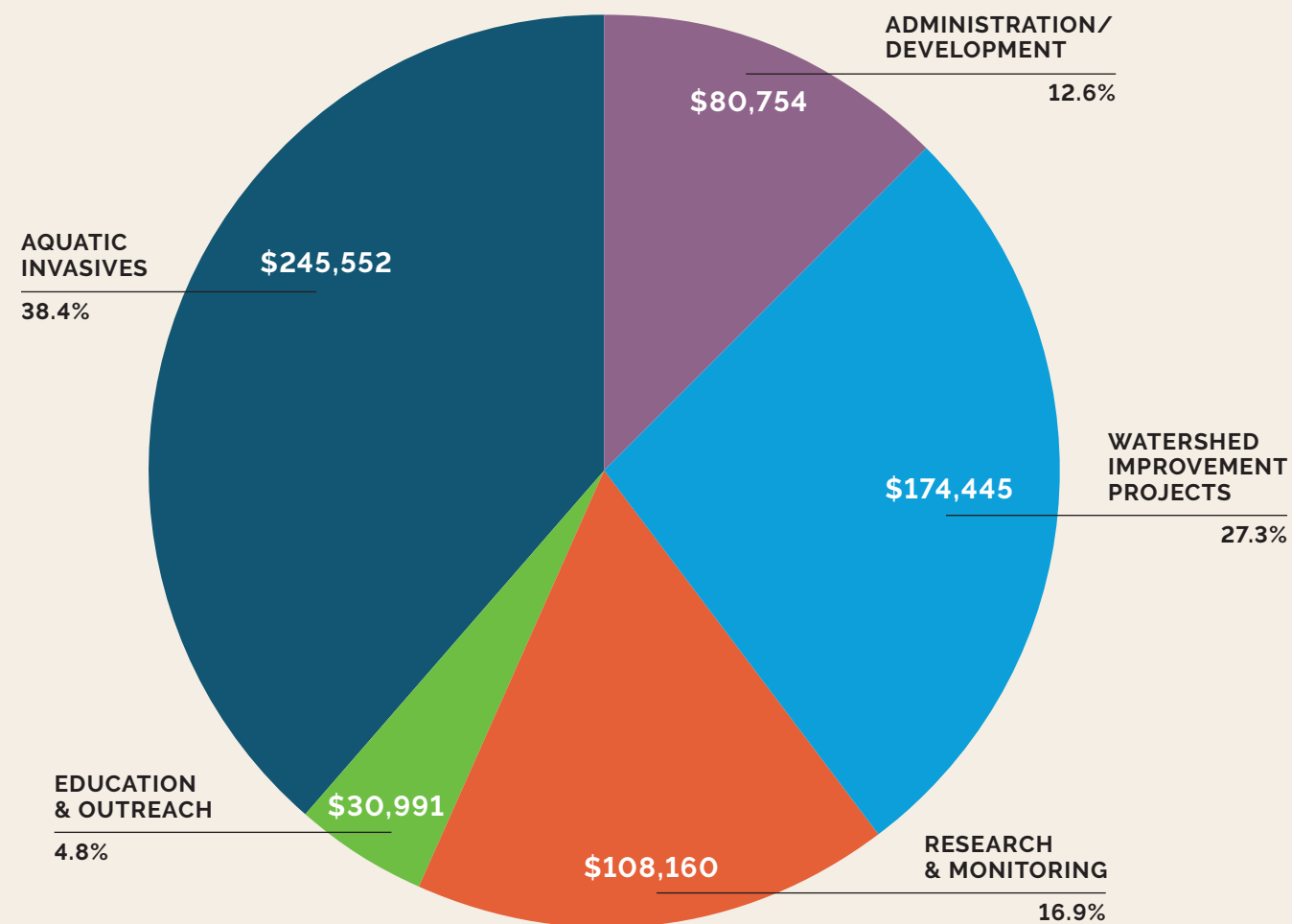
In addition to these members, the Skaneateles Lake Association receives sustaining support from Onondaga County, gratis slips for the Milfoil Team boats from the Skaneateles Marina and a gratis mooring for the Dr. Robert Werner Research & Education Boat from the Skaneateles Country Club.



SLA is supported primarily by the *renewal of annual memberships.*

SKANEATELES LAKE ASSOCIATION - 2022 MEMBERSHIP & LEGACY FUND EXPENSES

Combined Total - \$639,902



87% directly dedicated *toward lake preservation and protection!*

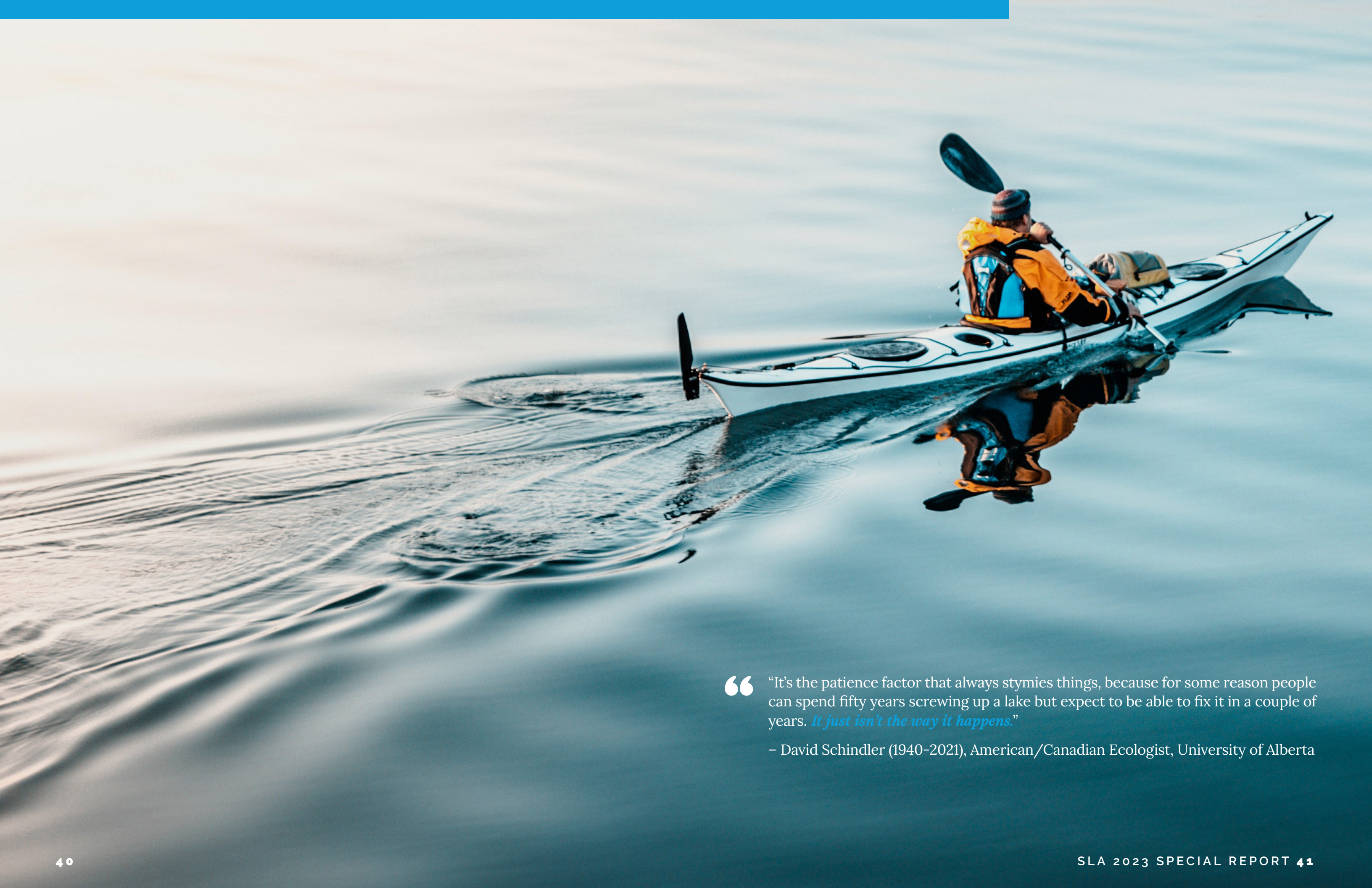
It Takes A Team To Keep Our Lake Clear And Pure

Congratulations! You have reached the exciting conclusion of the first of many SLA special reports detailing our efforts to protect Skaneateles Lake. The SLA Board of Directors shares this 2023 Special Report with you to deliver a detailed understanding of our progress to date, a view of the many challenges ahead and a clear vision for our future efforts.

With your support the SLA is ushering in a new era of breakthrough initiatives that give everyone a role to play at this most critical time for Skaneateles Lake. Supporting SLA through membership and the SLA Legacy Fund is one of the most profound commitments you can make to ensure a clear and pure future for Skaneateles Lake. This investment not only helps to protect and preserve the lake for future generations; it protects the very investments we have all made in the lake in properties and the local community economies.

The clear and pure water of Skaneateles Lake is literally the lifeblood of the Skaneateles community as well as the City of Syracuse and other CNY communities as a drinking water source. Skaneateles Lake is seen by many as the crown jewel among the Finger Lakes. Crystal clear, pristine and pure, one of the last sources of unfiltered drinking water remaining in the nation. It is a haven. It is a recreational gem. It is a natural wonder. It is a lifetime of memories. It is an economic engine. Quite simply, it is worth protecting. The work is before us, we know what needs to be done, join the team and make a smart investment in the future of our lake.





“It’s the patience factor that always stymies things, because for some reason people can spend fifty years screwing up a lake but expect to be able to fix it in a couple of years. *It just isn’t the way it happens.*”

– David Schindler (1940–2021), American/Canadian Ecologist, University of Alberta



JUMP IN AND JOIN

skaneateleslake.org

