



*Skaneateles Lake Association*

2023 **SPECIAL**  
**REPORT**

PROTECTING + PRESERVING  
SKANEATELES LAKE



# Skaneateles Lake IS YOUR LAKE

Whether you live on it, play in it, look at it or drink from it, Skaneateles Lake is your lake. And you can help keep it pristine. There is only one organization solely dedicated to keeping Skaneateles Lake clear and pure. The Skaneateles Lake Association.

Our mission is to promote the protection of the water quality of Skaneateles Lake and environmentally sound regional management of its watershed. We offer unique programs, projects, approaches and collaborations that help make that a reality.

## TABLE OF CONTENTS

Message from Our Board of Directors	4-5
Advisory Council and Science Advisors	6-7
Lake Ecology Team	8-9
SLA Overview, Initiatives, and Funding Sources	10-13
Legacy Fund Programs & Expenditures First 5 Years	14-15
Legacy Fund Lake Protection Plan & Costs Next 5 Years	16-17
Legacy Fund Financial Supporters	18-23
Research and Education Boat and Financial Supporters	24-25
Membership Fund Programs	26-27
SLA Members	28-37
SLA 2022 Financial Summary	38
Closing	39-41

Your support for the SLA Membership Fund and Legacy Fund makes programs & projects possible that keep Skaneateles Lake *clear and pure*.



# A Message from OUR BOARD

Dear SLA Supporters,

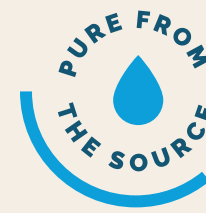
*Thank you for all you do for Skaneateles Lake.*

We are pleased to share this Special Report detailing continuing efforts to protect and preserve Skaneateles Lake. The threats to our clear and pure lake have grown substantially, but progress to address them has grown exponentially.

We are more encouraged than ever about the future of the lake and its watershed communities. The annually renewed support received for both the SLA Membership Fund and the SLA Legacy Fund is what makes this progress possible.

Skaneateles Lake is seen by many as a crystal-clear pristine jewel among the Finger Lakes. Recognized as one of the clearest and purest lakes in the nation, it is one of only a small handful of water bodies in the U.S. that is so clear that it provides **unfiltered drinking water** to over 200,000 people in the City of Syracuse and other surrounding communities. But the pristine status of our lake is under siege as never before with an unprecedented myriad of threats compromising the water quality of the lake, including:

- HABs (Harmful Algal Blooms) from increasing storm runoff and nutrient pollution
- HABs from increasing lake water temperatures
- HABs from invasive Hemlock Woolly Adelgid infestation killing the vital hemlock forests in the watershed causing soil erosion and increasing tributary water temperatures
- HABs from both agricultural and residential nutrient loading
- HABs intensified by invasive species such as zebra & quagga mussels, Eurasian watermilfoil, and others



Skaneateles Lake provides **unfiltered** drinking water to over **200,000 people** in the City of Syracuse and surrounding communities.



Please continue renewing your annual dues/donations to the **SLA Membership Fund** which has provided most of the support for fighting invasive species through the Milfoil Control Project since 2007, and Watercraft Stewardship/Inspection at the boat launches since 2012.

In addition, give generously to the **SLA Legacy Fund** (est. 2018) which has become so essential to sponsoring science-driven decision making, community outreach/education, and improving our watershed infrastructure in combating Harmful Algal Blooms.

Protecting Skaneateles Lake for the long term will require watershed-wide collaboration and a personal commitment from everyone who loves the lake. We know our community and the entire Central NY region is ready and willing to face this challenge. Your Skaneateles Lake Association is poised to help lead the way with your continued strong support. Thank you again for your continued commitment to Skaneateles Lake!

Sincerely,

The SLA Board of Directors

**Paul F. Torrissi, MD**  
President  
Co-Chair Legacy Fund

**Buzz Roberts, MD**  
Vice President  
Co-Chair Lake Ecology Team

**Richard D. Hole, Esq.**  
Treasurer  
Chair Finance Committee  
Chair Inter-Municipal Relations

**David Allyn**

**William Dean, PhD**  
Co-Chair Lake Ecology Team

**Bill Hecht**

**Jed Delmonico**

**J.D. Delmonico, MBA**

**Robert DeWitt**

**Charles Driscoll, PhD**

**Fran Rotunno Fish, RN, MS**  
Chair Membership Fund  
Co-Chair Legacy Fund

**Joe Grasso, MILR**

**Dana Hall, PhD**  
Chair Watershed  
Improvement Projects

**Brian Harkins, MBA**

**Deborah M. Hole, MLS**

**Elizabeth Liddy, PhD**

**Robert Liegel, Esq.**

**Neil Murphy, PhD**

**Patricia Orr**

**Kim Persse**

**Peter Plumley, PhD**

**Kate Ryan**

**James Tift, MD**  
Chair Community Outreach &  
Education

**Frank Moses**  
Executive Director



Harmful Algal Blooms (HABs) indicate environmental changes *not only in the water but on land*, particularly runoff containing excess phosphorus and nitrogen nutrients.

## SLA ADVISORY COUNCIL

The Advisory Council is comprised primarily of community members whose role is to advise the SLA Board on a variety of issues related to protecting Skaneateles Lake and its watershed.

**Eric Allyn**  
Community Leader

**Deborah Bobbett**  
Well Balanced Studio Co-Owner

**Dave Birchenough**  
Member of SLA Legacy Fund  
Appeal Committee

**John Cohan**  
Margaritaville, Inc. CEO

**Mac Cummings**  
Terakeet CEO & Reputation.com  
Chairman

**Ben Eberhardt**  
MidLakes Navigation Director of  
Operations

**Michael Hearn**  
Genesee Capital Advisors

**Linda LeMura, PhD**  
LeMoyne College President

**Joanie Mahoney**  
SUNY-ESF President

**Dave Matthews, PhD**  
Upstate Freshwater Institute  
Executive Director

**Mike McMahon**  
SLWAP Board Chairman  
& Agribusiness Leader

**Jessica Millman**  
Soderberg Charitable  
Foundation Executive Director

**Jerry Morrissey**  
Finger Lakes Realty Partners

**Andy Robinson**  
Newhouse School of  
Communications (retired)

**Sam Rowser**  
OnPoint for College  
Executive Director

**Maureen Soderberg, MD**  
Community Leader

**Simon Solomon**  
CNY Land Trust  
Executive Director

**Paul Torrisi, Jr.**  
Morgan Stanley Armory Group  
Senior VP

**Jim Tuozzolo**  
Pyramid Companies Partner

**Andy Zepp**  
Finger Lakes Land Trust  
Executive Director

## SLA COUNCIL OF SCIENCE ADVISORS

Helping to promote science driven solutions.

**Bill Dean, PhD**  
SLA Board Member & Lake Ecology Team  
Co-Chair

**Buzz Roberts, MD**  
SLA Board VP & Lake Ecology Team  
Co-Chair

**Dana Hall, PhD**  
SLA Board Member & Watershed  
Improvement Projects Sub-committee  
Chair

**Charley Driscoll, PhD**  
SLA Board Member  
& Syracuse University Professor

**Neil Murphy, PhD**  
SLA Board Member  
& SUNY-ESF Professor

**Jim Tift, MD**  
SLA Board Member

**Paul Torrisi, MD**  
SLA Board President

**Bahram Salehi, PhD**  
SUNY-ESF - Salehi GeoLab Professor

**Chris Scholz, PhD**  
Syracuse University Professor of  
Paleolimnology and Rift Basin Evolution

**David Matthews, PhD**  
9E Plan Modeling Team Member &  
Upstate Freshwater Institute Director

**Greg Boyer, PhD**  
SUNY-ESF Professor of Chemistry

**Donald Leopold, PhD**  
SUNY-ESF Restoration Science Center  
Co-Director

**Aimee Clinkhammer**  
Watershed Coordinator at NYSDEC  
Finger Lakes Water Hub

**Frank Moses**  
SLA Executive Director

## SLA LAKE ECOLOGY TEAM

Key Stakeholders, government and NGOs alike, working together toward a common goal.

### SLA BOARD MEMBERS & STAFF

**Bill Dean, PhD**

SLA Board Member & Lake Ecology Team Co-Chair

**Buzz Roberts, MD**

SLA Board VP & Lake Ecology Team Co-Chair

**Dana Hall, PhD**

SLA Board Member & Watershed Improvement Projects Sub-committee Chair

**JD Delmonico**

SLA Board Member

**Bob DeWitt**

SLA Board Member & Town of Niles Planning Board Chair

**Charley Driscoll, PhD**

SLA Board Member & Syracuse University Professor

**Fran Fish**

SLA Board Member

**Joe Grasso**

SLA Board Secretary

**Rich Hole**

SLA Board Treasurer

**Neil Murphy, PhD**

SLA Board Member & SUNY-ESF Professor

**Kim Persse**

SLA Board Member & Village of Skaneateles Environmental Advisory Committee Chair

**Jim Tift, MD**

SLA Board Member

**Paul Torrisi, MD**

SLA Board President

**Frank Moses**

SLA Executive Director

### ELECTED OFFICIALS

**Hon. Janet Aaron**

Town of Skaneateles Supervisor

**Hon. Mary Sennett**

Village of Skaneateles Mayor

**Hon. Joan Jayne**

Town of Niles Supervisor

**Hon. Louis Martin**

Town of Scott Supervisor

**Hon. Chris Kozub**

Town of Spafford Supervisor

**Hon. Ben Walsh**

City of Syracuse Mayor

**Hon. Julie Abbott**

Onondaga County District 6 Legislator

**Hon. John Lemondes**

NYS Legislator for Assembly District 126

**Hon. Jeff Gallahan**

NYS Legislator for Assembly District 131

**Hon. Rachel May**

NYS Senator for Senate District 48

**Hon. Lea Webb**

NYS Senator for Senate District 52

**Hon. Brandon Williams**

22nd US Congressional District Representative

### GOVERNMENT REPRESENTATIVES

**Jim Greenfield**

Town of Skaneateles Deputy Supervisor

**Aimee Clinkhammer**

New York State Department of Environmental Conservation Finger Lakes Hub Watershed Coordinator

**Rich Abbott**

City of Syracuse Water Department Watershed Quality Coordinator

**Greg Loh**

City of Syracuse Chief Policy Officer

**Mike Plochocki**

Onondaga County Director of Water Quality Initiatives

**Mark Burger**

Onondaga County Soil & Water Conservation District Executive Director & Skaneateles Lake Watershed Agricultural Program Manager

**Doug Kierst**

Cayuga County Soil & Water Conservation District - Executive Director

**Kathy McGrath**

Cortland County Soil & Water Conservations District - Water Quality Specialist

### WATERSHED ADVISORS AND CONSULTANTS

**Aaron McKeon**

CNY Regional Planning & Development Board - Program Manager

**Max Heitner**

Finger Lakes Land Trust Director of Conservation

**Simon Solomon**

CNY Land Trust - Executive Director

**Olivia Green**

The Nature Conservancy - Finger Lakes Water Quality Specialist

**Camille Marcotte**

Cornell Cooperative Extension Water & Ecology Educator

**Brandeis Nevelidine**

SUNY-ESF Restoration Science Center - Development & Program Leader

**Sam Quinn**

SUNY-ESF Restoration Science Center - Research Assistant & Instructor

**Bahram Salehi, PhD**

SUNY-ESF - Salehi GeoLab Professor

**Chris Scholz, PhD**

Syracuse University Professor of Paleolimnology and Rift Basin Evolution

**Richard Wiles**

Environmental Consultant

**Brian Madigan**

Environmental Consultant

**Mike McMahon**

EZ Acres Farm Owner

**Tim Johnson**

Anchor QEA Partner & Principal Scientist

**Liz Moran**

9E Plan Consultant for Ramboll via EcoLogic

**Tony Eallonardo, PhD**

9E Plan Modeling Team Member & Ramboll Technical Manager

**David Matthews, PhD**

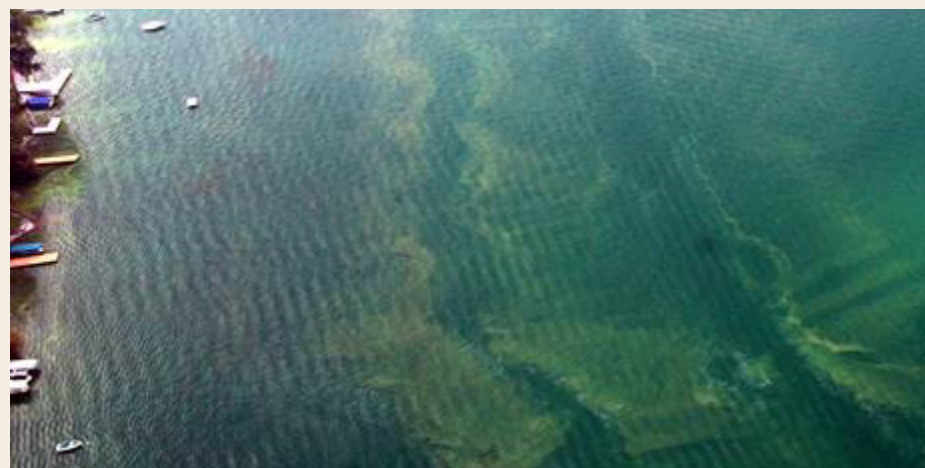
9E Plan Modeling Team Member & Upstate Freshwater Institute Director

**Aimee Clinkhammer**

Watershed Coordinator at NYSDEC Finger Lakes Water Hub

**Rob Bellinger**

Water Technologist Consultant



*The Harmful Algal Bloom (HAB) seen around our lake from 2017 Lakewide Bloom. HABs caused by excess nitrogen and phosphorus threaten drinking water purity, recreational use, tourism and property values.*

GET TO KNOW THE...

## Skaneateles Lake Association (SLA)

# CLEAR LAKE. PURE WATER.

Since 2007, SLA has conducted *the most robust, continuous effort* of milfoil control in the Finger Lakes.

Let's get a minor point of confusion out of the way. Here is what we are not. The Skaneateles Lake Association is not a traditional lake association comprised of lake front property owners. That couldn't be further from the truth. We represent anyone and everyone that has an interest in a clear and pure Skaneateles Lake and deliver innovative programs, projects, approaches and collaborations that help make that a reality.

### THE VERY REAL THREATS FACING SKANEATELES LAKE

Skaneateles Lake is seen by many as a crystal clear, pristine jewel among the Finger Lakes. Recognized as one of the cleanest and clearest lakes in the nation, Skaneateles is one of a small handful of water bodies in the U.S. that is so clean that it provides unfiltered drinking water to a metropolitan community. But the pristine status of our lake is under siege as never before with an unprecedented myriad of threats compromising the ecology and long-term quality of the lake, including among others:

- Harmful algal blooms
- Eurasian watermilfoil proliferation
- Hydrilla invasion threat
- Soil erosion & lake siltation
- Unabated storm runoff
- Increased nutrient pollution
- Watershed flora threats
- Faulty septic & pollution sources

While the challenges are complex, what we do is very straightforward. The SLA pursues projects, research, programs and communications that help to either eliminate or mitigate these risks. Whatever is in the best interests of the lake is a top priority for the SLA.



**EURASIAN WATERMILFOIL**



**HARMFUL ALGAL BLOOMS**



**HEMLOCK WOOLLY ADELGID**



**SOIL EROSION / LAKE SILTATION**

## How SLA Initiatives Are Funded

### FUNDING SOURCES

### PROGRAMS & ACTIVITIES

#### Membership Fund

- Invasive Species: Milfoil Control**
  - Milfoil Removal Program
- Aquatic Invasive Species Prevention**
  - Watercraft Launch Stewardship

#### Legacy Fund

- Watershed Improvement Projects**
  - Stream Improvement Projects
  - Runoff & Erosion HOA Projects
  - Hemlock Forest Protection Program
  - Grant Seed Funding Projects
  - Partnering with ESF-Restoration Science Center
- Research & Monitoring**
  - Harmful Algal Bloom Monitoring & Response
  - Stream Monitoring
  - In-Lake Monitoring
  - Watershed Monitoring
- Community Education & Outreach**
  - Emerging Watershed Scientists Program
  - Lake Friendly Living Program
  - ESF-Restoration Science Center Community Education
  - Community Forums
- Research & Education Boat - The BOB**
  - Milfoil-Macrophyte Surveying
  - ESF Satellite Learning - Water Clarity Project
  - SU Lake Sediment Core Sampling
  - Harmful Algal Bloom Monitoring
  - Citizen Statewide Lake Assessment Program
  - On The Water Education Program

**SLA LEGACY FUND:***Investing In A Clear, Pure Future***YOUR LAKE. YOUR LEGACY. OUR MISSION.****AN INVESTMENT IN THE FUTURE OF OUR LAKE**

The SLA Legacy Fund was established in 2018 in response to the 2017 crisis of a lake-wide Harmful Algal Bloom (HAB) that turned the entire lake green with the potential for producing harmful toxins to both animals and humans. This crisis prompted development of SLA's Harmful Algal Bloom Response Plan. The four pillars of the plan focus on:

- Lake Ecology Team
- Education & Community Outreach
- Establishing Watershed Wide Governance
- Fund Development For Watershed Improvement Projects

The SLA Legacy Fund Lake Protection Plan is focused on directly addressing many of the greatest threats to the quality of our lake and funds the people, projects and progress that will keep Skaneateles Lake amongst the cleanest in the country. These plans fall into three primary categories of Watershed Improvement Projects, Research & Monitoring and Community Outreach & Education.

In the case of Skaneateles Lake, an ounce of prevention can be worth millions and millions of dollars and avert long-term irreversible damage to the ecosystem. An investment in the SLA Legacy Fund offers a multiplying effect that can deliver more than an ounce of prevention.

“So, how do we prevent blooms? The only thing we can do is nutrients. This is why there is a big focus on preventing nutrients from coming into the lake.”

- Dr. Greg Boyer, SUNY ESF

**SLA LEGACY FUND  
LAKE PROTECTION  
PLAN:**
**1**
 Watershed  
Improvement  
Projects
**2**
 Research &  
Monitoring
**3**
 Community  
Outreach &  
Education

**SLA LEGACY FUND  
EXPENDITURES AT WORK**

**\$828,018**

*First 5 Years*

2018-2023

**\$390,459**

**WATERSHED IMPROVEMENT  
PROJECTS**

**\$362,270**

**RESEARCH & MONITORING**

**\$75,289**

**COMMUNITY OUTREACH  
& EDUCATION**

*Projects Designed to Fight Algal Blooms*

- Projects aimed at reducing excess nutrients from entering Skaneateles Lake
- Stormwater runoff protection buffer projects working with landowners, community partners, and scout groups
- Ditch improvement project with shared private road community and Soil & Water Conservation District
- Support of expertise from engineering consultants at Anchor QEA in development of improvement project program
- Dowling Creek Stream Stabilization Project with US Fish & Wildlife Service, the Nature Conservancy, SUNY ESF, Anchor QEA Engineers, and SCC
- Upper Willow Creek water control structure and detention basin improvement with local landowner and Anchor QEA Engineers
- Lower Willow Creek Sediment Reduction project leveraging SLA Legacy Fund investment with landowner and grant support from Great Lakes Commission Program
- Leveraging survey and project design support for additional investment from Onondaga County for shared private road community lake protection project
- Protection of Hemlock Trees in ravines and steep shorelines to help retain soil from washing into lake

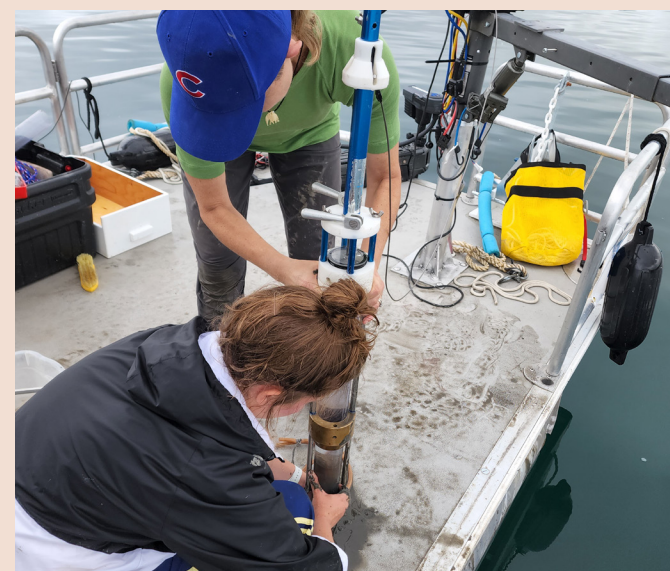


*Capturing sediment and stabilizing Willow Creek at key locations while Leveraging Legacy Fund Investments with landowner cost-sharing, in-kind services from businesses like Brillo Excavation, and garnering federal dollars through the Great Lakes Commission. Willow Creek was given high priority due to its location being south of one of the City of Syracuse's drinking water intake pipes combined with a history of sediment loading and small algal blooms at the mouth of the stream.*

↑ *SLA's inaugural collaborative Watershed Improvement Project, Dowling Creek, included The Nature Conservancy, who provided staff to develop initial designs with the US Fish & Wildlife; Anchor QEA Engineers, who helped finalize designs; SUNY-ESF, who provided expertise and plants to enhance the stream habitat; and the site host, the Skaneateles Country Club who, along with SLA, provided staff and financial support for the project.*

*Data Driving Decisions in Lake Protection*

- Funded stream analysis by Upstate Freshwater Institute used to establish Nine Element Plan
- Syracuse University (SU) stream analysis
- SU Precipitation & associated nutrient loading studies
- SU lake bottom sediment sampling
- Bloom Optix Drone studies on stream nutrient loading
- SUNY ESF Satellite Artificial Intelligence and Machine Learning for measurement of lake clarity
- SUNY ESF eDNA studies in sourcing of nutrient in stormwater and watercourses
- Supporting boat pilot to facilitate on lake research



*Inspiring and Empowering Lake Stewardship*



*Skaneateles Lake Emerging Watershed Scientists - City of Syracuse students learn about drinking water stewardship as Anchor QEA Principal Tim Johnson showcases engineering and design of watershed improvement projects as a solution for improving water quality.*

- Skaneateles Lake Emerging Watershed Scientists
- Lake Friendly Living initiative
- Landowner consultation
- Community education presentations
- Landscaping Workshops



*Lake bottom sediment core sampling research by SU supported by SLA Legacy Fund to better understand nutrients feeding Harmful Algal Blooms.*



## SLA LEGACY FUND AT WORK

## 5 Year Lake Protection Plan

2023-2027

## GOAL

\$4,000,000

\$2,750,000

WATERSHED IMPROVEMENT  
PROJECTS*Projects Designed to  
Fight Algal Blooms*

SLA's watershed improvement action plan for 2023 is budgeted just under \$300K, but will continue to be an area of increased investment for years to come.

The plan will cover core lake protection programs including:

- 2 main improvement projects in 2023 with increase in capacity to take on more projects
- Grants for shared private road communities enhancing watercourses
- Continuation of Hemlock tree protection
- Investment into ESF's Restoration Science Center land stewardship
- Establishment of a maintenance fund to subsidize landowner cost to ensure lake protection project integrity over time

With an increase of watershed wide planning, surmounting threats from more intense rain events, the need to sustain improvement project integrity, and identification of more problem areas requiring solutions in nutrient reduction and resilience, SLA will be garnering with the community \$2.75 million to invest back into the lake and its watershed over the next 5 years.

\$350,000

## RESEARCH &amp; MONITORING

*Data Driving  
Decisions in Lake  
Protection*

Investments in research will continue to:

- Support science that aids in prioritizing projects that help reduce nutrient loading and maintain integrity of aquatic life.
- Evaluate the effectiveness of programs & projects
- Pilot studies on emerging technologies and strategies designed for lake protection
- Continued research in support of monitoring:
  - in-lake water quality
  - stream stability
  - watershed integrity, and
  - impact from invasive species

NYS DEC, SUNY-ESF, Syracuse University, Finger Lakes Institute and other academic institutions and research groups with input from science advisors will be at the forefront.

\$600,000

COMMUNITY OUTREACH  
& EDUCATION*Inspiring and  
Empowering Lake  
Stewardship*

SLA is targeting an investment of \$500,000 over the next 5 years to grow our community outreach & education initiatives. Activities and programs will include, but are not limited to:

- Advancement of the Skaneateles Lake Emerging Watershed Scientists (SLEWS) program to connect students with ongoing research and associated careers in water protection
- Development of a digital guide to Lake Friendly Living with continued workshops and impact events
- Bolstering of lake protection awareness campaigns and education lecture and forums
- Support of communications and engagement with Executive Director and Community Engagement Coordinator
- Investment in community education through ESF Restoration Science Center programs

SLA's community engagement plan for 2023 alone with investment in SLEWS, Lake Friendly Living, ESF Restoration Science Center, Dr. Robert Werner Research & Education efforts, staffing, and additional initiatives totals over \$100,000.

\$300,000

## CAPITAL RESERVE FUND

*Investing in Lake  
Protection Hardware*

Establishing a reserve for capital costs through SLA's Legacy Fund will allow for responsible growth to maintain and replace critical equipment necessary for lake protection operations.

SLA anticipates the need for a \$300K fund over 5 years to support the following capital improvements:

- Maintenance and equipment upgrades for the Robert Werner Research & Education Boat - "The Bob"
- Upkeep and motor and pontoon replacements for Milfoil Control Vessels
- New purchase and repair and maintenance of Milfoil Control Benthic Matting
- Upkeep of Milfoil Control Diving Equipment
- Purchase and maintenance of watercraft decontamination infrastructure to help prevent invasive species
- Purchase and upkeep of watershed improvement project infrastructure
- Support for lake monitoring research equipment

## SLA LEGACY FUND

*Investors*2018 - 2023  
DONATIONS & PLEDGES

We extend our deep appreciation to each of our donors who have joined with us in all of our efforts to help prevent future Harmful Algal Blooms and keep our Lake clear and our Lake water pure.

“Water links us to our neighbor in a way more profound and complex than any other.”

- John Thorson

*Founders*

2018 - 2023 cumulative giving of more than \$100,000

Allyn Family Foundation  
Jonathan & Louisa Cohlan  
Maclaren & Rochelle Cummings  
Patrick & Jessica Danial  
Michael J & Noreen R Falcone & Family  
John & Kimberly Mezzalingua  
Steven & Jacquelyn Miron  
James Pulaski  
Peter & Elsa Soderberg  
Peer & Maureen Soderberg

*Leaders*

2018 - 2023 cumulative giving of \$25,000 to \$99,999

Edward & Deborah Brennan  
Mark & Mara Charlamb  
Craig & Barbara Froelich  
Christopher & Amy Neumann  
Robert & Sally Neumann  
Sara Recktenwald  
Robert & Lynne Scheer  
Gary & Virginia Shanley  
Jennifer Sutherland

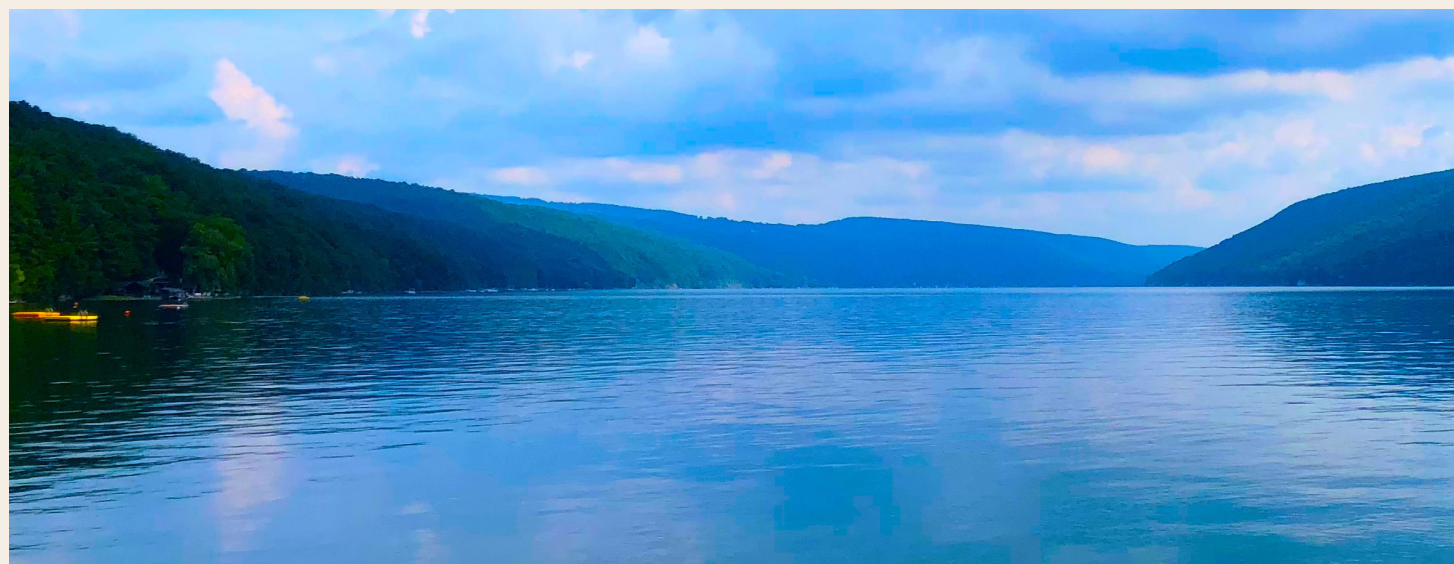
*Benefactors*

2018 - 2023 cumulative giving of \$5,000 to \$24,999

Anonymous  
David & Amy Allyn\*  
Lew & Dawn Allyn\*  
Mark & Allison Allyn\*  
Walter Benson & Katherine Cogswell  
David Birchenough & Carrie Lazarus  
Mary Cotter  
Sid Devorsetz  
William & Barbara Dean  
Edward & Margaret Dienst  
Dwight W. Winkelman Foundation  
Holland Gregg & Patience Brewster  
Finger Lakes Realty Partners  
(Jerry & Kathleen Morrissey)  
Hamilton & Fran Rotunno Fish  
Joseph & Marie Grasso  
Dana & Susan Hall  
Joseph & Mary Ellen Hennigan  
Richard & Deborah Hole

Bruce & Linda Kenan  
Darlene Kerr  
Max & Agnes Kunz  
Paul & Kathy Leone  
John MacAllister & Laurel Moranz  
John & Elizabeth McKinnell  
Gardner & Lynn McLean  
Mid Lakes Navigation (In-Kind)  
Jim & Julie Moore  
David Muir  
Thomas, Camille & Ashley Potter  
William & Gretchen Roberts  
Dan & Linda Roche  
Angelo & Margaret Scopelianos  
James & Deborah Tifft  
Paul & Mary Torrisi  
Salli & James Tuozzolo  
John Walsh

*\*indicates additional donation made via Allyn Family Foundation*



*Friends**2018 - 2023 cumulative giving  
of up to \$4,999*

Julie Abbott  
 Douglas Allis  
 Eric Allyn & Meg O'Connell\*  
 William Allyn\*  
 Robert & Barbara Amsler  
 Roland & Tacie Anderson  
 Anonymous  
 Anonymous  
 Anonymous  
 Anonymous  
 Armstrong Family  
 Sandra Attleson  
 George & Sharon Azzam  
 James & Catherine Baranello  
 John & Maureen Baringer  
 Edward & Sharon Barno  
 Annette Becker  
 Gwen Birchenough  
 Mark & Leokadia Bitz  
 Paul & Karen Black  
 Donald & Jane Blake  
 Kenneth & Marjorie Blanchard  
 Wendy Blewett  
 Edward & Mary Blum  
 James & Julie Boenheim  
 Carlile & Barbara Bolton-Smith  
 Michael Boudreau & Julie Stafford  
 James & Cynthia Bright

Virginia Bryce  
 Bryce Family Foundation  
 David & Mary Bundy  
 Richard & Joyce Campbell  
 Jeffrey & Mary Beth Carlberg  
 Colin & Carrie Carroll  
 Cayuga Tree Service  
 Peggy Chase  
 Steven Clymer & Brenda Sannes  
 Paul & Linda Cohen  
 William & Martha Cole  
 Columbian Foundation  
 Ellen Compton  
 Stephen & Alexandra Congel  
 Laurie Cottrell  
 Bill & Jane Cummings  
 William & Nicole Cummings  
 David & Lynne Curtin  
 Susan Dailey  
 John & Patricia Dale



Erika Davis  
 Peter & Colleen Dean  
 William & Deborah DeLaney  
 Jed & Barbara Delmonico  
 JD & Mary Delmonico  
 Patrick & Emma Delmonico  
 Delmonico Insurance Agency  
 Michael & Diane Dolcemascolo  
 Jane Downs  
 Patrick Doyle & Elizabeth Downes  
 Gregory & Michelle Drumm  
 David Duggan & Lynn Cleary  
 Nancy Easter  
 Barbara Egtvedt  
 F. J. Estlinbaum Barge & Crane  
 Elizabeth Etoll  
 Lois Exner  
 Anne Fairbanks  
 Floreck Family  
 Gianfranco & Johanna Frittelli  
 Christine Fry  
 William & Kimberly Gilberti  
 Goetzmann Family  
 Michael & Kathleen Gorr  
 David Graham  
 James & Emily Gregg  
 Hanley Family  
 Brian & Maureen Harkins  
 Robert & Martha Harris  
 John Havemeyer  
 Mark Heffernan

Daniel Hennigan  
 James & Ann Higbee  
 Ann Hinchliff  
 David Honold  
 Jayne Howard  
 Robert & Claire Howard  
 Robert & Marcia Hunt  
 Kenneth Hyde & Nellie Ramsden  
 Catherine Kane  
 Kathryn, Max & Isabella Karpinski  
 Mary Jacqueline Keady  
 Chris & Lynn Kelly  
 Margaret Kelly  
 Daniel & Virginia Kenney  
 David & Sherill Ketchum  
 Jeffrey Kirshner & Lorraine Rapp  
 Konrad Family  
 Robert (Chris), Karen & Georgia Kreidler  
 Judith Krieger  
 Kris-Tech Wire Co, Inc.  
 W. Theodore & Joan Kuck  
 Gary & Lucinda Kuhns  
 Kevin La Grow  
 Benjamin Lavery & Maura Swan  
 James Leonard & Patricia O'Shaughnessy  
 Liz Liddy  
 Joann Loftus  
 Thuan & Allison Loi  
 Eloise Luchsinger  
 Robert & Elizabeth Legg Madden  
 Mandana Barn (Tim & Heather Carroll)

*Friends -continued*  
2018 - 2023 cumulative giving  
of up to \$4,999

Nancy Marquardt  
Todd & Jill Marshall  
William Mayo  
William & Patricia McAvoy  
Joseph McCaffrey & Jacqueline K. Bays  
David & Norma McCarthy  
William & Cynthia McCauley  
John McDevitt & Helen Tai  
Edward & Charlene McGraw  
Lindsay McMillan  
Victoria Meyer  
Daniel & Kathleen Mezzalingua  
James Miller  
Dave & Paula Miller  
Toby & Jessica Millman  
Robert Moses  
Randall Mott  
Lynsa Mura  
Neil & Joanne Murphy  
Nancy Murray  
Michael Murray Memorial Donations  
Kevin Nichols  
Mr. & Mrs. Richard Nicklas  
Town of Niles  
North End Outdoors  
(Jeff & Debbie Bobbett)  
Sean & Laura O'Keefe  
Patricia Orr

John Osborne  
John & Sharon Paddock  
Joseph & Debra Paduda  
Lawrence Palmieri  
John & Lynda Parsons  
Peter & Ann Paullin  
Nancy Peck  
Jason & Kim Persse  
Joseph Howard Phillips  
Paul & Danielle Pimpinella  
Michael Plochocki & Family  
Alex & Carol Protasiewicz  
Patrick Riccardi  
Joseph & Lynne Romano  
Christopher & Amy Rudolph  
Daniel & Linda Scaia  
Anne Hurley Scholl  
Mark & Misty Schwab  
Robert & Timothy Scott & Kathleen Gentile  
Mary Sennett  
Carol Shannon  
David Sheppard  
Stephen Shope  
Christopher Short & Abigail Duggan  
Ryan Sidebottom & Natasha Ginzburg  
Nicholas & Cynthia Signorelli  
Keith & Helen Simonelli  
Skaneateles Garden Club  
Skaneateles Sailing Club  
Skaneateles Town Square  
(Jeffrey & Kate Youle)

Skaneateles Winding Way Association  
Slottje Family  
James & Susan Solomon  
Steven & Sharon Songer  
William & Molly Spalding  
Edward Spencer  
Joseph & Robin Steencken  
LaDorna Stephens  
Martha Stephens  
Warren Stoddard  
Jeffrey Stregiel  
Walter & Kathleen Sullivan  
John & Anne Sveen  
Ben & Kathleen Tarantino  
Bruce & Patricia Texiera  
Nancy Tiedemann  
Laurie Timmons  
Paul & Meredith Torrisi

Daniel & Susan Troup  
Mary Tucker  
Thomas & Leah Valenti  
James Vitikus  
Tom & Maureen Walsh  
Robert Warfield, Jr.  
Wegmans Food Markets, Inc.  
Robert & Jo Werner  
Peter White & Mary Socci  
White & White Antiques, Inc.  
(Steve & Bev White)  
David & Marilee Williams  
Patricia Woodcock  
Jonathan Woodcock  
Warren & Susan Wulff  
Michael & Vanessa Yates  
John & Carol Young

*\*indicates additional donation made via  
Allyn Family Foundation*

*Skaneateles Lake is the only natural 'sole source'*  
for unfiltered municipal drinking water in NYS.



## The Dr. Robert Werner

# RESEARCH AND EDUCATION BOAT

For many years, the Skaneateles Lake Association's (SLA) esteemed Board Member and Lake Ecologist, Dr. Robert Werner, (Bob) had conducted lake surveys, water sampling and other studies using his own pontoon boat in supporting the SLA's efforts to protect Skaneateles Lake. While he was often assisted by other Board Members and colleagues, he carried out much of the work alone on his own boat. In 2019, Dr. Werner advised his fellow Board Members that he was no longer going to be able to conduct the lake surveys and be available to conduct the other sampling and studies he had conducted.

The SLA Board recognized that we were going to need to acquire our own boat in order to be able to continue to do all the work that Dr. Werner had done for years and even more including educational programs for youth and adults. It was immediately decided that the boat would be named for Dr. Werner.

An initial concept for the boat was developed and drawings of the concept were made. We were pleased to be able to share the concept, renderings, and proposed name for the boat before Bob passed. His comment on seeing the plans was brief ... "this will be good".

The Board had already started to reach out to community members for donations to build and equip the boat. After Dr. Werner's passing, donations in his honor and donations specifically for the boat poured in from friends, family, colleagues and many community members.



*Special thanks to SLA volunteers Bill Dean and John Menapace for designing and fabricating this sophisticated research/education vessel which will serve our lake and watershed region for many years to come!*

The Dr. Robert Werner Research & Education Boat, affectionately known and secondarily, named "The Bob", was commissioned into action at the Skaneateles Country Club on June 27, 2022 and was only made possible by the generosity of all of the following:

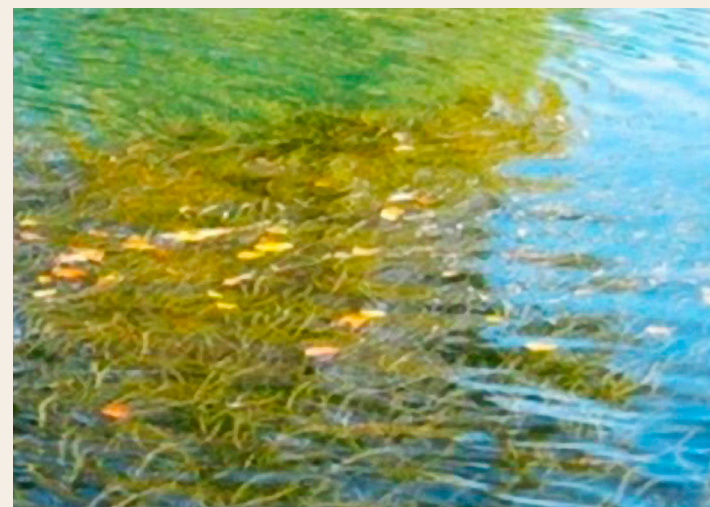
David & Amy Allyn	Greenville LLC	Steven Phillippy & Janice Kemp Phillippy
Anonymous	Holland Gregg & Patience Brewster	Shirley Powers
Anonymous	Amy Lynn Gregory	Floramay Racz
Henry & Helga Beck	John David Hammond	N. Sondor & Kristy Racz
Dessa Bergen	Brian & Maureen Harkins	Yvonne Racz
David Birchenough & Carrie Lazarus	Kenneth & Barbara Hearst	William & Gretchen Roberts
Wendy Blewett	Donna Himmelfarb	Andy & Kitty Robinson
Brinson Marine	Richard & Deborah Hole	Daniel & Linda Roche
Virginia Bryce	Robert & Claire Howard	Scott Rogers
Laura Busby	Peter & Jane Hueber	Michael Schrader & Lauren Kochian
Jeffrey & Marybeth Carlberg	Jackie Keady	Sevey's Boatyard
Delores Chappell	David & Sheril Ketchum	Skaneateles Country Club
Aimee Clinkhammer	Edward & Lena Kochian	Skaneateles Sailboat Shop
Paul & Linda Cohen	Richard & Mary Kokosa	Steve & Sharon Songer
The Columbian Foundation	Dorothy Krause	Wolfram & Elena Stahl
Stephen Congel	Judith Krieger	Mr. & Mrs. Robert A. Stevens
Suzanne Congel	Lakeview Auto & Marine (Bob, Terri & Rachel DeWitt)	Gene & Joan Tarolli
Jim & Sharon Cross	Carolyn Legg	Nancy Tiedemann
Robert & Roberta Culbertson	Brian & Jean Madigan	James & Deborah Tiftt
Jeffrey & Barbara Culhane	Mary Marshall	Paul & Mary Torrisi
William & Barbara Dean	Kevin & Fran McCormack	Larry & Katherine Weiss
Merrill & Paula Denslow	Mercury Motor Company	Philip & Ashley Wesson
Sid & Suzanne Devorsetz	Jim & Julie Moore	Joe & Shasta White
Charles & Kimberly Driscoll	Judith Morrissey	Randall & Paula White & Frank Canastrano
Ham & Fran Rotunno Fish	Frank Moses	Charles Williams
Ronald & Rose Ann Gay	Patricia Orr	Lucy Williams
Sheila Goetzmann	Michael Paciorek	Marilyn Wurzburger
David Graham	Lawrence & Nan Pardee	

## SLA MEMBERSHIP FUND Programs

The SLA Membership Fund is our primary funding source to support on-going prevention and remediation efforts to combat invasive species. SLA implements a Eurasian watermilfoil (*Myriophyllum spicatum*) control program on Skaneateles Lake that has now reduced that species coverage to a level only requiring “maintenance” control.



Milfoil Control work boat with matting on board. Photo courtesy of Ty Denslow.



Patch of Eurasian Watermilfoil on Skaneateles Lake

AIS Prevention and Milfoil Control yearly costs are close to \$250,000 and primarily supported by annual membership funds.

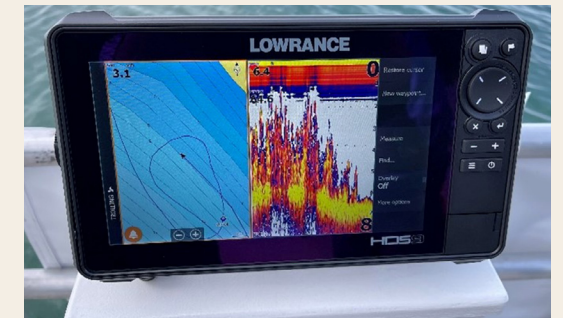


## Milfoil Control Operations in 2022

Over 6 acres of matting designed to reduce Milfoil populations was strategically deployed by John Menapace and Aquatic Invasives, Inc. using sonar survey information collected by SLA.



Aboard “The Bob” – (Dr. Robert Werner Research & Education Boat) – SLA Board Members, Dr. Bill Dean, Co-Chair of Lake Ecology Team; Dr. Paul Torrisi, President; Dr. Buzz Roberts, VP, Lake Ecology Team Co-Chair, and volunteer Director of Watercraft Stewardship program since 2012, conducting a Milfoil Survey.



Side-scan Sonar imaging with Milfoil signature.

## Aquatic Invasive Species Prevention with Watercraft Steward Program



Our neighbor, Cayuga Lake is both home to Hydrilla and the #1 source of boaters coming to Skaneateles Lake.



SLA Watercraft Steward Jim MacLachlan surveys incoming boats to protect Skaneateles Lake from any new threats of invasive species like Hydrilla.



L to R – City of Syracuse Mayor Ben Walsh with head SLA Boat Steward Marty Minet and Sr. Steward Roy Truswell. City of Syracuse continues to be a partner leveraging SLA membership funds in support of preventing new invasive species from entering Skaneateles Lake.

# Skaneateles Lake Association MEMBERS

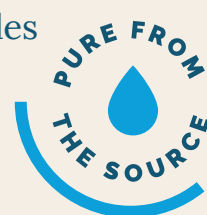
Just as clear, pure water is the lifeblood of Skaneateles Lake and the Skaneateles community, membership is the lifeblood of the Skaneateles Lake Association. A strong membership supports innovative and dynamic projects & programs that can help us all to achieve lasting results. We'd like to thank our Members which include individuals, families, businesses, and organizations.



## MEMBER LIST - JANUARY, 1 2022 - MARCH 31, 2023

Janet Aaron	Anonymous 73	James & Catherine Baranello	Anonymous 43	Anonymous 79	David & Mary Bundy	Lee Casler	Kip & Becky Coerper
Mark & Diane Aberi	Curt & Susan Andersson	John & Maureen Baringer	Paul & Karen Black	Ayham & Gillizn Boucher	Lance & Patty Burghardt	Christina Castle	Coffin Corner (Sarah Fitzgerald & Patricia Coffin)
Peter & Sharon Andrus	Armstrong Family	Edward & Sharon Barno	Walter H. Blackler	Bouquet Holstein PLCC (Jeff & Cate Davis)	Phil & Kathy Byrne	Jane Cate	Paul & Linda Cohen
Paul Alciati	Michael & Kelly Arroyo	Bartlett Tree Experts	Patricia Blackwell	William & Julie Bourke	Joseph Calipari	Cayuga Tree Service (Christopher & Marianne Sandstrom)	John & Louisa Cohlan
Richard Alciati	Linda Merrill Arthur	Anonymous 70	Donald & Jane Blake	Jack & Katherine Boyce	Mark & Janet Calipari	Peter & Danielle Cerimeili	Larry Cole & Terry Askey-Cole
David & Amy Allyn	Aster Weddings & Events (Shannon Pratten)	Ronald Beavers & Karen Lewis	Susan Blakney	Greg Boyer	Robert & Jane Calkins	Paul & Joy Chamandy	Martha Cole
Lew & Dawn Allyn	George & Charlene Atkinson	Henry & Helga Beck	Scott & Madeleine Blanchard	Mary Bradly	Brian & Romy Callahan	Anonymous 80	Ira Coleman & Debra Hurley
Mark & Allison Allyn	Sandra Attleson	Annette Becker & Family	Kenneth & Marjorie Blanchard	Dan & Judy Bragg	John & Elet Callahan	ChaseDesign	C. J. Collins
William Allyn	Joseph & Deborah Augustine	Robert & Jodi Bellinger	Blewett Family	Anonymous 57	Anonymous 52	Chestnut Cottage	Columbian Foundation
Eric Allyn & Margaret O'Connell	George & Sharon Azzam	Andrea Belusko	Bluewater Grill	Edward & Deborah Brennan	Joan Callaway	Elizabeth Christopher	Comer Family
Nicole Way Allyn	Donald Babcock & Caroline Kaye	Matt & Gina Benedict	Anonymous 78	Jim & Cindy Bright	Jeff & Caitlin Campbell	Paul & Maria Christou	Joseph & Katherine Compagni
Allyn Family Foundation	Anonymous 8	Benevity Community Impact Fund	Bobbett Family	Brinson's Marine Group	Richard & Joyce Campbell	David Churchill & Judy Sweet	Adam & Sarah Compton
Dawn Altmeyer	Mary Ellen Banazek	Walter Benson & Katherine Cogswell	Casmir Bobowski	George Bristol & Barbara Kay	Kenneth Cannon & Joanne Viggiano	Michael & Pamela Ciarla	Ellen Compton
Amber Well Drilling & Water Systems	Christine Banke & Melinda Carney	William & Dessa Bergen	Christoper Bodell & Alicia Tsai	Jonathan Brodock & Beecher Graham	Anonymous 83	Jim & Sharon Cirincione	Compton Family
Anonymous 62	Robert & Lisa Banuski	Berkshire Hathaway CNY Realty (Mary MacKaig)	Orville & Diane Boden	Marilyn Brothers	Anonymous 82	Kimball Clark	Suzanne Congel
Bill & Susan Anderson		Thomas Bersani & Joan Christy	James & Julie Boenheim	Dillon & Katie Brown	Patti Carey	Anonymous 38	David & Ruth Conley
Roland & Tacie Anderson		Dave Birchenough & Carrie Lazarus	Jeffrey & Kristine Bogart	Gerald Brown	Jeffrey & Marybeth Carlberg	Philip Clayton & Colleen Plimpton	Richard & Alison Conley
		Margaret Bisgrove	Connie Bohrer	Kay Bruening	Kathryn Carlson	Anonymous 89	Patrick & Deborah Connolly
		Lee & Karen Bishop	Robert & Carina Bone	Marilyn Isler Brunger	Colin Carroll	Steven Clymer & Brenda Sannes	Barbara Connor
			Joseph Bongiovanni & Heather Lane	Virginia Bryce	Blake & Brittney Carter	Alan & Joan Coates	Bill & Pat Conole
			Michael & Margaret Bongiovanni	Anne Buehler	Anonymous 74	Bill & Betty Cochran	Nancy Coon
			Anonymous 61	Taber & Sara Buhl	Brian & Roni Carvalho		
					Burt Carver		

Due to the unfiltered Skaneateles Lake water supply, the City of Syracuse enjoys some of the *lowest water rates* in New York State and the nation.



Walter & Lucy Copeland	Robert Daubenspeck	Tim & Julie DiBagio	Forrest & Sara Earl	Rick & Cathy Fedrizzi	Jay & Karen FitzGerald	Mary Gardner	Garard & Francine Grannell
Patricia Coppe	Richard Dausman & Amy Tormey	David Dickinson	Guy & Nancy Easter	Holden & Karen Fenner	Paul & Erika Fiutak	Polly Gardner & Family	Joseph & Marie Grasso
Bob & Jane Corcoran	Jamie Davis	Dickman Farms Greenhouse & Garden Center	Patricia Eastman	Douglas B. & Carol Brewer Fenton	Robert Flannery	Paul Garrett	James & Emily Gregg
Michael & Carol Corcoran	Peter & Danette Davis	Ed & Maggie Dienst	Ecoscope Design	Gerald & Ann Ferro	Tom & Carol Fletcher	Adam Gasiorowski & Claudia Kosty	Holly Gregg & Patience Brewster
Mary Cotter	William & Donna Davis	Fouad & Michael Dietz	Elizabeth Edinger	Douglas & Jessica Fetterman	Ben Fliegel & Radhika Dewan	Dan Gastin & Annette Otis	Gregory Family
Anita Cottrell	Meagen Dean	Michael Dillon	Edinger Family Lakehouse	Chris & Caitlin Fields	Floreck Families	Marjorie Gavin	Robert Gregory
Laurie Cottrell	Peter & Colleen Dean	Joseph Dimento & Deborah Newquist	D. W. & Marilyn Edington	Dave Figura & Laura Downs	Eleanor Follett	Eric Gebhard & Michelle Palenscar	Lance & Margaret Greve
Dan & Kathy Coughlin	Philip Dean	Anthony & Suzanne DiNicola	Eggleston & Krenzer Architects, Inc.	Thomas Filicia	Ray & Kimberly Forbes	Kyle & Liz Gebhart	Celeste Gudas
John Coughlin	Robert Dean & Virginia Calvert	Ronald & Janet Dippold	Barbara Egtvedt	Anonymous 81	Steven Ford & Patricia Lynn-Ford	Wolfgang & Amandy Geihe	Lorraine Gudas
Michael Coughlin & Gretchen Geiger	William & Barbara Dean	Michael & Diane Dolcemascolo	Carey Eidel	Bob & Beth Filiczowski	Diane Forney	Anthony & Linda Geiss	Sandra Hadley
Paul & Gail Cowley	Anonymous 31	Kevin Donnelly	Lorne & Gale Elder	Finger Lakes Chapter ACBS	James & Mary Fox	Alex & Donna Giambartolomei	Neb & Florie Hage
Dana & Dorothy Coye	JD & Mary Delmonico	Donohue Family Fund	Scott & Teri Elia	Finger Lakes Mechanical Sales & Service (Mike Foote)	Eugene & Tracy Franchini	Charles & Jacqueline Giancola	Hagen Family
Jim & Sharon Cross	Jed & Barbara Delmonico	Anonymous 18	Gregg & Meryl Eriksen	Finger Lakes Realty Partners (Jerry & Kathleen Morrissey)	Donald & Janet Frank	Stephen Giglio	Alan & Laurie Hahl
Robert & Rebecca Culbertson	Joel & Chris Delmonico	Vincent Dopulos & Christine Larsen	FJ Estlinbaum Barge & Crane	Fingerlakes Luxury Homes	Anonymous 46	J Gilbane, III & Jeffrey M Towsey	Richard & Lesia Haines
Bill & Jane Cummings	Matthew Delmonico	Gary Dower	Elizabeth Etoll	Seth Fischer	Gianfranco & Johanna Frittelli	William & Kimberly Gilberti	Clayton & Patricia Hale
Maclaren & Rochelle Cummings	Patrick & Emma Delmonico	Jane Downs	Richard & Barbara Evans	Hamilton & Fran Rotunno Fish	Craig & Barbara Froelich	Mary Giroux	Dana & Susan Hall
Brian & Christine Cunningham	Sean & Deanna Delmonico	Patrick Doyle & Elizabeth Downes	George & Mary Anne Drew-Evans	Daniel Fisher & Lori Ruhlman	Christine Fry	William & Marybeth Gleason	Michael Hall
Jim & Ceme Curley	Delmonico Insurance Agency	Mark Drastal	Lois Exner		Anonymous 68	Glen Cove LLC	Ryan Hall
David & Lynne Curtin	Ralph DeMasi & Susan Scheuerman	Charles & Kimberley Driscoll	Anonymous 37		Kent & Linda Fuchs	Joseph & Diana Goethe	Douglas & Pamela Hamlin
Susan Dailey	Merril & Paula Denslow	Anonymous 19	Robert & Kathryn Fagliarone		Richard & Sarah Furlow	Goetzmann Framily	Allen Handelman & Barbara Cote
John & Patricia Dale	John & Cynthia Desko	David Duggan & Lynn Cleary	Fair Haven Enterprises Partnership (Kathleen Hudson)		Joseph & Mary Gaffney	Goffe Cottage (Jack Moore & Gretchen Goffe)	Thomas & Jane Hanley
Devin & Angela Daly	Sidney Devorsetz	Vic & Debbie Duniec	Anne Fairbanks		Robert & Louise Ganley	Kevin & Sarah Goode	John & Kathy Hardy
Patrick & Jessica Danial	Scott & Bethany DeWolf	Barbara Durr	Michael & Nicole Falcone			Michael & Kathleen Gorr	Janice Hardy
Steve Datz & Rachel Harms	Nicholas Diakow & Renee Laffer	Ellen Dusault	Michael & Noreen Falcone			Nancy Graham	Brian & Maureen Harkins
		Brad & Hannah Dusto	Patrick Fall & Margaret Clooney			Schuyler & Karen Graham	Martin & Rosemary Harms
		Diane Dwire	Paul & Patricia Fallon			David Graham	Rich & Sheila Haswell
		David Dzielak	Anonymous 24				John Havemeyer
		Thomas & Shirley Eagan	Farchione Family				Cheryl Hawkins
							David & Elizabeth Hayes & Anne Tracy
							Kenneth & Barbara Hearst



“For many of us, clean water is so plentiful and readily available that we rarely, if ever, *pause to consider what life would be like without it.*”

- Marcus Samuelsson





Bill & Lucienne Hecht  
 Anonymous 54  
 Edward & Janet Heinrich  
 James Helmer & Kathryn Pasqua  
 Sheila Hemami  
 David & Karen Hempson  
 Daniel Hennigan  
 Joe & Mary Ellen Hennigan  
 Richard & Joyce Herlihy  
 Hertig Family  
 Jim & Patty Hertz  
 Terry Cerquone Herzing  
 Eric & Leslie Heyer  
 Gary & Merrily Heyer  
 Philip & Judy Hider  
 Andrew & Alison Hider  
 James & Ann Higbee  
 Higgins Harbour Family  
 Donna Himelfarb  
 John Moss & Robin Hinchcliff  
 Gary & Deborah Hind  
 Kyle Hobart  
 Hobbit Hollow Farms  
 Donna Hogan  
 Sarah Holben  
 Thomas & Sandra Holbrook  
 Richard & Deborah Hole  
 Bob Honold  
 David Honold  
 Neal & Alice Houser  
 Jayne Howard  
 Robert & Claire Howard

Peter & Jane Hueber  
 Dorothea Hughes  
 Robert & Marcia Hunt  
 Richard Hurley  
 David & Ursula Hutton  
 Kenneth & Jeanne Hutton  
 Kenneth Hyde & Nellie Ramsden  
 Bill & Patricia Innerst  
 Peter Isler & Miriam Torres Brinkmann  
 Jim & Daisy Jacobs  
 Robert & Catherine Jamieson  
 Joan Jayne  
 Thomas & Gretchen Jeffers  
 Anonymous 71  
 Jermy Family  
 James & Emily Johnson  
 Tim Johnson  
 Chris Johnson & Jean Shook  
 Scott & Jolie Johnston  
 David & Beverly Jones  
 Robin & Joyce Jowaisas  
 Joseph Judge & Sheila Myers  
 Francis & Lauren Kaduc  
 Catherine Kane  
 David Kanter & Stacy Metcalf  
 Kathryn, Max & Isabella Karpinski  
 Mary Jacqueline Keady  
 Anonymous 80  
 Timothy Kelley

Emmett & Nicole Kelly  
 Margaret Kelly  
 Kelly Family  
 Bruce & Linda Kenan  
 Gregory Kenien & Mary Ellen Faughnan  
 Ginger Kenney  
 Darlene Kerr  
 David & Sherill Ketchum  
 Harry Kettmer & Martha Kendrick  
 Ann Kilian  
 Robert Kiltz  
 Christopher & Laura Kinder  
 Ted Kinder  
 Edward Kirk  
 Jeffrey Kirshner & Lorraine Rapp  
 Brian & Leisyl Kleinberg  
 Jordan & Olga Kligerman  
 Julia & Lori Klock

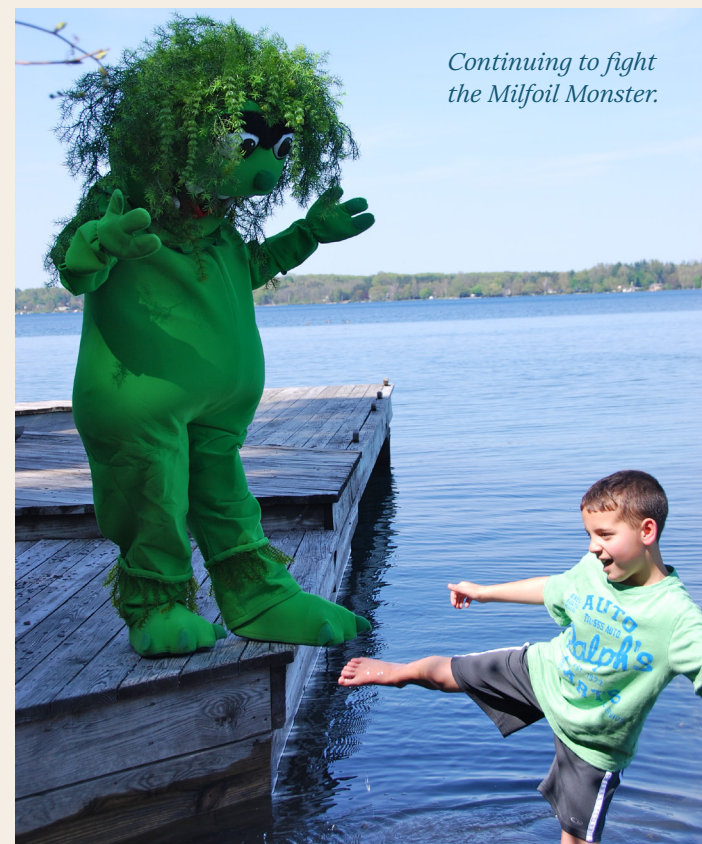
Lee Klosowski & Susanne Guske  
 Mary Knepper & Susan Mark  
 Michael Knoll & Lauren Steinfeld  
 Albert Knorr & Monica Bunkenburg Knorr  
 Edward & Lena Kochian  
 George & Dawn Kocsis  
 Mary Kokosa  
 Trevor & Emily Kolego  
 John & Wendy Kopley  
 Kay Kraatz  
 Richard & Shelly Kraetz  
 James & Kimball Kraus  
 Dorothy Krause  
 David & Alexa Krauter  
 Eric & Megan Krauter  
 Allan & Marion Krauter  
 Michael Krebs  
 Chris & Karen Kreidler  
 Jennifer Kreischer

John & Lynn Kreischer  
 Judith Krieger  
 Kris Tech Wire  
 Christopher & Fadia Kruse  
 Theodore & Joan Kuck  
 Gary Kuhns  
 Mark & Ellen Kulik  
 Max & Agnes Kunz  
 Raymond & Donna Kurlak  
 Wayne & Sue LaFrance  
 Daniel & Grace Labeille  
 Stephen Laffer  
 Kevin & Kathy LaGrow  
 Lake Country Construction & Contour (James & Kimberly Tracy)  
 Lake & Village Realty LLC (Michael Williams & Johan Visser)  
 Lakeview Auto & Marine (Bob, Terry & Rachael DeWiltt)  
 Don & Jill Lang  
 Marvin & Patti Langley  
 David & Joyce Larrison  
 Bob & Chris Latella  
 Steven & Hilde Lauber  
 Benjamin Lavery & Maura Swan  
 Linda Lavery  
 Lee Properties  
 William & Margaret Lee  
 Anonymous 50  
 Mark & Lisa Leesman  
 Chris Legg & Nancy Thomas

Lynn Lehihan  
 James Leonard & Patricia O'Shaughnessy  
 Anonymous 15  
 Robert & Betty Liegel  
 Lions Club of Skaneateles  
 Susan Littlehales  
 Littlefoot & Franklin Fund  
 The Local Branch  
 Cecelia Lockwood  
 Locust Lane Association  
 Joann Loftus  
 Joseph Logan  
 Thuan & Allison Loi  
 Dennis & Ashby Longwell  
 M. F. Loose  
 Roy & Carolyn Lootens  
 Eric Lorberfeld & Elizabeth Friedmann  
 Gard & K. C. Lorey  
 Gary & Mary Jane Lowery  
 Eloise Luchsinger  
 Lucky Dogs  
 James & Ellen Lutz  
 Christopher & Monica Lynch  
 Anne Lynn  
 Martin & Tara Lynn  
 M & T Bank  
 John MacAllister & Laurel Moranz  
 Clifford MacBroom & Lucille Solana  
 Jim & Wendy MacLachlan

Bob & Betsey Legg Madden  
 Brian & Jean Madigan  
 Anonymous 63  
 Robert & Diane Maguire  
 Bill & Miki Mahood  
 Charles Major  
 Michael Major  
 Mandana Barn (Tim & Heather Carroll)  
 John & Irene Manna  
 Chris Mandel & Kenneth & Catherine Maum  
 John & Peggy Manring  
 Justin A Marchuska II  
 David, Kristen & Mavenek Marks  
 Melissa Marquardt  
 Nancy Marquardt  
 William & Bridget Marquardt  
 John & Candace Marsellus  
 Mary Marshall  
 Todd & Jill Marshall  
 Ross Martin & Dr. Deborah Blazey-Martin  
 Fred & Virginia Marty  
 Mehdi & Kathie Marvasti  
 Ed Marx & Sherry Nichols  
 Sam & Sally Mason  
 Rodney & Andree Mastrosimone  
 Barry N. Maturevitz  
 Bill & Jennifer Mayo  
 Richard Mazzeo

William & Patricia McAvoy  
 Joseph McCaffrey & Jacqueline K. Bays  
 David & Norma McCarthy  
 Kevin & Kathryn McCarty  
 William & Cynthia McCauley  
 Steven & Stacey McClintic  
 Kevin & Frances McCormack  
 Margot McCormick  
 John McDevitt & Helen Tai  
 McDowell Family  
 Brenden McGinn & Rebecca Cohen  
 Edward & Charlene McGraw  
 Ben & Kayc McHone  
 Thomas & Lynne McKeown  
 John & Elizabeth McKinnell  
 Paul & Jennifer McKinnell  
 James & Dianne McLaughlin  
 Gardner & Lynn McLean  
 James McLennan  
 David & Meloney McMurry  
 Anonymous 53  
 John & Frances McNerney  
 Mark & Teresa McSwain  
 Matthew & Elaine Medwid



*Continuing to fight the Milfoil Monster.*

Larry & Lynne Meeske	Steve Mott	Sean & Laura O'Keefe	John & Pam Pidhirny	Jack & Linda Rade	Andrew & Kitty Robinson	Larry & Tracy Sala	Christopher & Carrie Scholz
Adam Meinstein & Odile Gelinard	David Muir	Charles O'Neil & Carolyn Legg	Gino & Susan Pietromonica	Raziur Rahman	Dan & Linda Roche	Mathew & Mary Ellen Salanger	Daniel & Mildred Schultz
Anonymous 11	Sandra Mulconry	Patricia Orr	Paul & Danielle Pimpinella	Thomas & Lisa Rainey	Karen Roche	Joseph & Alisa Salibra	Carolyn Schwab
John & Mary Menapace	Anne Munly	Joe Orsen & Jennifer Coughlin	Chris & Cathy Pinckney	Stephen & Elizabeth Ramsey	Chad & Kathleen Rogers	Elan & Anne Salzhauer	Mark & Misty Schwab
Greenville LLC	Cornelius & Joanne Murphy	Bill Osborne & Anne McArdle	Pine Bluff Homeowners Association	James & Lori Ranalli	Scott Rogers & Laura Michelman	Gregory & Catherine Sankey	Angelo & Margaret Scopelianos
Alan & Joyce Methelis	Dennis Murphy	John & Elizabeth O'Sullivan	The Pines	James & Heather Ranalli	Walter Rogers	Adele della Santina	Robert & Timothy Scott & Kathy Gentils
Richard & Victoria Meyer	Eileen Murphy	Richard & Anita O'Toole	Anonymous 48	Jack & Sharon Rappaport	Michael Rogus & Teresa Roche	Richard & Jill Sargent	Joseph & Julie Scuderi
Daniel & Kathleen Mezzalingua	Michael Murphy	Mark Overdyk & Joanie Mahoney	David Pittard	Derek Raymond & Catherine Blacker	Randy & Mary Rohrbeck	Charlie Saxon & Kim Dettor	Douglas & Darcy Sedgwick
John & Kimberly Mezzalingua	William & Anna Murphy	John & Sharon Paddock	Don & Maureen Plath	Anonymous 29	Rolands Men's & Boy's Wear	Anonymous 75	Mary Sennett
Michael DeRosa Exchange (Michael DeRosa & Kelly Ide)	Muscari Family Partnership	Joseph & Deborah Paduda	Trevor Plath	Joseph & Debbie Reagan	Joseph & Lynne Romano	Daniel & Linda Scaia	Margaret Sennett
Andrew Middleton	Steve & Jen Musso	Daniel & Diane Pluff	Anonymous 77	Georgiana Rebhahn	Philip Romano	Tony & Kelly Scalzo	Aime Seymour
Mid Lakes Navigation	Kim A Myers	Peter & Diane Plumley	Julie Plochocki & Family	Sara Reckenwald	Mark Roney	Anonymous 65	Alton & Shannon Shader
Dave & Paula Miller	Dr. & Mrs. David G. Nangle	Bud & Kathleen Poliquin	Daniel & Diane Pluff	Jack & Patty Reed	Richard & Romaine Rood	Scheer Family	Shadowlawn Lakeshore Corporation
James Miller	Anna Nelson	Ray & Barb Poole	Gregg & Ashley Palmer	Stig & Inger Rehnmark	John & Laura Rooney	Steven & Kelly Scheinman	Shady Bend Land Corporation
Mary Ellen Miller	Michael & Eileen Nelson	Mont & Kate Pooley	Larry Palmieri	Anonymous 9	Barbara Root	Ruth Schermerhorn	Shady Bend Corporation
Toby & Jessica Millman	Christopher & Amy Neumann	Nina Popow	Jeff & Cheryl Palomaki	Patrick & Kuni Riccardi	Nicholas & Linda Rossi	Paul Schoenhand & Nicole Jantzi	Rahul Shah & Kelly Cummings
Jim & Lori Milne	Robert & Sara Neumann	Mark & Theresa Potenza	David & Jan Panasci	Tim Riccardi & Mary Swan	David & Susan Rossi	Anne Hurley Scholl	
Larry & Marty Minet	New Hope View Farm	Timothy & Linda Potter	Larry & Nan Pardee	Timothy & Elaine Rice	Anne Roth	Kristopher Scholl	
Steve & Jackie Miron	George & Jill Newton	Thomas & Camille Potter	Michael & Carol Parker	Craig & Rhonda Richards	Thomas & Eileen Roth		
Scott Moe & Jennifer Tuozzolo	Robert Nichols & Katherine Sullivan	Tracy Prentice & Jill Austin	Thomas & Brenda Parkes	Elmer Richards & Sons	Robert Rotondo		
Nigel & Christine Moll	Katherine Sullivan	John Priest & Lynne Boles	George & Sherry Parsons	James Richardson	Arnold & Libby Rubinstein		
Caroline Moore	Dr. & Mrs. R William Nichols, Jr.	Alex & Carol Protasiewicz	John & Lynda Parsons	Anonymous 72	Jeff Rudberg & Emily Gaffney		
James & Julie Moore	Richard & Alexandra Nicklas	Mihael & Kimberly Puc	Peter & Ann Paullin	Richard Ridings	Rudnick Family		
Steven & Noreen Moore	David & Shannon Nierenberg	James Pulaski	Jordan & Melissa Pavlus	Jack Riley & Karen Yuhas	Lawrence & Janet Ruston		
W. Brewster Morris	Michael & Josn Niswender	John & Helen Purcell	Anonymous 49	Dan & Lisa Riordan	Ed & Pam Ryan		
Jerry & Kathleen Morrissey	Lenny Nocilly	Steven Purcell	Judith Pearsall	Forest & Sally Rittgers	Jeff & Carrie Ryan		
Mary Morrissey	Sharon O'Connell	Jerry & Alice Purdy	Pennisi/Kelly Family	John & Diane Rizzo	M Marlene Ryan		
Richard Morse & Claudine Labeille	Anonymous 66	Barry & Amy Quinn	Pennock Pines, Inc.	William & Gretchen Roberts	Travis & Kate Ryan		
Randall Mott	Pat & Cathy O'Connor	Ian & Kary Raddant	Jason & Kim Persse	Jeff Roberts & Carol Lynne Krumhansl	Ryu Family		
	Michael & Pamela Odlum		Joseph A. Phillips	Judy Robertson	Eugene & Donna Sabini		
			Todd & Molly Phillips				



Gerard & Virginia Shanley	Anonymous 23A	Peter & Elsa Soderberg	James & Kiki Strodel	George Thomas & Patty Wiese	Via Mondo Travel & Wellenss (Rosemary Mondo)	Geoffrey & Gina Wickwire	Sara Wingerath-Schlanger
Carol Shannon	Skaneateles Marina (John Cherundolo)	James & Susan Solomon	Neil & Christine Strodel	Bruce & Kathryn Thompson	John & Jean Vincent	John & Linda Wickwire	Dwight W. Winkelman Foundation, Inc.
Oleg & Anna Shapiro	Skaneateles Psychology Associates	Robert & Betsy Solsky	Kara Strods	Genevieve Thompson	James & Racquel Vlassis	2673 Widewaters LLC	Lilli & Christy Winkelman
Rich & Paula Hardy Sharkey	Skaneateles Rotary Foundation, Inc	Songer Family	Sal & Hope Strods	Mya Thompson	Demetra Vounas	Duane & Denise Wiedor	Thomas Wise
Liz Sharp	Skaneateles Sailing Club, Inc.	Sons of the American Legion Squad 239	Salvin & Anita Strods	Three Birds Properties	Ben & Eleanor Ware	Amy Wiles	Donald & Kendra Witter
Anonymous 86	Skaneateles Sunrise Rotary Club	434 Spafford Landing LLC	William & Sara Strong	Nancy Tiedemann	Robert Warfield & Alison Smith	David & Leanne Willard	Howard Wolhandler & Karen Lawitts
Steven Shehadi	Skaneateles Town Square (Jeffrey & Kate Youle)	John & Barbara Spain	Dan & Mary Pat Suits	James & Deborah Tifft	Bill & Jen Warning	Charles & Nancy Williams	Patricia Woodcock
John & Susan Shehadi	Skaneateles Volunteer Fire Department	Bill & Molly Spalding	Walter & Kathleen Sullivan	Michael & Judith Timmins	Dianne Washington	David & Marilee Williams	Duncan Wormer & Barbara Benedict
James & Carol Sheldon	Skaneateles Winding Way Association	Curtis & Patrice Spalding	Donald & Chacea Sundman	Laurie Timmons	Robert Waters & Linda Pietroski	David & Mary Jean Williams	Priscilla Sandford Worrall
Philip Shepard	Henry & Jeannie Slauson	Jay Spalding & Irene Gonin	Douglas Sutherland	Julia Torrisi	Gay Wayne	Robert & Anne Williams	Warren & Susan Wulff
David Sheppard	Slottje Family	Ted Spencer	Jennifer Sutherland	Paul & Meredith Torrisi	John & Susan Weir	Ryan Williams & Linda Ahern	Robert & Leslie Wurzburger
Sherwood Inn/Bill Eberhardt	Tom & Bettina Smallman	Thomas & Martha Squire	John & Margaret Sutton	Paul & Mary Torrisi	Lawrence & Katharine Weiss	Mathew & Lisa Wilsey	Mike & Denise Yakutchik
Christopher Short & Abigail Duggan	Mona Smart	Carolyn Stafford	John & Anne Sveen	Margaret Tourville	Joshua & Allison Wells	Joseph & Maureen Wilson	Michael & Vanessa Yates
Anonymous 23	Smiles of Skaneateles	Wolfram & Elena Stahl	Anonymous 36	Jacob & Brandy Tracy	Anonymous 78	Window Attire (Diana & Richard O'Brien)	Bruce & Katherine Yenny
Charles Sieving & Alison Beimler	Bolt & Barbara Bolton-Smith	Jeffrey & Virginia Stannard	John & Desiree Swygert	Ralph & Patricia Troisi	Jo Werner	Don & Mary Anne Winfield	Gary & Duane Zdan
Nicholas & Cynthia Signorelli	Doug & Bev Smith	Chad & Diane Steckel	Frank & Mary Szczech	Anonymous 56	2 West Lake Street (Clark Maher)	Fred & Mary Wingerath	Judy Zdep
Korinne Silverman	Glenn & Jane Melrose Smith	Andrew & Catherine Stephens	John Szczech	Daniel & Susan Troup	Thomas & Judith West	John Steele Wingerath	
Gregory & Maria Simmons	Kevin Smith	LaDorna Stephens	Edward & Christine Szemis	Stuart Trust	West Side Lake Association		
Harvey & Doreen Simmons	Linda M. Smith & Family	Anonymous 59	Thomas & Sherry Sziosek	Roy & Jackie Truswell	Michael & Lisa Wetzel		
Keith & Helen Simonelli	Lucinda Smith	John & Nancy Sternfeld	Richard & Joan Tackley	Mary Tucker	David & Heather Wheat		
Anonymous 76	Richard & Carolyn Smith	Charles & Pamela Stewart	Ben & Kathleen Tarantino	Carl Tucker	Paula White		
Kevin & Betsy Sio	Thomas & Susan Smith	Jim Stoddard	Gene & Joan Tarolli	Jaime L Tuozzolo	Peter White & Mary Socci		
Skaneateles Central School Environmental Club	Blair Soars & Susan Birchenough	Eric Stohrer & Gail Calcagnino	Jim & Dannie Taylor	James & Salli Tuozzolo	White & White Antiques (Steve & Bev White)		
Skaneateles Country Club	Peer & Maureen Soderberg	William & Carol Stokes-Cawley	John Teixeira Family	Michael Tutor & Susan Keefe	Whitegate Homeowners Association		
Skaneateles Festival Club	David & Patricia Stone	Anonymous 88	Anonymous 88	Twin Birch Dairy (Dirk & Karen Young)	Douglas & Margaret Whitehouse		
Skaneateles Garden Club	Mike & Renee Strangeway	Ten Mile Point South Cottage Homeowners Association	Gene & Joan Tarolli	Thomas & Leah Valenti	Andrew Whiting & Roberta Ripberger		
Skaneateles Holdings (Judd Seales)		Philip & Diane Tennant	Jim & Dannie Taylor	Guido & Nancy van der Ven			
		Nancy Testani	John Teixeira Family	Sara Van Norstrand			
		George & Lucille Teufel	Anonymous 88	John & Judy Varney			
		Bruce & Patti Texeira	Ten Mile Point South Cottage Homeowners Association	Vermont Green Mountain Specialty Company			
		Seth & Lynn Thibault	Philip & Diane Tennant				

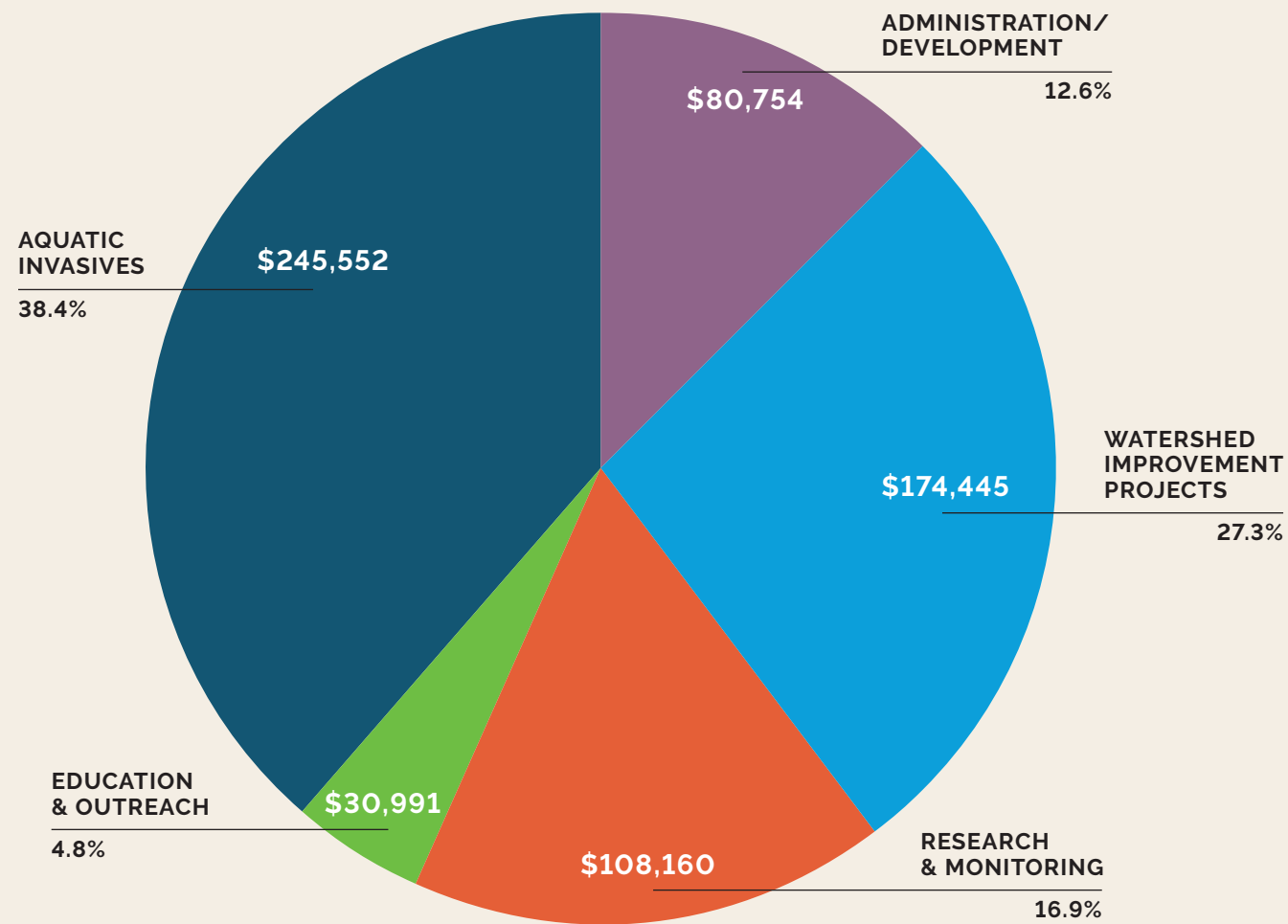
In addition to these members, the Skaneateles Lake Association receives sustaining support from Onondaga County, gratis slips for the Milfoil Team boats from the Skaneateles Marina and a gratis mooring for the Dr. Robert Werner Research & Education Boat from the Skaneateles Country Club.



SLA is supported primarily by the *renewal of annual memberships.*

# SKANEATELES LAKE ASSOCIATION - 2022 MEMBERSHIP & LEGACY FUND EXPENSES

*Combined Total - \$639,902*



87% directly dedicated *toward lake preservation and protection!*

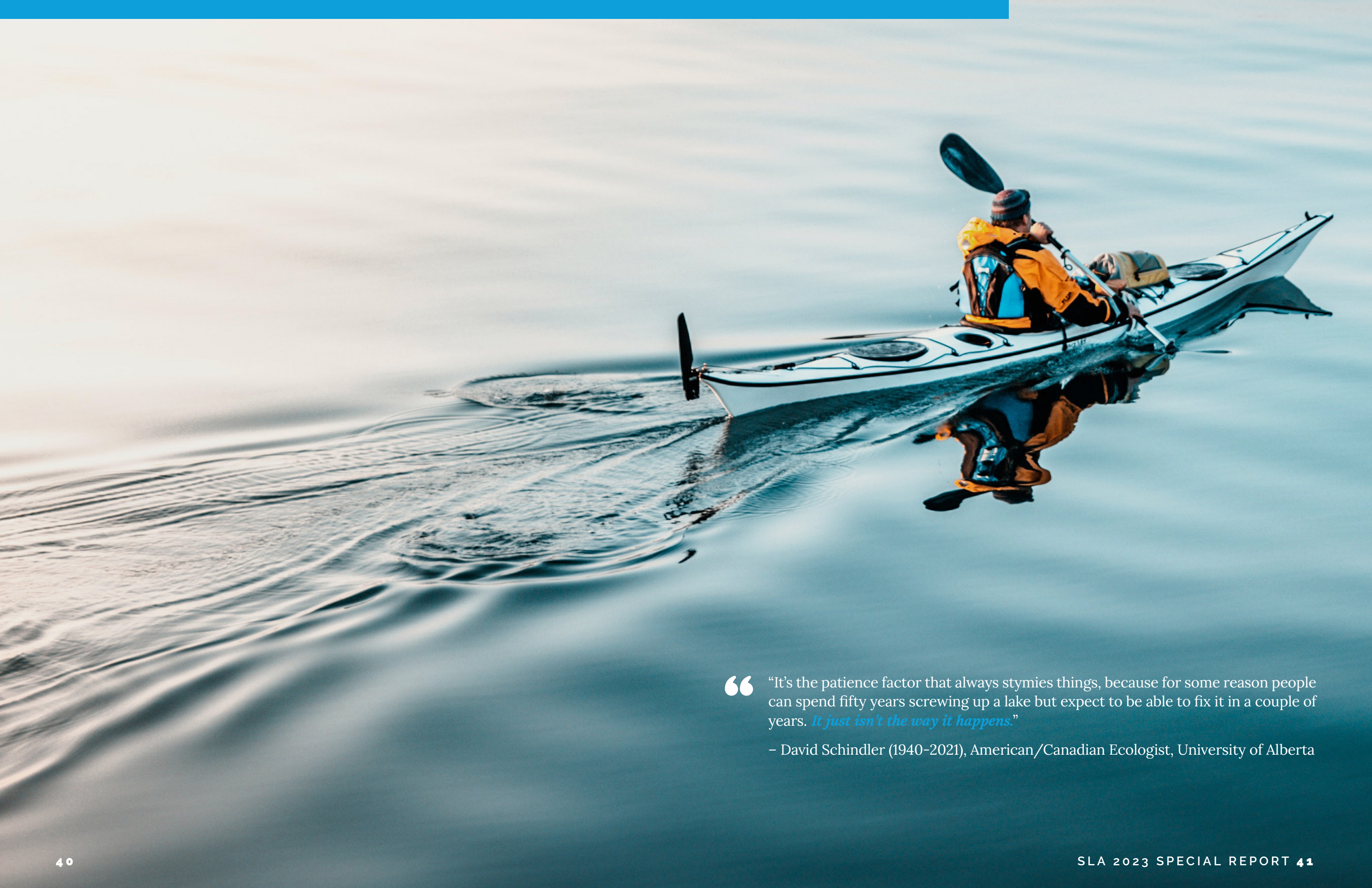
## *It Takes A Team To Keep Our Lake Clear And Pure*

Congratulations! You have reached the exciting conclusion of the first of many SLA special reports detailing our efforts to protect Skaneateles Lake. The SLA Board of Directors shares this 2023 Special Report with you to deliver a detailed understanding of our progress to date, a view of the many challenges ahead and a clear vision for our future efforts.

With your support the SLA is ushering in a new era of breakthrough initiatives that give everyone a role to play at this most critical time for Skaneateles Lake. Supporting SLA through membership and the SLA Legacy Fund is one of the most profound commitments you can make to ensure a clear and pure future for Skaneateles Lake. This investment not only helps to protect and preserve the lake for future generations; it protects the very investments we have all made in the lake in properties and the local community economies.

The clear and pure water of Skaneateles Lake is literally the lifeblood of the Skaneateles community as well as the City of Syracuse and other CNY communities as a drinking water source. Skaneateles Lake is seen by many as the crown jewel among the Finger Lakes. Crystal clear, pristine and pure, one of the last sources of unfiltered drinking water remaining in the nation. It is a haven. It is a recreational gem. It is a natural wonder. It is a lifetime of memories. It is an economic engine. Quite simply, it is worth protecting. The work is before us, we know what needs to be done, join the team and make a smart investment in the future of our lake.





“It’s the patience factor that always stymies things, because for some reason people can spend fifty years screwing up a lake but expect to be able to fix it in a couple of years. *It just isn’t the way it happens.*”

– David Schindler (1940–2021), American/Canadian Ecologist, University of Alberta



JUMP IN AND JOIN  
[skaneateleslake.org](http://skaneateleslake.org)

**SA**  
SKANEATELES  
LAKE ASSOCIATION  
CLEAR LAKE. PURE WATER.