



*Skaneateles Lake Association*

2023 **SPECIAL**  
**REPORT**

PROTECTING + PRESERVING  
SKANEATELES LAKE



# *Skaneateles Lake*

# IS YOUR LAKE

Whether you live on it, play in it, look at it or drink from it, Skaneateles Lake is your lake. And you can help keep it pristine. There is only one organization solely dedicated to keeping Skaneateles Lake clear and pure. The Skaneateles Lake Association.

Our mission is to promote the protection of the water quality of Skaneateles Lake and environmentally sound regional management of its watershed. We offer unique programs, projects, approaches and collaborations that help make that a reality.

## TABLE OF CONTENTS

Message from Our Board of Directors	4-5
Advisory Council and Science Advisors	6-7
Lake Ecology Team	8-9
SLA Overview, Initiatives, and Funding Sources	10-13
Legacy Fund Programs & Expenditures First 5 Years	14-15
Legacy Fund Lake Protection Plan & Costs Next 5 Years	16-17
Legacy Fund Financial Supporters	18-23
Research and Education Boat and Financial Supporters	24-25
Membership Fund Programs	26-27
SLA Members	28-37
SLA 2022 Financial Summary	38
Closing	39



Your support for the SLA Membership  
Fund and Legacy Fund makes  
programs & projects possible that keep  
Skaneateles Lake *clear and pure*.



# A Message from **OUR BOARD**

Dear SLA Supporters,

*Thank you for all you do for Skaneateles Lake.*

We are pleased to share this Special Report detailing continuing efforts to protect and preserve Skaneateles Lake. The threats to our clear and pure lake have grown substantially, but progress to address them has grown exponentially.

We are more encouraged than ever about the future of the lake and its watershed communities. The annually renewed support received for both the SLA Membership Fund and the SLA Legacy Fund is what makes this progress possible.

Skaneateles Lake is seen by many as a crystal-clear pristine jewel among the Finger Lakes. Recognized as one of the clearest and purest lakes in the nation, it is one of only a small handful of water bodies in the U.S. that is so clear that it provides **unfiltered drinking water** to over 200,000 people in the City of Syracuse and other surrounding communities. But the pristine status of our lake is under siege as never before with an unprecedented myriad of threats compromising the water quality of the lake, including:

- HABs (Harmful Algal Blooms) from increasing storm runoff and nutrient pollution
- HABs from increasing lake water temperatures
- HABs from invasive Hemlock Woolly Adelgid infestation killing the vital hemlock forests in the watershed causing soil erosion and increasing tributary water temperatures
- HABs from both agricultural and residential nutrient loading
- HABs intensified by invasive species such as zebra & quagga mussels, Eurasian watermilfoil, and others





Skaneateles Lake provides *unfiltered* drinking water to over *200,000 people* in the City of Syracuse and surrounding communities.



Please continue renewing your annual dues/donations to the **SLA Membership Fund** which has provided most of the support for fighting invasive species through the Milfoil Control Project since 2007, and Watercraft Stewardship/Inspection at the boat launches since 2012.

In addition, give generously to the **SLA Legacy Fund** (est. 2018) which has become so essential to sponsoring science-driven decision making, community outreach/education, and improving our watershed infrastructure in combating Harmful Algal Blooms.

Protecting Skaneateles Lake for the long term will require watershed-wide collaboration and a personal commitment from everyone who loves the lake. We know our community and the entire Central NY region is ready and willing to face this challenge. Your Skaneateles Lake Association is poised to help lead the way with your continued strong support. Thank you again for your continued commitment to Skaneateles Lake!

Sincerely,

The SLA Board of Directors

**Paul F. Torrissi, MD**  
President  
Co-Chair Legacy Fund

**Buzz Roberts, MD**  
Vice President  
Co-Chair Lake Ecology Team

**Richard D. Hole, Esq.**  
Treasurer  
Chair Finance Committee  
Chair Inter-Municipal Relations

**David Allyn**

**William Dean, PhD**  
Co-Chair Lake Ecology Team

**Bill Hecht**

**Jed Delmonico**

**J.D. Delmonico, MBA**

**Robert DeWitt**

**Charles Driscoll, PhD**

**Fran Rotunno Fish, RN, MS**  
Chair Membership Fund  
Co-Chair Legacy Fund

**Joe Grasso, MILR**

**Dana Hall, PhD**  
Chair Watershed  
Improvement Projects

**Brian Harkins, MBA**

**Deborah M. Hole, MLS**

**Elizabeth Liddy, PhD**

**Robert Liegel, Esq.**

**Neil Murphy, PhD**

**Patricia Orr**

**Kim Persse**

**Peter Plumley, PhD**

**Kate Ryan**

**James Tifft, MD**  
Chair Community Outreach &  
Education

**Frank Moses**  
Executive Director



Harmful Algal Blooms (HABs) indicate environmental changes *not only in the water but on land*, particularly runoff containing excess phosphorus and nitrogen nutrients.

## SLA ADVISORY COUNCIL

The Advisory Council is comprised primarily of community members whose role is to advise the SLA Board on a variety of issues related to protecting Skaneateles Lake and its watershed.

**Eric Allyn**

Community Leader

**Deborah Bobbett**

Well Balanced Studio Co-Owner

**Dave Birchenough**

Member of SLA Legacy Fund  
Appeal Committee

**John Cohlan**

Margaritaville, Inc. CEO

**Mac Cummings**

Terakeet CEO & Reputation.com  
Chairman

**Ben Eberhardt**

MidLakes Navigation Director of  
Operations

**Michael Hearn**

Genesee Capital Advisors

**Linda LeMura, PhD**

LeMoyne College President

**Joanie Mahoney**

SUNY-ESF President

**Dave Matthews, PhD**

Upstate Freshwater Institute  
Executive Director

**Mike McMahan**

SLWAP Board Chairman  
& Agribusiness Leader

**Jessica Millman**

Soderberg Charitable  
Foundation Executive Director

**Jerry Morrissey**

Finger Lakes Realty Partners

**Andy Robinson**

Newhouse School of  
Communications (retired)

**Sam Rowser**

OnPoint for College  
Executive Director

**Maureen Soderberg, MD**

Community Leader

**Simon Solomon**

CNY Land Trust  
Executive Director

**Paul Torrisi, Jr.**

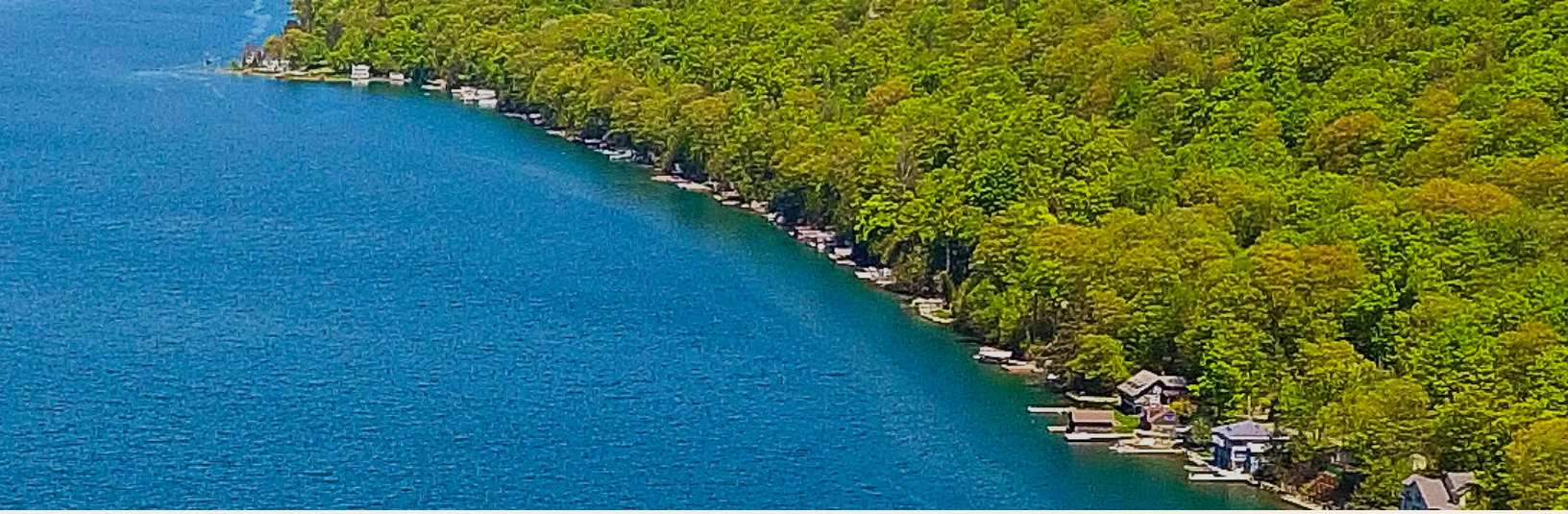
Morgan Stanley Armory Group  
Senior VP

**Jim Tuozzolo**

Pyramid Companies Partner

**Andy Zepp**

Finger Lakes Land Trust  
Executive Director



## SLA COUNCIL OF SCIENCE ADVISORS

Helping to promote science driven solutions.

**Bill Dean, PhD**

SLA Board Member & Lake Ecology Team  
Co-Chair

**Buzz Roberts, MD**

SLA Board VP & Lake Ecology Team  
Co-Chair

**Dana Hall, PhD**

SLA Board Member & Watershed  
Improvement Projects Sub-committee  
Chair

**Charley Driscoll, PhD**

SLA Board Member  
& Syracuse University Professor

**Neil Murphy, PhD**

SLA Board Member  
& SUNY-ESF Professor

**Jim Tift, MD**

SLA Board Member

**Paul Torrisi, MD**

SLA Board President

**Bahram Salehi, PhD**

SUNY-ESF - Salehi GeoLab Professor

**Chris Scholz, PhD**

Syracuse University Professor of  
Paleolimnology and Rift Basin Evolution

**David Matthews, PhD**

9E Plan Modeling Team Member &  
Upstate Freshwater Institute Director

**Greg Boyer, PhD**

SUNY-ESF Professor of Chemistry

**Donald Leopold, PhD**

SUNY-ESF Restoration Science Center  
Co-Director

**Aimee Clinkhammer**

Watershed Coordinator at NYSDEC  
Finger Lakes Water Hub

**Frank Moses**

SLA Executive Director

# SLA LAKE ECOLOGY TEAM

Key Stakeholders, government and NGOs alike, working together toward a common goal.

## SLA BOARD MEMBERS & STAFF

**Bill Dean, PhD**

SLA Board Member & Lake Ecology Team Co-Chair

**Buzz Roberts, MD**

SLA Board VP & Lake Ecology Team Co-Chair

**Dana Hall, PhD**

SLA Board Member & Watershed Improvement Projects Sub-committee Chair

**JD Delmonico**

SLA Board Member

**Bob DeWitt**

SLA Board Member & Town of Niles Planning Board Chair

**Charley Driscoll, PhD**

SLA Board Member & Syracuse University Professor

**Fran Fish**

SLA Board Member

**Joe Grasso**

SLA Board Secretary

**Rich Hole**

SLA Board Treasurer

**Neil Murphy, PhD**

SLA Board Member & SUNY-ESF Professor

**Kim Persse**

SLA Board Member & Village of Skaneateles Environmental Advisory Committee Chair

**Jim Tift, MD**

SLA Board Member

**Paul Torrisi, MD**

SLA Board President

**Frank Moses**

SLA Executive Director

## ELECTED OFFICIALS

**Hon. Janet Aaron**

Town of Skaneateles Supervisor

**Hon. Mary Sennett**

Village of Skaneateles Mayor

**Hon. Joan Jayne**

Town of Niles Supervisor

**Hon. Louis Martin**

Town of Scott Supervisor

**Hon. Chris Kozub**

Town of Spafford Supervisor

**Hon. Ben Walsh**

City of Syracuse Mayor

**Hon. Julie Abbott**

Onondaga County District 6 Legislator

**Hon. John Lemondes**

NYS Legislator for Assembly District 126

**Hon. Jeff Gallahan**

NYS Legislator for Assembly District 131

**Hon. Rachel May**

NYS Senator for Senate District 48

**Hon. Lea Webb**

NYS Senator for Senate District 52

**Hon. Brandon Williams**

22nd US Congressional District Representative



*The Harmful Algal Bloom (HAB) seen around our lake from 2017 Lakewide Bloom. HABs caused by excess nitrogen and phosphorus threaten drinking water purity, recreational use, tourism and property values.*



# SLA LAKE ECOLOGY TEAM

## GOVERNMENT REPRESENTATIVES

### **Jim Greenfield**

Town of Skaneateles Deputy Supervisor

### **Aimee Clinkhammer**

New York State Department of Environmental Conservation  
Finger Lakes Hub Watershed Coordinator

### **Rich Abbott**

City of Syracuse Water Department Watershed Quality Coordinator

### **Greg Loh**

City of Syracuse Chief Policy Officer

### **Mike Plochocki**

Onondaga County Director of Water Quality Initiatives

### **Mark Burger**

Onondaga County Soil & Water Conservation District Executive Director & Skaneateles Lake Watershed Agricultural Program Manager

### **Doug Kierst**

Cayuga County Soil & Water Conservation District - Executive Director

### **Kathy McGrath**

Cortland County Soil & Water Conservations District - Water Quality Specialist

## WATERSHED ADVISORS AND CONSULTANTS

### **Aaron McKeon**

CNY Regional Planning & Development Board - Program Manager

### **Max Heitner**

Finger Lakes Land Trust Director of Conservation

### **Simon Solomon**

CNY Land Trust - Executive Director

### **Olivia Green**

The Nature Conservancy - Finger Lakes Water Quality Specialist

### **Camille Marcotte**

Cornell Cooperative Extension Water & Ecology Educator

### **Brandeis Neveldine**

SUNY-ESF Restoration Science Center - Development & Program Leader

### **Sam Quinn**

SUNY-ESF Restoration Science Center - Research Assistant & Instructor

### **Bahram Salehi, PhD**

SUNY-ESF - Salehi GeoLab Professor

### **Chris Scholz, PhD**

Syracuse University Professor of Paleolimnology and Rift Basin Evolution

### **Richard Wiles**

Environmental Consultant

### **Brian Madigan**

Environmental Consultant

### **Mike McMahon**

EZ Acres Farm Owner

### **Tim Johnson**

Anchor QEA Partner & Principal Scientist

### **Liz Moran**

9E Plan Consultant for Ramboll via EcoLogic

### **Tony Eallonardo, PhD**

9E Plan Modeling Team Member & Ramboll Technical Manager

### **David Matthews, PhD**

9E Plan Modeling Team Member & Upstate Freshwater Institute Director

### **Aimee Clinkhammer**

Watershed Coordinator at NYSDEC Finger Lakes Water Hub

### **Rob Bellinger**

Water Technologist Consultant

GET TO KNOW THE...

## Skaneateles Lake Association (SLA)

# CLEAR LAKE. PURE WATER.

Since 2007, SLA has conducted *the most robust, continuous effort* of milfoil control in the Finger Lakes.

Let's get a minor point of confusion out of the way. Here is what we are not. The Skaneateles Lake Association is not a traditional lake association comprised of lake front property owners. That couldn't be further from the truth. We represent anyone and everyone that has an interest in a clear and pure Skaneateles Lake and deliver innovative programs, projects, approaches and collaborations that help make that a reality.

### THE VERY REAL THREATS FACING SKANEATELES LAKE

Skaneateles Lake is seen by many as a crystal clear, pristine jewel among the Finger Lakes. Recognized as one of the cleanest and clearest lakes in the nation, Skaneateles is one of a small handful of water bodies in the U.S. that is so clean that it provides unfiltered drinking water to a metropolitan community. But the pristine status of our lake is under siege as never before with an unprecedented myriad of threats compromising the ecology and long-term quality of the lake, including among others:

- Harmful algal blooms
- Hydrilla invasion threat
- Unabated storm runoff
- Watershed flora threats
- Eurasian watermilfoil proliferation
- Soil erosion & lake siltation
- Increased nutrient pollution
- Faulty septic & pollution sources

While the challenges are complex, what we do is very straightforward. The SLA pursues projects, research, programs and communications that help to either eliminate or mitigate these risks. Whatever is in the best interests of the lake is a top priority for the SLA.



EURASIAN  
WATERMILFOIL



HARMFUL  
ALGAL BLOOMS



HEMLOCK  
WOOLLY ADELGID



SOIL EROSION/  
LAKE SILTATION

# How SLA Initiatives Are Funded

## FUNDING SOURCES

## PROGRAMS & ACTIVITIES

### Membership Fund

#### Invasive Species: Milfoil Control

- Milfoil Removal Program

#### Aquatic Invasive Species Prevention

- Watercraft Launch Stewardship

### Legacy Fund

#### Watershed Improvement Projects

- Stream Improvement Projects
- Runoff & Erosion HOA Projects
- Hemlock Forest Protection Program
- Grant Seed Funding Projects
- Partnering with ESF-Restoration Science Center

#### Research & Monitoring

- Harmful Algal Bloom Monitoring & Response
- Stream Monitoring
- In-Lake Monitoring
- Watershed Monitoring

#### Community Education & Outreach

- Emerging Watershed Scientists Program
- Lake Friendly Living Program
- ESF-Restoration Science Center Community Education
- Community Forums

#### Research & Education Boat - The BOB

- Milfoil-Macrophyte Surveying
- ESF Satellite Learning - Water Clarity Project
- SU Lake Sediment Core Sampling
- Harmful Algal Bloom Monitoring
- Citizen Statewide Lake Assessment Program
- On The Water Education Program

**SLA LEGACY FUND:**

*Investing In A Clear, Pure Future*

# YOUR LAKE. YOUR LEGACY. OUR MISSION.



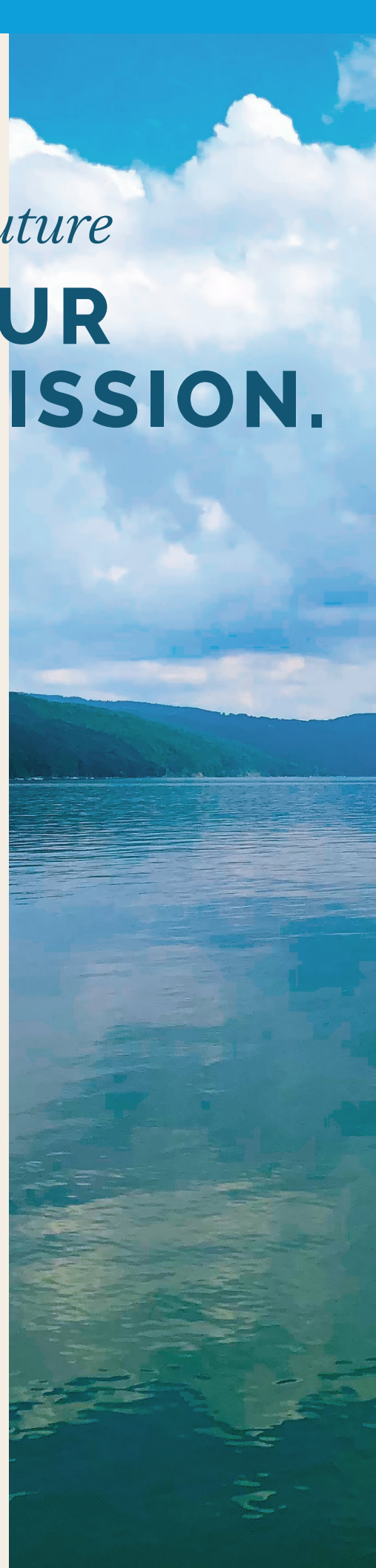
## **AN INVESTMENT IN THE FUTURE OF OUR LAKE**

The SLA Legacy Fund was established in 2018 in response to the 2017 crisis of a lake-wide Harmful Algal Bloom (HAB) that turned the entire lake green with the potential for producing harmful toxins to both animals and humans. This crisis prompted development of SLA's Harmful Algal Bloom Response Plan. The four pillars of the plan focus on:

- Lake Ecology Team
- Education & Community Outreach
- Establishing Watershed Wide Governance
- Fund Development For Watershed Improvement Projects

The SLA Legacy Fund Lake Protection Plan is focused on directly addressing many of the greatest threats to the quality of our lake and funds the people, projects and progress that will keep Skaneateles Lake amongst the cleanest in the country. These plans fall into three primary categories of Watershed Improvement Projects, Research & Monitoring and Community Outreach & Education.

In the case of Skaneateles Lake, an ounce of prevention can be worth millions and millions of dollars and avert long-term irreversible damage to the ecosystem. An investment in the SLA Legacy Fund offers a multiplying effect that can deliver more than an ounce of prevention.



“So, how do we prevent blooms? The only thing we can do is nutrients. This is why there is a big focus on preventing nutrients from coming into the lake.”

- Dr. Greg Boyer, SUNY ESF

**SLA LEGACY FUND  
LAKE PROTECTION  
PLAN:**

**1**

Watershed  
Improvement  
Projects

**2**

Research &  
Monitoring

**3**

Community  
Outreach &  
Education

## SLA LEGACY FUND EXPENDITURES AT WORK

# \$828,018

## *First 5 Years*

2018 - 2023

# \$390,459

## WATERSHED IMPROVEMENT PROJECTS

## *Projects Designed to Fight Algal Blooms*

- Projects aimed at reducing excess nutrients from entering Skaneateles Lake
- Stormwater runoff protection buffer projects working with landowners, community partners, and scout groups
- Ditch improvement project with shared private road community and Soil & Water Conservation District
- Support of expertise from engineering consultants at Anchor QEA in development of improvement project program
- Dowling Creek Stream Stabilization Project with US Fish & Wildlife Service, the Nature Conservancy, SUNY ESF, Anchor QEA Engineers, and SCC
- Upper Willow Creek water control structure and detention basin improvement with local landowner and Anchor QEA Engineers
- Lower Willow Creek Sediment Reduction project leveraging SLA Legacy Fund investment with landowner and grant support from Great Lakes Commission Program
- Leveraging survey and project design support for additional investment from Onondaga County for shared private road community lake protection project
- Protection of Hemlock Trees in ravines and steep shorelines to help retain soil from washing into lake



*Capturing sediment and stabilizing Willow Creek at key locations while Leveraging Legacy Fund Investments with landowner cost-sharing, in-kind services from businesses like Brillo Excavation, and garnering federal dollars through the Great Lakes Commission. Willow Creek was given high priority due to its location being south of one of the City of Syracuse's drinking water intake pipes combined with a history of sediment loading and small algal blooms at the mouth of the stream.*

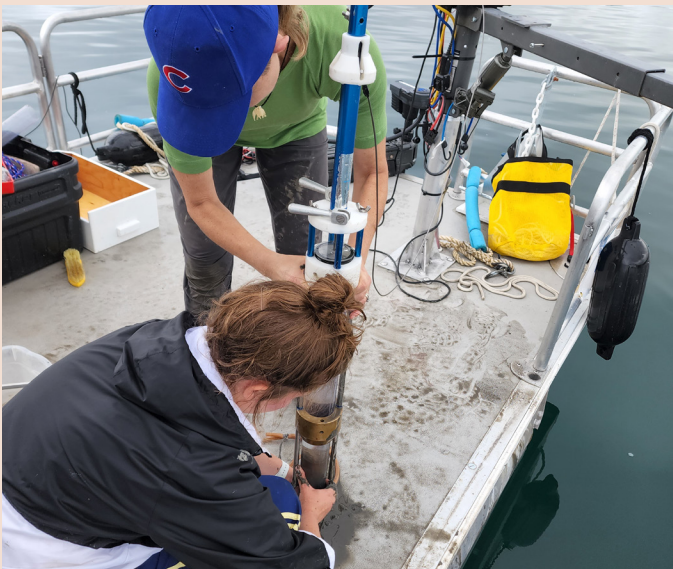
↑ *SLA's inaugural collaborative Watershed Improvement Project, Dowling Creek, included The Nature Conservancy, who provided staff to develop initial designs with the US Fish & Wildlife; Anchor QEA Engineers, who helped finalize designs; SUNY-ESF, who provided expertise and plants to enhance the stream habitat; and the site host, the Skaneateles Country Club who, along with SLA, provided staff and financial support for the project.*

**\$362,270**

**RESEARCH & MONITORING**

## *Data Driving Decisions in Lake Protection*

- Funded stream analysis by Upstate Freshwater Institute used to establish Nine Element Plan
- Syracuse University (SU) stream analysis
- SU Precipitation & associated nutrient loading studies
- SU lake bottom sediment sampling
- Bloom Optix Drone studies on stream nutrient loading
- SUNY ESF Satellite Artificial Intelligence and Machine Learning for measurement of lake clarity
- SUNY ESF eDNA studies in sourcing of nutrient in stormwater and watercourses
- Supporting boat pilot to facilitate on lake research



**\$75,289**

**COMMUNITY OUTREACH  
& EDUCATION**

## *Inspiring and Empowering Lake Stewardship*



*Skaneateles Lake Emerging Watershed Scientists - City of Syracuse students learn about drinking water stewardship as Anchor QEA Principal Tim Johnson showcases engineering and design of watershed improvement projects as a solution for improving water quality.*

- Skaneateles Lake Emerging Watershed Scientists
- Lake Friendly Living initiative
- Landowner consultation
- Community education presentations
- Landscaping Workshops



*Lake bottom sediment core sampling research by SU supported by SLA Legacy Fund to better understand nutrients feeding Harmful Algal Blooms.*

## SLA LEGACY FUND AT WORK

# 5 Year Lake Protection Plan

2023-2027

# \$2,750,000

## WATERSHED IMPROVEMENT PROJECTS

### *Projects Designed to Fight Algal Blooms*

SLA's watershed improvement action plan for 2023 is budgeted just under \$300K, but will continue to be an area of increased investment for years to come.

The plan will cover core lake protection programs including:

- 2 main improvement projects in 2023 with increase in capacity to take on more projects
- Grants for shared private road communities enhancing watercourses
- Continuation of Hemlock tree protection
- Investment into ESF's Restoration Science Center land stewardship
- Establishment of a maintenance fund to subsidize landowner cost to ensure lake protection project integrity over time

With an increase of watershed wide planning, surmounting threats from more intense rain events, the need to sustain improvement project integrity, and identification of more problem areas requiring solutions in nutrient reduction and resilience, SLA will be garnering with the community \$2.75 million to invest back into the lake and its watershed over the next 5 years.

# \$350,000

## RESEARCH & MONITORING

### *Data Driving Decisions in Lake Protection*

Investments in research will continue to:

- Support science that aids in prioritizing projects that help reduce nutrient loading and maintain integrity of aquatic life.
- Evaluate the effectiveness of programs & projects
- Pilot studies on emerging technologies and strategies designed for lake protection
- Continued research in support of monitoring:
  - in-lake water quality
  - stream stability
  - watershed integrity, and
  - impact from invasive species

NYS DEC, SUNY-ESF, Syracuse University, Finger Lakes Institute and other academic institutions and research groups with input from science advisors will be at the forefront.



## GOAL

# \$4,000,000

## \$600,000

### COMMUNITY OUTREACH & EDUCATION

## *Inspiring and Empowering Lake Stewardship*

SLA is targeting an investment of \$500,000 over the next 5 years to grow our community outreach & education initiatives. Activities and programs will include, but are not limited to:

- Advancement of the Skaneateles Lake Emerging Watershed Scientists (SLEWS) program to connect students with ongoing research and associated careers in water protection
- Development of a digital guide to Lake Friendly Living with continued workshops and impact events
- Bolstering of lake protection awareness campaigns and education lecture and forums
- Support of communications and engagement with Executive Director and Community Engagement Coordinator
- Investment in community education through ESF Restoration Science Center programs

SLA's community engagement plan for 2023 alone with investment in SLEWS, Lake Friendly Living, ESF Restoration Science Center, Dr. Robert Werner Research & Education efforts, staffing, and additional initiatives totals over \$100,000.

## \$300,000

### CAPITAL RESERVE FUND

## *Investing in Lake Protection Hardware*

Establishing a reserve for capital costs through SLA's Legacy Fund will allow for responsible growth to maintain and replace critical equipment necessary for lake protection operations.

SLA anticipates the need for a \$300K fund over 5 years to support the following capital improvements:

- Maintenance and equipment upgrades for the Robert Werner Research & Education Boat - "The Bob"
- Upkeep and motor and pontoon replacements for Milfoil Control Vessels
- New purchase and repair and maintenance of Milfoil Control Benthic Matting
- Upkeep of Milfoil Control Diving Equipment
- Purchase and maintenance of watercraft decontamination infrastructure to help prevent invasive species
- Purchase and upkeep of watershed improvement project infrastructure
- Support for lake monitoring research equipment

# SLA LEGACY FUND

## *Investors*

2018 - 2023  
DONATIONS & PLEDGES

We extend our deep appreciation to each of our donors who have joined with us in all of our efforts to help prevent future Harmful Algal Blooms and keep our Lake clear and our Lake water pure.

### *Founders*

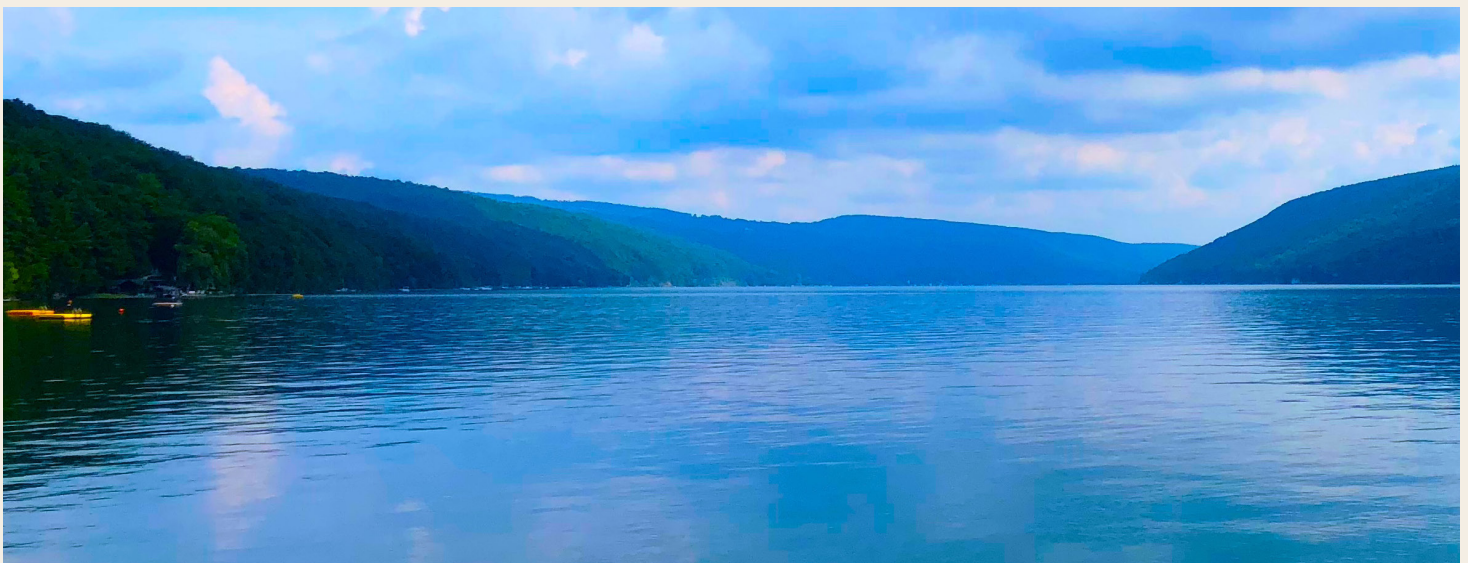
*2018 - 2023 cumulative giving of more than \$100,000*

Allyn Family Foundation  
Jonathan & Louisa Cohlan  
Maclaren & Rochelle Cummings  
Patrick & Jessica Danial  
Michael J & Noreen R Falcone & Family  
John & Kimberly Mezzalingua  
Steven & Jacquelyn Miron  
James Pulaski  
Peter & Elsa Soderberg  
Peer & Maureen Soderberg

### *Leaders*

*2018 - 2023 cumulative giving of \$25,000 to \$99,999*

Edward & Deborah Brennan  
Mark & Mara Charlamb  
Craig & Barbara Froelich  
Christopher & Amy Neumann  
Robert & Sally Neumann  
Sara Recktenwald  
Robert & Lynne Scheer  
Gary & Virginia Shanley  
Jennifer Sutherland



“Water links us to our neighbor in a way more profound and complex than any other.”

- John Thorson



## *Benefactors*

*2018 - 2023 cumulative giving of \$5,000 to \$24,999*

Anonymous

David & Amy Allyn\*

Lew & Dawn Allyn\*

Mark & Allison Allyn\*

Walter Benson & Katherine Cogswell

David Birchenough & Carrie Lazarus

Mary Cotter

Sid Devorsetz

William & Barbara Dean

Edward & Margaret Dienst

Dwight W. Winkelman Foundation

Holland Gregg & Patience Brewster

Finger Lakes Realty Partners  
(Jerry & Kathleen Morrissey)

Hamilton & Fran Rotunno Fish

Joseph & Marie Grasso

Dana & Susan Hall

Joseph & Mary Ellen Hennigan

Richard & Deborah Hole

Bruce & Linda Kenan

Darlene Kerr

Max & Agnes Kunz

Paul & Kathy Leone

John MacAllister & Laurel Moranz

John & Elizabeth McKinnell

Gardner & Lynn McLean

Mid Lakes Navigation (In-Kind)

Jim & Julie Moore

David Muir

Thomas, Camille & Ashley Potter

William & Gretchen Roberts

Dan & Linda Roche

Angelo & Margaret Scopelianos

James & Deborah Tiftt

Paul & Mary Torrisi

Salli & James Tuozzolo

John Walsh

*\*indicates additional donation made via  
Allyn Family Foundation*

## SLA LEGACY FUND - INVESTORS

### *Friends*

*2018 - 2023 cumulative giving  
of up to \$4,999*

Julie Abbott

Douglas Allis

Eric Allyn & Meg O'Connell\*

William Allyn\*

Robert & Barbara Amsler

Roland & Tacie Anderson

Anonymous

Anonymous

Anonymous

Anonymous

Armstrong Family

Sandra Attleson

George & Sharon Azzam

James & Catherine Baranello

John & Maureen Baringer

Edward & Sharon Barno

Annette Becker

Gwen Birchenough

Mark & Leokadia Bitz

Paul & Karen Black

Donald & Jane Blake

Kenneth & Marjorie Blanchard

Wendy Blewett

Edward & Mary Blum

James & Julie Boeheim

Carlile & Barbara Bolton-Smith

Michael Boudreau & Julie Stafford

James & Cynthia Bright

Virginia Bryce

Bryce Family Foundation

David & Mary Bundy

Richard & Joyce Campbell

Jeffrey & Mary Beth Carlberg

Colin & Carrie Carroll

Cayuga Tree Service

Peggy Chase

Steven Clymer & Brenda Sannes

Paul & Linda Cohen

William & Martha Cole

Columbian Foundation

Ellen Compton

Stephen & Alexandra Congel

Laurie Cottrell

Bill & Jane Cummings

William & Nicole Cummings

David & Lynne Curtin

Susan Dailey

John & Patricia Dale



Erika Davis  
Peter & Colleen Dean  
William & Deborah DeLaney  
Jed & Barbara Delmonico  
JD & Mary Delmonico  
Patrick & Emma Delmonico  
Delmonico Insurance Agency  
Michael & Diane Dolcemascolo  
Jane Downs  
Patrick Doyle & Elizabeth Downes  
Gregory & Michelle Drumm  
David Duggan & Lynn Cleary  
Nancy Easter  
Barbara Egtvedt  
F. J. Estlinbaum Barge & Crane  
Elizabeth Etoll  
Lois Exner  
Anne Fairbanks  
Floreck Family  
Gianfranco & Johanna Frittelli  
Christine Fry  
William & Kimberly Gilberti  
Goetzmann Family  
Michael & Kathleen Gorr  
David Graham  
James & Emily Gregg  
Hanley Family  
Brian & Maureen Harkins  
Robert & Martha Harris  
John Havemeyer  
Mark Heffernan

Daniel Hennigan  
James & Ann Higbee  
Ann Hinchliff  
David Honold  
Jayne Howard  
Robert & Claire Howard  
Robert & Marcia Hunt  
Kenneth Hyde & Nellie Ramsden  
Catherine Kane  
Kathryn, Max & Isabella Karpinski  
Mary Jacqueline Keady  
Chris & Lynn Kelly  
Margaret Kelly  
Daniel & Virginia Kenney  
David & Sherill Ketchum  
Jeffrey Kirshner & Lorraine Rapp  
Konrad Family  
Robert (Chris), Karen & Georgia Kreidler  
Judith Krieger  
Kris-Tech Wire Co, Inc.  
W. Theodore & Joan Kuck  
Gary & Lucinda Kuhns  
Kevin La Grow  
Benjamin Lavery & Maura Swan  
James Leonard & Patricia O'Shaughnessy  
Liz Liddy  
Joann Loftus  
Thuan & Allison Loi  
Eloise Luchsinger  
Robert & Elizabeth Legg Madden  
Mandana Barn (Tim & Heather Carroll)

## SLA LEGACY FUND - INVESTORS

### *Friends -continued* *2018 - 2023 cumulative giving* *of up to \$4,999*

Nancy Marquardt

Todd & Jill Marshall

William Mayo

William & Patricia McAvoy

Joseph McCaffrey & Jacqueline K. Bays

David & Norma McCarthy

William & Cynthia McCauley

John McDevitt & Helen Tai

Edward & Charlene McGraw

Lindsay McMillan

Victoria Meyer

Daniel & Kathleen Mezzalingua

James Miller

Dave & Paula Miller

Toby & Jessica Millman

Robert Moses

Randall Mott

Lynsa Mura

Neil & Joanne Murphy

Nancy Murray

Michael Murray Memorial Donations

Kevin Nichols

Mr. & Mrs. Richard Nicklas

Town of Niles

North End Outdoors  
(Jeff & Debbie Bobbett)

Sean & Laura O'Keefe

Patricia Orr

John Osborne

John & Sharon Paddock

Joseph & Debra Paduda

Lawrence Palmieri

John & Lynda Parsons

Peter & Ann Paullin

Nancy Peck

Jason & Kim Persse

Joseph Howard Phillips

Paul & Danielle Pimpinella

Michael Plochocki & Family

Alex & Carol Protasiewicz

Patrick Riccardi

Joseph & Lynne Romano

Christopher & Amy Rudolph

Daniel & Linda Scaia

Anne Hurley Scholl

Mark & Misty Schwab

Robert & Timothy Scott & Kathleen Gentile

Mary Sennett

Carol Shannon

David Sheppard

Stephen Shope

Christopher Short & Abigail Duggan

Ryan Sidebottom & Natasha Ginzburg

Nicholas & Cynthia Signorelli

Keith & Helen Simonelli

Skaneateles Garden Club

Skaneateles Sailing Club

Skaneateles Town Square  
(Jeffrey & Kate Youle)

Skaneateles Winding Way Association  
Slottje Family  
James & Susan Solomon  
Steven & Sharon Songer  
William & Molly Spalding  
Edward Spencer  
Joseph & Robin Steencken  
LaDorna Stephens  
Martha Stephens  
Warren Stoddard  
Jeffrey Stregiel  
Walter & Kathleen Sullivan  
John & Anne Sveen  
Ben & Kathleen Tarantino  
Bruce & Patricia Texiera  
Nancy Tiedemann  
Laurie Timmons  
Paul & Meredith Torrisi

Daniel & Susan Troup  
Mary Tucker  
Thomas & Leah Valenti  
James Vitikus  
Tom & Maureen Walsh  
Robert Warfield, Jr.  
Wegmans Food Markets, Inc.  
Robert & Jo Werner  
Peter White & Mary Socci  
White & White Antiques, Inc.  
(Steve & Bev White)  
David & Marilee Williams  
Patricia Woodcock  
Jonathan Woodcock  
Warren & Susan Wulff  
Michael & Vanessa Yates  
John & Carol Young  
*\*indicates additional donation made via  
Allyn Family Foundation*

*Skaneateles Lake is the only natural 'sole source'*  
for unfiltered municipal drinking water in NYS.



## *The Dr. Robert Werner*

# RESEARCH AND EDUCATION BOAT

For many years, the Skaneateles Lake Association's (SLA) esteemed Board Member and Lake Ecologist, Dr. Robert Werner, (Bob) had conducted lake surveys, water sampling and other studies using his own pontoon boat in supporting the SLA's efforts to protect Skaneateles Lake. While he was often assisted by other Board Members and colleagues, he carried out much of the work alone on his own boat. In 2019, Dr. Werner advised his fellow Board Members that he was no longer going to be able to conduct the lake surveys and be available to conduct the other sampling and studies he had conducted.

The SLA Board recognized that we were going to need to acquire our own boat in order to be able to continue to do all the work that Dr. Werner had done for years and even more including educational programs for youth and adults. It was immediately decided that the boat would be named for Dr. Werner.

An initial concept for the boat was developed and drawings of the concept were made. We were pleased to be able to share the concept, renderings, and proposed name for the boat before Bob passed. His comment on seeing the plans was brief ... "this will be good".

The Board had already started to reach out to community members for donations to build and equip the boat. After Dr. Werner's passing, donations in his honor and donations specifically for the boat poured in from friends, family, colleagues and many community members.



*Special thanks to SLA volunteers Bill Dean and John Menapace for designing and fabricating this sophisticated research/education vessel which will serve our lake and watershed region for many years to come!*



The Dr. Robert Werner Research & Education Boat, affectionately known and secondarily, named “The Bob”, was commissioned into action at the Skaneateles Country Club on June 27, 2022 and was only made possible by the generosity of all of the following:

David & Amy Allyn	Greenville LLC	Steven Phillippy & Janice Kemp Phillippy
Anonymous	Holland Gregg & Patience Brewster	Shirley Powers
Anonymous	Amy Lynn Gregory	Floramay Racz
Henry & Helga Beck	John David Hammond	N. Sondor & Kristy Racz
Dessa Bergen	Brian & Maureen Harkins	Yvonne Racz
David Birchenough & Carrie Lazarus	Kenneth & Barbara Hearst	William & Gretchen Roberts
Wendy Blewett	Donna Himmelfarb	Andy & Kitty Robinson
Brinson Marine	Richard & Deborah Hole	Daniel & Linda Roche
Virginia Bryce	Robert & Claire Howard	Scott Rogers
Laura Busby	Peter & Jane Hueber	Michael Schrader & Lauren Kochian
Jeffrey & Marybeth Carlberg	Jackie Keady	Sevey's Boatyard
Delores Chappell	David & Sheril Ketchum	Skaneateles Country Club
Aimee Clinkhammer	Edward & Lena Kochian	Skaneateles Sailboat Shop
Paul & Linda Cohen	Richard & Mary Kokosa	Steve & Sharon Songer
The Columbian Foundation	Dorothy Krause	Wolfram & Elena Stahl
Stephen Congel	Judith Krieger	Mr. & Mrs. Robert A. Stevens
Suzanne Congel	Lakeview Auto & Marine (Bob, Terri & Rachel DeWitt)	Gene & Joan Tarolli
Jim & Sharon Cross	Carolyn Legg	Nancy Tiedemann
Robert & Roberta Culbertson	Brian & Jean Madigan	James & Deborah Tifft
Jeffrey & Barbara Culhane	Mary Marshall	Paul & Mary Torrisi
William & Barbara Dean	Kevin & Fran McCormack	Larry & Katherine Weiss
Merrill & Paula Denslow	Mercury Motor Company	Philip & Ashley Wesson
Sid & Suzanne Devorsetz	Jim & Julie Moore	Joe & Shasta White
Charles & Kimberly Driscoll	Judith Morrissey	Randall & Paula White & Frank Canastrano
Ham & Fran Rotunno Fish	Frank Moses	Charles Williams
Ronald & Rose Ann Gay	Patricia Orr	Lucy Williams
Sheila Goetzmann	Michael Paciorek	Marilyn Wurzburger
David Graham	Lawrence & Nan Pardee	

## SLA MEMBERSHIP FUND

### *Programs*

The SLA Membership Fund is our primary funding source to support on-going prevention and remediation efforts to combat invasive species. SLA implements a Eurasian watermilfoil (*Myriophyllum spicatum*) control program on Skaneateles Lake that has now reduced that species coverage to a level only requiring “maintenance” control.



*Milfoil Control work boat with matting on board.  
Photo courtesy of Ty Denslow.*

*Patch of Eurasian Watermilfoil on Skaneateles Lake*



*AIS Prevention and Milfoil Control yearly costs are close to \$250,000 and primarily supported by annual membership funds.*

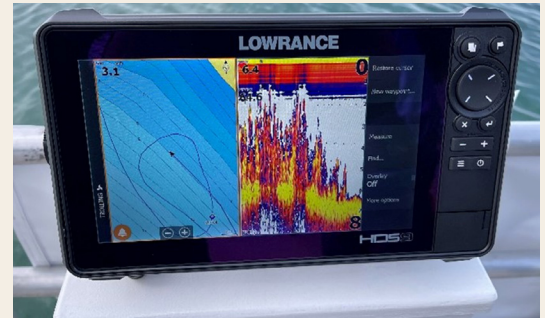


# Milfoil Control Operations in 2022

Over 6 acres of matting designed to reduce Milfoil populations was strategically deployed by John Menapace and Aquatic Invasives, Inc. using sonar survey information collected by SLA.



*Aboard “The Bob” - (Dr. Robert Werner Research & Education Boat) - SLA Board Members, Dr. Bill Dean, Co-Chair of Lake Ecology Team; Dr. Paul Torrissi, President; Dr. Buzz Roberts, VP, Lake Ecology Team Co-Chair, and volunteer Director of Watercraft Stewardship program since 2012, conducting a Milfoil Survey.*



*Side-scan Sonar imaging with Milfoil signature.*

# Aquatic Invasive Species Prevention with Watercraft Steward Program



*Our neighbor, Cayuga Lake is both home to Hydrilla and the #1 source of boaters coming to Skaneateles Lake.*



*SLA Watercraft Steward Jim MacLachlan surveys incoming boats to protect Skaneateles Lake from any new threats of invasive species like Hydrilla.*



*L to R - City of Syracuse Mayor Ben Walsh with head SLA Boat Steward Marty Minet and Sr. Steward Roy Truswell. City of Syracuse continues to be a partner leveraging SLA membership funds in support of preventing new invasive species from entering Skaneateles Lake.*

# Skaneateles Lake Association

## MEMBERS

Just as clear, pure water is the lifeblood of Skaneateles Lake and the Skaneateles community, membership is the lifeblood of the Skaneateles Lake Association. A strong membership supports innovative and dynamic projects & programs that can help us all to achieve lasting results. We'd like to thank our Members which include individuals, families, businesses, and organizations.

### MEMBER LIST - JANUARY, 1 2022 - MARCH 31, 2023

Janet Aaron	Anonymous 73	James & Catherine Baranello	Anonymous 43
Mark & Diane Aberi	Curt & Susan Andersson	John & Maureen Baringer	Paul & Karen Black
Peter & Sharon Andrus	Armstrong Family	Edward & Sharon Barno	Walter H. Blackler
Paul Alciati	Michael & Kelly Arroyo	Bartlett Tree Experts	Patricia Blackwell
Richard Alciati	Linda Merrill Arthur	Anonymous 70	Donald & Jane Blake
David & Amy Allyn	Aster Weddings & Events (Shannon Pratten)	Ronald Beavers & Karen Lewis	Susan Blakney
Lew & Dawn Allyn	George & Charlene Atkinson	Henry & Helga Beck	Scott & Madeleine Blanchard
Mark & Allison Allyn	Sandra Attleson	Annette Becker & Family	Kenneth & Marjorie Blanchard
William Allyn	Joseph & Deborah Augustine	Robert & Jodi Bellinger	Blewett Family
Eric Allyn & Margaret O'Connell	George & Sharon Azzam	Andrea Belusko	Bluewater Grill
Nicole Way Allyn	Donald Babcock & Caroline Kaye	Matt & Gina Benedict	Anonymous 78
Allyn Family Foundation	Anonymous 8	Benevity Community Impact Fund	Bobbett Family
Dawn Altmeyer	Mary Ellen Banazek	Walter Benson & Katherine Cogswell	Casmir Bobowski
Amber Well Drilling & Water Systems	Christine Banke & Melinda Carney	William & Dessa Bergen	Christoper Bodell & Alicia Tsai
Anonymous 62	Robert & Lisa Banuski	Berkshire Hathaway CNY Realty (Mary MacKaig)	Orville & Diane Boden
Bill & Susan Anderson		Thomas Bersani & Joan Christy	James & Julie Boenheim
Roland & Tacie Anderson		Dave Birchenough & Carrie Lazarus	Jeffrey & Kristine Bogart
		Margaret Bisgrove	Connie Bohrer
		Lee & Karen Bishop	Robert & Carina Bone
			Joseph Bongiovanni & Heather Lane
			Michael & Margaret Bongiovanni
			Anonymous 61

Due to the unfiltered Skaneateles Lake water supply, the City of Syracuse enjoys some of the **lowest water rates** in New York State and the nation.





Anonymous 79	David & Mary Bundy	Lee Casler	Kip & Becky Coerper
Ayham & Gillizn Boucher	Lance & Patty Burghardt	Christina Castle	Coffin Corner (Sarah Fitzgerald & Patricia Coffin)
Bouquet Holstein PLCC (Jeff & Cate Davis)	Phil & Kathy Byrne	Jane Cate	Paul & Linda Cohen
William & Julie Bourke	Joseph Calipari	Cayuga Tree Service (Christopher & Marianne Sandstrom)	John & Louisa Cohan
Jack & Katherine Boyce	Mark & Janet Calipari	Peter & Danielle Cerimeili	Larry Cole & Terry Askey-Cole
Greg Boyer	Robert & Jane Calkins	Paul & Joy Chamandy	Martha Cole
Mary Bradly	Brian & Romy Callahan	Anonymous 80	Ira Coleman & Debra Hurley
Dan & Judy Bragg	John & Elet Callahan	ChaseDesign	C. J. Collins
Anonymous 57	Anonymos 52	Chestnut Cottage	Columbian Foundation
Edward & Deborah Brennan	Joan Callaway	Elizabeth Christopher	Comer Family
Jim & Cindy Bright	Jeff & Caitlin Campbell	Paul & Maria Christou	Joseph & Katherine Compagni
Brinson's Marine Group	Richard & Joyce Campbell	David Churchill & Judy Sweet	Adam & Sarah Compton
George Bristol & Barbara Kay	Kenneth Cannon & Joanne Viggiano	Michael & Pamela Ciarla	Ellen Compton
Jonathan Brodock & Beecher Graham	Anonymous 83	Jim & Sharon Cirincione	Compton Family
Marilyn Brothers	Anonymous 82	Kimball Clark	Suzanne Congel
Dillon & Katie Brown	Patti Carey	Anonymous 38	David & Ruth Conley
Gerald Brown	Jeffrey & Marybeth Carlberg	Philip Clayton & Colleen Plimpton	Richard & Alison Conley
Kay Bruening	Kathryn Carlson	Anonymous 89	Patrick & Deborah Connolly
Marilyn Isler Brunger	Colin Carroll	Steven Clymer & Brenda Sannes	Barbara Connor
Virginia Bryce	Blake & Brittney Carter	Alan & Joan Coates	Bill & Pat Conole
Anne Buehler	Anonymous 74	Bill & Betty Cochran	Nancy Coon
Taber & Sara Buhl	Brian & Roni Carvalho		
	Burt Carver		

## SKANEATELES LAKE ASSOCIATION MEMBERS

Walter & Lucy Copeland	Robert Daubenspeck	Tim & Julie DiBagio	Forrest & Sara Earl
Patricia Coppe	Richard Dausman & Amy Tormey	David Dickinson	Guy & Nancy Easter
Bob & Jane Corcoran	Jamie Davis	Dickman Farms	Patricia Eastman
Michael & Carol Corcoran	Peter & Danette Davis	Greenhouse & Garden Center	Ecoscape Design
Mary Cotter	William & Donna Davis	Ed & Maggie Dienst	Elizabeth Edinger
Anita Cottrell	Meagen Dean	Fouad & Michael Dietz	Edinger Family Lakehouse
Laurie Cottrell	Peter & Colleen Dean	Michael Dillon	D. W. & Marilyn Edington
Dan & Kathy Coughlin	Philip Dean	Joseph Dimento & Deborah Newquist	Eggleston & Krenzer Architects, Inc.
John Coughlin	Robert Dean & Virginia Calvert	Anthony & Suzanne DiNicola	Barbara Egtvedt
Michael Coughlin & Gretchen Geiger	William & Barbara Dean	Ronald & Janet Dippold	Carey Eidel
Paul & Gail Cowley	Anonymous 31	Michael & Diane Dolcemascolo	Lorne & Gale Elder
Dana & Dorothy Coye	JD & Mary Delmonico	Kevin Donnelly	Scott & Teri Elia
Jim & Sharon Cross	Jed & Barbara Delmonico	Donohue Family Fund	Gregg & Meryl Eriksen
Robert & Rebecca Culbertson	Joel & Chris Delmonico	Anonymous 18	FJ Estlinbaum Barge & Crane
Bill & Jane Cummings	Matthew Delmonico	Vincent Dopulos & Christine Larsen	Elizabeth Etoll
Maclaren & Rochelle Cummings	Patrick & Emma Delmonico	Gary Dower	Richard & Barbara Evans
Brian & Christine Cunningham	Sean & Deanna Delmonico	Jane Downs	George & Mary Anne Drew-Evans
Jim & Ceme Curley	Delmonico Insurance Agency	Judy Doyle	Lois Exner
David & Lynne Curtin	Ralph DeMasi & Susan Scheuerman	Patrick Doyle & Elizabeth Downes	Anonymous 37
Susan Dailey	Merril & Paula Denslow	Mark Drastal	Robert & Kathryn Fagliarone
John & Patricia Dale	John & Cynthia Desko	Charles & Kimberley Driscoll	Fair Haven Enterprises Partnership (Kathleen Hudson)
Devin & Angela Daly	Sidney Devorsetz	Anonymous 19	Anne Fairbanks
Patrick & Jessica Danial	Scott & Bethany DeWolf	David Duggan & Lynn Cleary	Michael & Nicole Falcone
Steve Datz & Rachel Harms	Nicholas Diakow & Renee Laffer	Vic & Debbie Duniec	Michael & Noreen Falcone
		Barbara Durr	Patrick Fall & Margaret Clooney
		Ellen Dusault	Paul & Patricia Fallon
		Brad & Hannah Dusto	Anonymous 24
		Diane Dwire	Farchione Family
		David Dzielak	
		Thomas & Shirley Eagan	



“For many of us, clean water is so plentiful and readily available that we rarely, if ever, *pause to consider what life would be like without it.*”

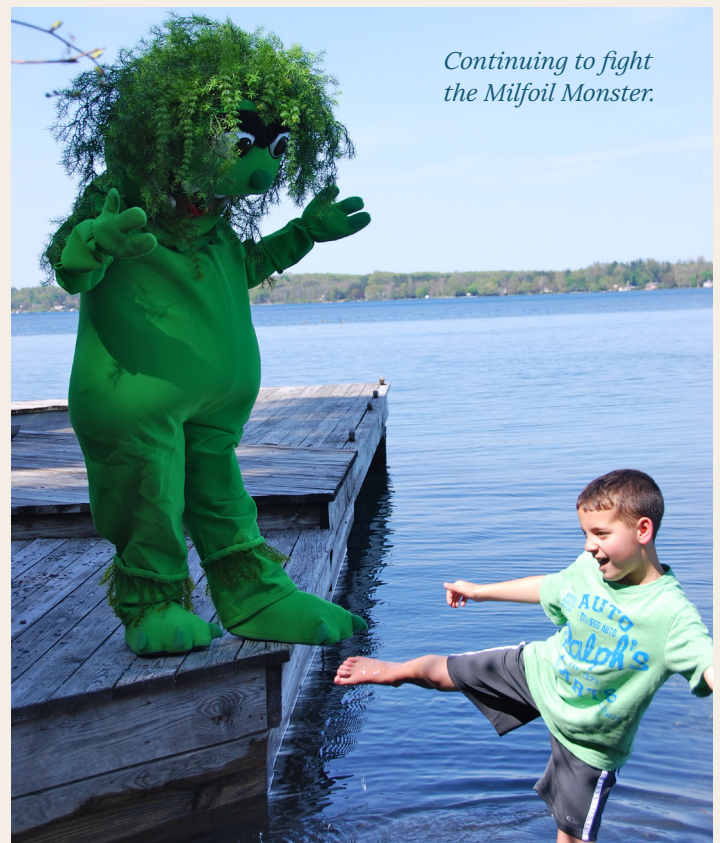
- Marcus Samuelsson

- |   |                                  |   |                                      |
|---|----------------------------------|---|--------------------------------------|
| Rick & Cathy Fedrizzi                                     | Jay & Karen FitzGerald           | Mary Gardner                                | Garard & Francine Grannell           |
| Holden & Karen Fenner                                     | Paul & Erika Fiutak              | Polly Gardner & Family                      | Joseph & Marie Grasso                |
| Douglas B. & Carol Brewer Fenton                          | Robert Flannery                  | Paul Garrett                                | James & Emily Gregg                  |
| Gerald & Ann Ferro  | Tom & Carol Fletcher             | Adam Gasiorowski & Claudia Kosty            | Holly Gregg & Patience Brewster      |
| Douglas & Jessica Fetterman                               | Ben Fliegel & Radhika Dewan      | Dan Gastin & Annette Otis                   | Gregory Family                       |
| Chris & Caitlin Fields                                    | Floreck Families                 | Marjorie Gavin                              | Robert Gregory                       |
| Dave Figura & Laura Downs                                 | Eleanor Follett                  | Eric Gebhard & Michelle Palenscar           | Lance & Margaret Greve               |
| Thomas Filicia  | Ray & Kimberly Forbes            | Kyle & Liz Gebhart                          | Celeste Gudas                        |
| Anonymous 81  | Steven Ford & Patricia Lynn-Ford | Wolfgang & Amandy Geihe                     | Lorraine Gudas                       |
| Bob & Beth Filiczkowski                                   | Diane Forney                     | Anthony & Linda Geiss                       | Sandra Hadley                        |
| Finger Lakes Chapter ACBS                                 | James & Mary Fox                 | Alex & Donna Giambartolomei                 | Neb & Florie Hage                    |
| Finger Lakes Mechanical Sales & Service (Mike Foote)      | Eugene & Tracy Franchini         | Charles & Jacqueline Giancola               | Hagen Family                         |
| Finger Lakes Realty Partners (Jerry & Kathleen Morrissey) | Donald & Janet Frank             | Stephen Giglio                              | Alan & Laurie Hahl                   |
| Fingerlakes Luxury Homes                                  | Anonymous 46                     | J Gilbane, III & Jeffrey M Towsey           | Richard & Lesia Haines               |
| Seth Fischer  | Gianfranco & Johanna Frittelli   | William & Kimberly Gilberti                 | Clayton & Patricia Hale              |
| Hamilton & Fran Rotunno Fish                              | Craig & Barbara Froelich         | Mary Giroux                                 | Dana & Susan Hall                    |
| Daniel Fisher & Lori Ruhlman                              | Christine Fry                    | William & Marybeth Gleason                  | Michael Hall                         |
|   | Anonymous 68                     | Glen Cove LLC                               | Ryan Hall                            |
|   | Kent & Linda Fuchs               | Joseph & Diana Goethe                       | Douglas & Pamela Hamlin              |
|   | Richard & Sarah Furlow           | Goetzmann Framily                           | Allen Handelman & Barbara Cote       |
|   | Joseph & Mary Gaffney            | Goffe Cottage (Jack Moore & Gretchen Goffe) | Thomas & Jane Hanley                 |
|   | Robert & Louise Ganley           | Kevin & Sarah Goode                         | John & Kathy Hardy                   |
|   |                                  | Michael & Kathleen Gorr                     | Janice Hardy                         |
|   |                                  | Nancy Graham                                | Brian & Maureen Harkins              |
|   |                                  | Schuyler & Karen Graham                     | Martin & Rosemary Harms              |
|   |                                  | David Graham                                | Rich & Sheila Haswell                |
|   |                                  |   | John Havemeyer                       |
|   |                                  |   | Cheryl Hawkins                       |
|   |                                  |   | David & Elizabeth Hayes & Anne Tracy |
|   |                                  |   | Kenneth & Barbara Hearst             |



## SKANEATELES LAKE ASSOCIATION MEMBERS

Bill & Lucienne Hecht	Peter & Jane Hueber	Emmett & Nicole Kelly	Lee Klosowski & Susanne Guske
Anonymous 54	Dorothea Hughes	Margaret Kelly	Mary Knepper & Susan Mark
Edward & Janet Heinrich	Robert & Marcia Hunt	Kelly Family	Michael Knoll & Lauren Steinfeld
James Helmer & Kathryn Pasqua	Richard Hurley	Bruce & Linda Kenan	Albert Knorr & Monica Bunkenburg Knorr
Sheila Hemami	David & Ursula Hutton	Gregory Kenien & Mary Ellen Faughnan	Edward & Lena Kochian
David & Karen Hempson	Kenneth & Jeanne Hutton	Ginger Kenney	George & Dawn Kocsis
Daniel Hennigan	Kenneth Hyde & Nellie Ramsden	Darlene Kerr	Mary Kokosa
Joe & Mary Ellen Hennigan	Bill & Patricia Innerst	David & Sherill Ketchum	Trevor & Emily Kolego
Richard & Joyce Herlihy	Peter Isler & Miriam Torres Brinkmann	Harry Kettmer & Martha Kendrick	John & Wendy Kopley
Hertig Family	Jim & Daisy Jacobs	Ann Kilian	Kay Kraatz
Jim & Patty Hertz	Robert & Catherine Jamieson	Robert Kiltz	Richard & Shelly Kraetz
Terry Cerquone Herzing	Joan Jayne	Christopher & Laura Kinder	James & Kimball Kraus
Eric & Leslie Heyer	Thomas & Gretchen Jeffers	Ted Kinder	Dorothy Krause
Gary & Merrily Heyer	Anonymous 71	Edward Kirk	David & Alexa Krauter
Philip & Judy Hider	Jermy Family	Jeffrey Kirshner & Lorraine Rapp	Eric & Megan Krauter
Andrew & Alison Hider	James & Emily Johnson	Brian & Leisyl Kleinberg	Allan & Marion Krauter
James & Ann Higbee	Tim Johnson	Jordan & Olga Kligerman	Michael Krebs
Higgins Harbour Family	Chris Johnson & Jean Shook	Julia & Lori Klock	Chris & Karen Kreidler
Donna Himelfarb	Scott & Jolie Johnston		Jennifer Kreischer
John Moss & Robin Hinchcliff	David & Beverly Jones		
Gary & Deborah Hind	Robin & Joyce Jowaisas		
Kyle Hobart	Joseph Judge & Sheila Myers		
Hobbit Hollow Farms	Francis & Lauren Kaduc		
Donna Hogan	Catherine Kane		
Sarah Holben	David Kanter & Stacy Metcalf		
Thomas & Sandra Holbrook	Kathryn, Max & Isabella Karpinski		
Richard & Deborah Hole	Mary Jacqueline Keady		
Bob Honold	Anonymous 80		
David Honold	Timothy Kelley		
Neal & Alice Houser			
Jayne Howard			
Robert & Claire Howard			



*Continuing to fight the Milfoil Monster.*



John & Lynn Kreischer	Lynn Lehihan	Bob & Betsey Legg Madden	William & Patricia McAvoy
Judith Krieger	James Leonard & Patricia O'Shaughnessy	Brian & Jean Madigan	Joseph McCaffrey & Jacqueline K. Bays
Kris Tech Wire	Anonymous 15	Anonymous 63	David & Norma McCarthy
Christopher & Fadia Kruse	Robert & Betty Liegel	Robert & Diane Maguire	Kevin & Kathryn McCarty
Theodore & Joan Kuck	Lions Club of Skaneateles	Bill & Miki Mahood	William & Cynthia McCauley
Gary Kuhns	Susan Littlehales	Charles Major	Steven & Stacey McClintic
Mark & Ellen Kulik	Littlefoot & Franklin Fund	Michael Major	Kevin & Frances McCormack
Max & Agnes Kunz	The Local Branch	Mandana Barn (Tim & Heather Carroll)	Margot McCormick
Raymond & Donna Kurlak	Cecelia Lockwood	John & Irene Manna	John McDevitt & Helen Tai
Wayne & Sue LaFrance	Locust Lane Association	Chris Mandel & Kenneth & Catherine Maum	McDowell Family
Daniel & Grace Labeille	Joann Loftus	John & Peggy Manring	Brenden McGinn & Rebecca Cohen
Stephen Laffer	Joseph Logan	Justin A Marchuska II	Edward & Charlene McGraw
Kevin & Kathy LaGrow	Thuan & Allison Loi	David, Kristen & Mavenek Marks	Ben & Kayc McHone
Lake Country Construction & Contour (James & Kimberly Tracy)	Dennis & Ashby Longwell	Melissa Marquardt	Thomas & Lynne McKeown
Lake & Village Realty LLC (Michael Williams & Johan Visser)	M. F. Loose	Nancy Marquardt	John & Elizabeth McKinnell
Lakeview Auto & Marine (Bob, Terry & Rachael DeWiltt)	Roy & Carolyn Lootens	William & Bridget Marquardt	Paul & Jennifer McKinnell
Don & Jill Lang	Eric Lorberfeld & Elizabeth Friedmann	John & Candace Marsellus	James & Dianne McLaughlin
Marvin & Patti Langley	Gard & K. C. Lorey	Mary Marshall	Gardner & Lynn McLean
David & Joyce Larrison	Gary & Mary Jane Lowery	Todd & Jill Marshall	James McLennan
Bob & Chris Latella	Eloise Luchsinger	Ross Martin & Dr. Deborah Blazey-Martin	David & Meloney McMurry
Steven & Hilde Lauber	Lucky Dogs	Fred & Virginia Marty	Anonymous 53
Benjamin Lavery & Maura Swan	James & Ellen Lutz	Mehdi & Kathie Marvasti	John & Frances McNerney
Linda Lavery	Christopher & Monica Lynch	Ed Marx & Sherry Nichols	Mark & Teresa McSwain
Lee Properties	Anne Lynn	Sam & Sally Mason	Matthew & Elaine Medwid
William & Margaret Lee	Martin & Tara Lynn	Rodney & Andree Mastrosimone	
Anonymous 50	M & T Bank	Barry N. Maturevitz	
Mark & Lisa Leesman	John MacAllister & Laurel Moranz	Bill & Jennifer Mayo	
Chris Legg & Nancy Thomas	Clifford MacBroom & Lucille Solana	Richard Mazzeo	
	Jim & Wendy MacLachlan		

## SKANEATELES LAKE ASSOCIATION MEMBERS

Larry & Lynne Meeske	Steve Mott	Sean & Laura O'Keefe	John & Pam Pidhirny
Adam Meinstein & Odile Gelinard	David Muir	Charles O'Neil & Carolyn Legg	Gino & Susan Pietromonica
Anonymous 11	Sandra Mulconry	Patricia Orr	Paul & Danielle Pimpinella
John & Mary Menapace	Anne Munly	Joe Orsen & Jennifer Coughlin	Chris & Cathy Pinckney
Greenville LLC	Cornelius & Joanne Murphy	Bill Osborne & Anne McArdle	Pine Bluff Homeowners Association
Alan & Joyce Methelis	Dennis Murphy	John & Elizabeth O'Sullivan	The Pines
Richard & Victoria Meyer	Eileen Murphy	Richard & Anita O'Toole	Anonymous 48
Daniel & Kathleen Mezzalingua	Michael Murphy	Mark Overdyk & Joanie Mahoney	David Pittard
John & Kimberly Mezzalingua	William & Anna Murphy	John & Sharon Paddock	Don & Maureen Plath
Michael DeRosa Exchange (Michael DeRosa & Kelly Ide)	Muscari Family Partnership	Joseph & Deborah Paduda	Trevor Plath
Andrew Middleton	Steve & Jen Musso	Daniel & Eva Pajak	Anonymous 77
Mid Lakes Navigation	Kim A Myers	Gregg & Ashley Palmer	Julie Plochocki & Family
Dave & Paula Miller	Dr. & Mrs. David G. Nangle	Larry Palmieri	Daniel & Diane Pluff
James Miller	Anna Nelson	Jeff & Cheryl Palomaki	Peter & Diane Plumley
Mary Ellen Miller	Michael & Eileen Nelson	David & Jan Panasci	Bud & Kathleen Poliquin
Toby & Jessica Millman	Christopher & Amy Neumann	Larry & Nan Pardee	Ray & Barb Poole
Jim & Lori Milne	Robert & Sara Neumann	Michael & Carol Parker	Mont & Kate Pooley
Larry & Marty Minet	New Hope View Farm	Thomas & Brenda Parkes	Nina Popow
Steve & Jackie Miron	George & Jill Newton	George & Sherry Parsons	Mark & Theresa Potenza
Scott Moe & Jennifer Tuozzolo	Robert Nichols & Katherine Sullivan	John & Lynda Parsons	Timothy & Linda Potter
Nigel & Christine Moll	Dr. & Mrs. R William Nichols, Jr.	Peter & Ann Paullin	Thomas & Camille Potter
Caroline Moore	Richard & Alexandra Nicklas	Jordan & Melissa Pavlus	Tracy Prentice & Jill Austin
James & Julie Moore	David & Shannon Nierenberg	Anonymous 49	John Priest & Lynne Boles
Steven & Noreen Moore	Michael & Josn Niswender	Judith Pearsall	Alex & Carol Protasiewicz
W. Brewster Morris	Lenny Nocilly	Pennisi/Kelly Family	Mihael & Kimberly Puc
Jerry & Kathleen Morrissey	Sharon O'Connell	Pennock Pines, Inc.	James Pulaski
Mary Morrissey	Anonymous 66	Jason & Kim Persse	John & Helen Purcell
Richard Morse & Claudine Labeille	Pat & Cathy O'Connor	Joseph A. Phillips	Steven Purcell
Randall Mott	Michael & Pamela Odum	Todd & Molly Phillips	Jerry & Alice Purdy
			Barry & Amy Quinn
			Ian & Kary Raddant

- Jack & Linda Rade
- Raziur Rahman
- Thomas & Lisa Rainey
- Stephen & Elizabeth Ramsey
- James & Lori Ranalli
- James & Heather Ranalli
- Jack & Sharon Rappaport
- Derek Raymond & Catherine Blacker
- Anonymous 29
- Joseph & Debbie Reagan
- Georgiana Rebhahn
- Sara Reckenwald
- Jack & Patty Reed
- Stig & Inger Rehnmark
- Anonymous 9
- Patrick & Kuni Riccardi
- Tim Riccardi & Mary Swan
- Timothy & Elaine Rice
- Craig & Rhonda Richards
- Elmer Richards & Sons
- James Richardson
- Anonymous 72
- Richard Ridings
- Jack Riley & Karen Yuhas
- Dan & Lisa Riordan
- Forest & Sally Rittgers
- John & Diane Rizzo
- William & Gretchen Roberts
- Jeff Roberts & Carol Lynne Krumhansl
- Judy Robertson
- Andrew & Kitty Robinson
- Dan & Linda Roche
- Karen Roche
- Chad & Kathleen Rogers
- Scott Rogers & Laura Michelman
- Walter Rogers
- Michael Rogus & Teresa Roche
- Randy & Mary Rohrbeck
- Rolands Men's & Boy's Wear
- Joseph & Lynne Romano
- Philip Romano
- Mark Roney
- Richard & Romaine Rood
- John & Laura Rooney
- Barbara Root
- Nicholas & Linda Rossi
- David & Susan Rossi
- Anne Roth
- Thomas & Eileen Roth
- Robert Rotondo
- Arnold & Libby Rubinstein
- Jeff Rudberg & Emily Gaffney
- Rudnick Family
- Lawrence & Janet Ruston
- Ed & Pam Ryan
- Jeff & Carrie Ryan
- M Marlene Ryan
- Travis & Kate Ryan
- Ryu Family
- Eugene & Donna Sabini
- Larry & Tracy Sala
- Mathew & Mary Ellen Salanger
- Joseph & Alisa Salibra
- Elan & Anne Salzhauer
- Gregory & Catherine Sankey
- Adele della Santina
- Richard & Jill Sargent
- Charlie Saxon & Kim Dettor
- Anonymous 75
- Daniel & Linda Scaia
- Tony & Kelly Scalzo
- Anonymous 65
- Scheer Family
- Steven & Kelly Scheinman
- Ruth Schermerhorn
- Paul Schoenhand & Nicole Jantzi
- Anne Hurley Scholl
- Kristopher Scholl
- Christopher & Carrie Scholz
- Daniel & Mildred Schultz
- Carolyn Schwab
- Mark & Misty Schwab
- Angelo & Margaret Scopelianos
- Robert & Timothy Scott & Kathy Gentils
- Joseph & Julie Scuderi
- Douglas & Darcy Sedgwick
- Mary Sennett
- Margaret Sennett
- Aime Seymour
- Alton & Shannon Shader
- Shadowlawn Lakeshore Corporation
- Shady Bend Land Corporation
- Shady Bend Corporation
- Rahul Shah & Kelly Cummings



## SKANEATELES LAKE ASSOCIATION MEMBERS

Gerard & Virginia Shanley	Anonymous 23A	Peter & Elsa Soderberg	James & Kiki Strodel
Carol Shannon	Skaneateles Marina (John Cherundolo)	James & Susan Solomon	Neil & Christine Strodel
Oleg & Anna Shapiro	Skaneateles Psychology Associates	Robert & Betsy Solsky	Kara Strods
Rich & Paula Hardy Sharkey	Skaneateles Rotary Foundation, Inc	Songer Family	Sal & Hope Strods
Liz Sharp	Skaneateles Sailing Club, Inc.	Sons of the American Legion Squad 239	Salvin & Anita Strods
Anonymous 86	Skaneateles Sunrise Rotary Club	434 Spafford Landing LLC	William & Sara Strong
Steven Shehadi	Skaneateles Town Square (Jeffrey & Kate Youle)	John & Barbara Spain	Dan & Mary Pat Suits
John & Susan Shehadi	Skaneateles Volunteer Fire Department	Bill & Molly Spalding	Walter & Kathleen Sullivan
James & Carol Sheldon	Skaneateles Winding Way Association	Curtis & Patrice Spalding	Donald & Chacea Sundman
Philip Shepard	Henry & Jeannie Slauson	Jay Spalding & Irene Gonin	Douglas Sutherland
David Sheppard	Slottje Family	Ted Spencer	Jennifer Sutherland
Sherwood Inn/Bill Eberhardt	Tom & Bettina Smallman	Thomas & Martha Squire	John & Margaret Sutton
Christopher Short & Abigail Duggan	Mona Smart	Carolyn Stafford	John & Anne Sveen
Anonymous 23	Smiles of Skaneateles	Wolfram & Elena Stahl	Anonymous 36
Charles Sieving & Alison Beimler	Bolt & Barbara Bolton-Smith	Jeffrey & Virginia Stannard	John & Desiree Swygert
Nicholas & Cynthia Signorelli	Doug & Bev Smith	Chad & Diane Steckel	Frank & Mary Szczech
Korinne Silverman	Glenn & Jane Melrose Smith	Andrew & Catherine Stephens	John Szczech
Gregory & Maria Simmons	Kevin Smith	LaDorna Stephens	Edward & Christine Szemis
Harvey & Doreen Simmons	Linda M. Smith & Family	Anonymous 59	Thomas & Sherry Sziosek
Keith & Helen Simonelli	Lucinda Smith	John & Nancy Sternfeld	Richard & Joan Tackley
Anonymous 76	Richard & Carolyn Smith	Charles & Pamela Stewart	Ben & Kathleen Tarantino
Kevin & Betsy Sio	Thomas & Susan Smith	Jim Stoddard	Gene & Joan Tarolli
Skaneateles Central School Environmental Club	Blair Soars & Susan Birchenough	Eric Stohrer & Gail Calcagnino	Jim & Dannie Taylor
Skaneateles Country Club	Peer & Maureen Soderberg	William & Carol Stokes-Cawley	John Teixeira Family
Skaneateles Festival		Janet Stokoe & Michael Stokoe	Anonymous 88
Skaneateles Garden Club		David & Patricia Stone	Ten Mile Point South Cottage Homeowners Association
Skaneateles Holdings (Judd Seales)		Mike & Renee Strangeway	Philip & Diane Tennant
			Nancy Testani
			George & Lucille Teufel
			Bruce & Patti Texeira
			Seth & Lynn Thibault

George Thomas & Patty Wiese	Via Mondo Travel & Wellenss (Rosemary Mondo)	Geoffrey & Gina Wickwire	Sara Wingerath-Schlanger
Bruce & Kathryn Thompson	John & Jean Vincent	John & Linda Wickwire	Dwight W. Winkelman Foundation, Inc.
Genevieve Thompson	James & Racquel Vlassis	2673 Widewaters LLC	Lilli & Christy Winkelman
Mya Thompson	Demetra Vounas	Duane & Denise Wiedor	Thomas Wise
Three Birds Properties	Ben & Eleanor Ware	Amy Wiles	Donald & Kendra Witter
Nancy Tiedemann	Robert Warfield & Alison Smith	David & Leanne Willard	Howard Wolhandler & Karen Lawitts
James & Deborah Tifft	Bill & Jen Warning	Charles & Nancy Williams	Patricia Woodcock
Michael & Judith Timmins	Dianne Washington	David & Marilee Williams	Duncan Wormer & Barbara Benedict
Laurie Timmons	Robert Waters & Linda Pietroski	David & Mary Jean Williams	Priscilla Sandford Worrall
Julia Torrisi	Gay Wayne	Robert & Anne Williams	Warren & Susan Wulff
Paul & Meredith Torrisi	John & Susan Weir	Ryan Williams & Linda Ahern	Robert & Leslie Wurzburger
Paul & Mary Torrisi	Lawrence & Katharine Weiss	Mathew & Lisa Wilsey	Mike & Denise Yakutchik
Margaret Tourville	Joshua & Allison Wells	Joseph & Maureen Wilson	Michael & Vanessa Yates
Jacob & Brandy Tracy	Anonymous 78	Window Attire (Diana & Richard O'Brien)	Bruce & Katherine Yenny
Ralph & Patricia Troisi	Jo Werner	Don & Mary Anne Winfield	Gary & Duane Zdan
Anonymous 56	2 West Lake Street (Clark Maher)	Fred & Mary Wingerath	Judy Zdep
Daniel & Susan Troup	Thomas & Judith West	John Steele Wingerath	
Stuart Trust	West Side Lake Association		
Roy & Jackie Truswell	Michael & Lisa Wetzell		
Mary Tucker	David & Heather Wheat		
Carl Tucker	Paula White		
Jaime L Tuozzolo	Peter White & Mary Soggi		
James & Salli Tuozzolo	White & White Antiques (Steve & Bev White)		
Michael Tutor & Susan Keefe	Whitegate Homeowners Association		
Twin Birch Dairy (Dirk & Karen Young)	Douglas & Margaret Whitehouse		
Thomas & Leah Valenti	Andrew Whiting & Roberta Ripberger		
Guido & Nancy van der Ven			
Sara Van Norstrand			
John & Judy Varney			
Vermont Green Mountain Specialty Company			

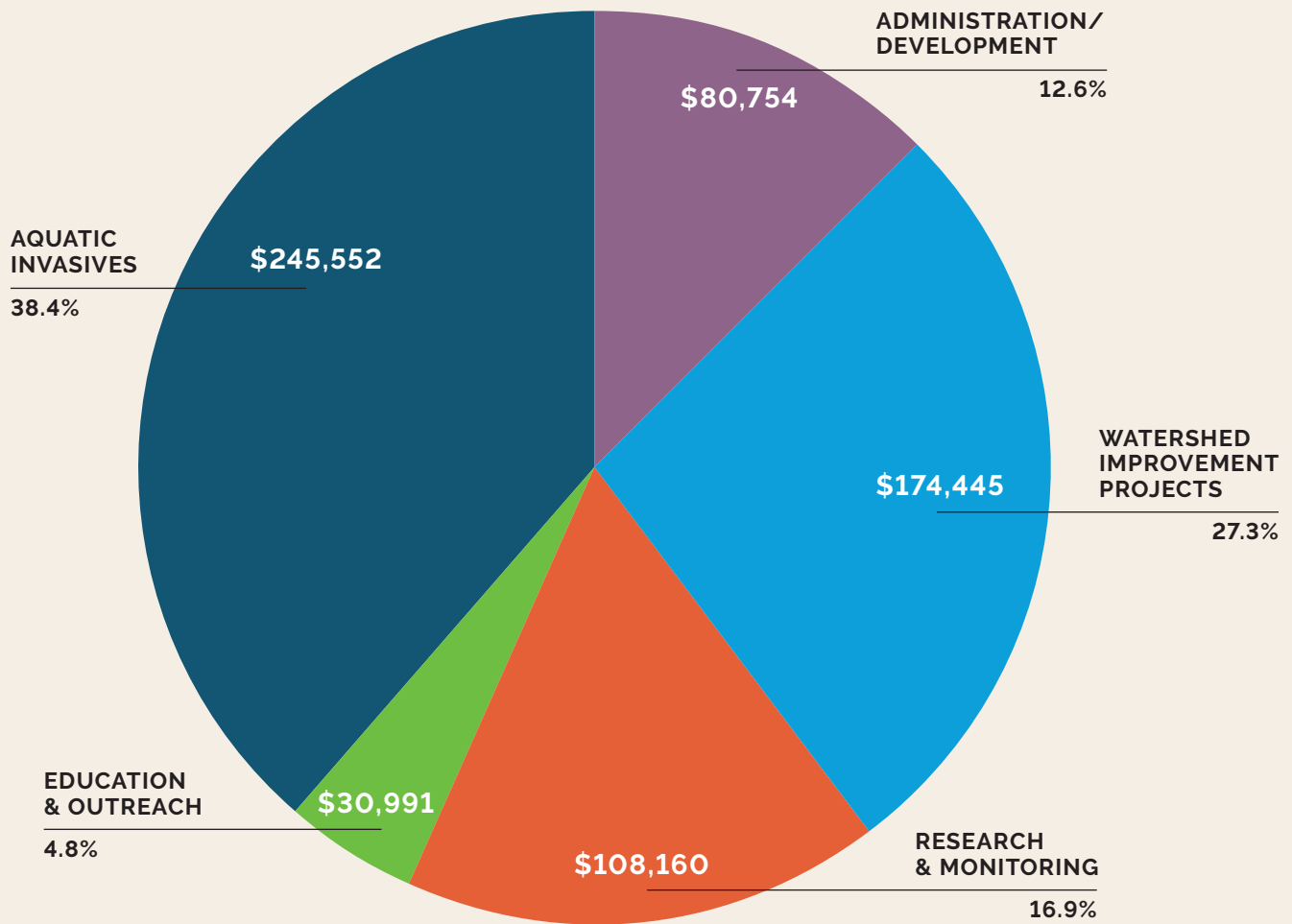
In addition to these members, the Skaneateles Lake Association receives sustaining support from Onondaga County, gratis slips for the Milfoil Team boats from the Skaneateles Marina and a gratis mooring for the Dr. Robert Werner Research & Education Boat from the Skaneateles Country Club.



SLA is supported primarily by the *renewal of annual memberships.*

# SKANEATELES LAKE ASSOCIATION - 2022 MEMBERSHIP & LEGACY FUND EXPENSES

*Combined Total - \$639,902*



87% directly dedicated *toward lake preservation and protection!*



## *It Takes A Team To Keep Our Lake Clear And Pure*

Congratulations! You have reached the exciting conclusion of the first of many SLA special reports detailing our efforts to protect Skaneateles Lake. The SLA Board of Directors shares this 2023 Special Report with you to deliver a detailed understanding of our progress to date, a view of the many challenges ahead and a clear vision for our future efforts.

With your support the SLA is ushering in a new era of breakthrough initiatives that give everyone a role to play at this most critical time for Skaneateles Lake. Supporting SLA through membership and the SLA Legacy Fund is one of the most profound commitments you can make to ensure a clear and pure future for Skaneateles Lake. This investment not only helps to protect and preserve the lake for future generations; it protects the very investments we have all made in the lake in properties and the local community economies.

The clear and pure water of Skaneateles Lake is literally the lifeblood of the Skaneateles community as well as the City of Syracuse and other CNY communities as a drinking water source. Skaneateles Lake is seen by many as the crown jewel among the Finger Lakes. Crystal clear, pristine and pure, one of the last sources of unfiltered drinking water remaining in the nation. It is a haven. It is a recreational gem. It is a natural wonder. It is a lifetime of memories. It is an economic engine. Quite simply, it is worth protecting. The work is before us, we know what needs to be done, join the team and make a smart investment in the future of our lake.

*“It’s the patience factor that always stymies things, because for some reason people can spend fifty years screwing up a lake but expect to be able to fix it in a couple of years. **It just isn’t the way it happens.**”*

– David Schindler (1940-2021), American/Canadian Ecologist, University of Alberta





JUMP IN AND JOIN

[skaneateleslake.org](http://skaneateleslake.org)

**SA**  
SKANEATELES  
LAKE ASSOCIATION  
CLEAR LAKE. PURE WATER.